

Who left the *tracks*?

Tracking tunnels are a great way to discover what lives in your back yard

you will need:

- A3 size white card
- plastic lid
- stapler
- 1 tissue
- 1 teaspoon food colouring, mix with 2 teaspoons water
- 1 teaspoon peanut butter

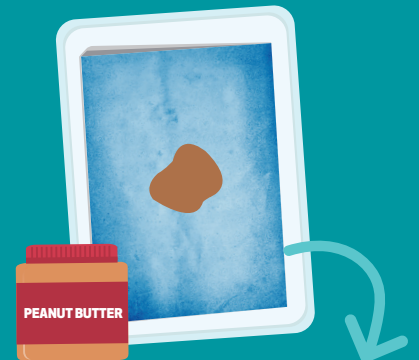


1 fold card to width of plastic lid

2 fold up the sides and staple the top together

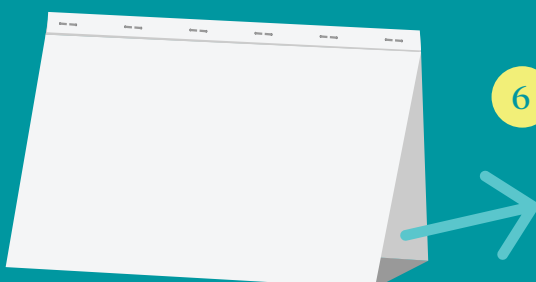
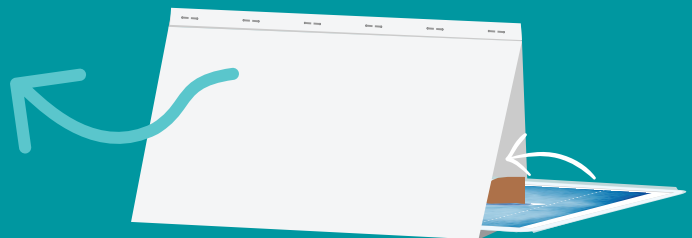


3 fold tissue to fit the plastic lid. Pour food colouring/water mix onto tissue until it's soggy



4 put peanut butter in middle of tissue

5 put your tracking tunnel in a sheltered spot in your garden and leave overnight



6 check you tunnel the next morning to discover who left the tracks

Check out the *animals* that may leave tracks in your *tracking tunnel!*

