

myZOO



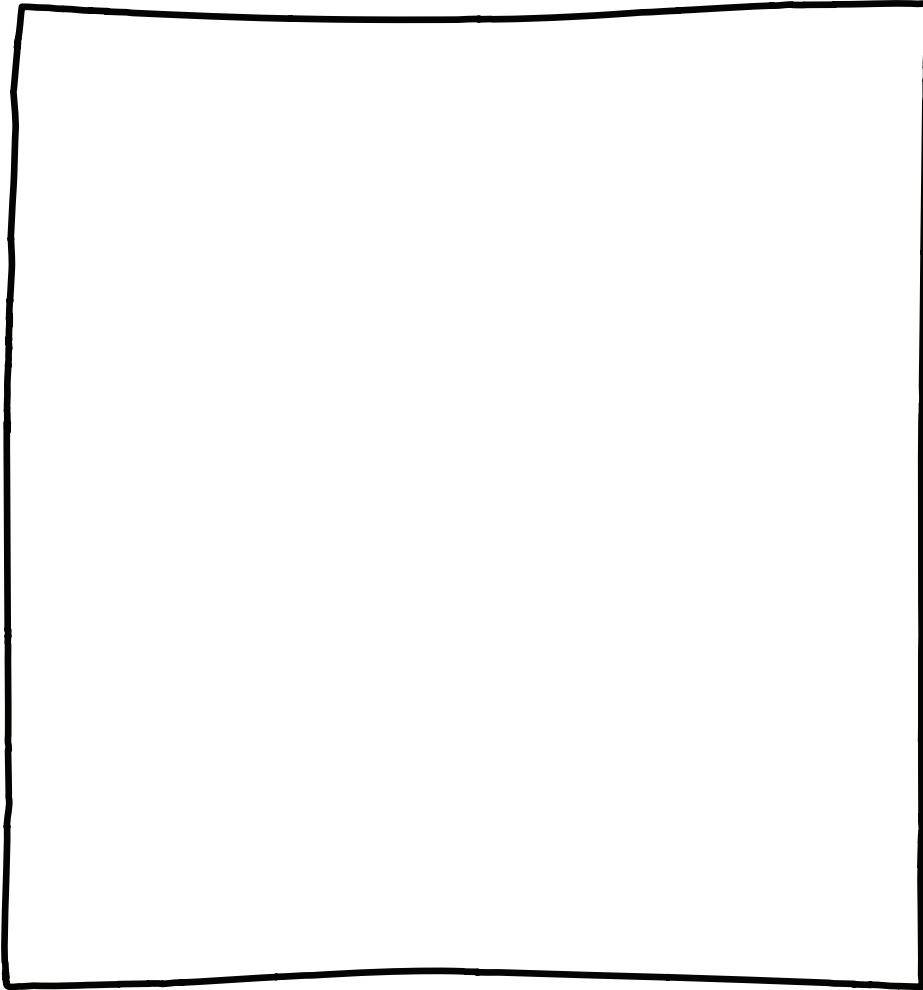
COTTON TOP
TAMARIN
POSTER INSIDE!

Auckland
ZOO

This book belongs to

My favourite animal is

Draw it below

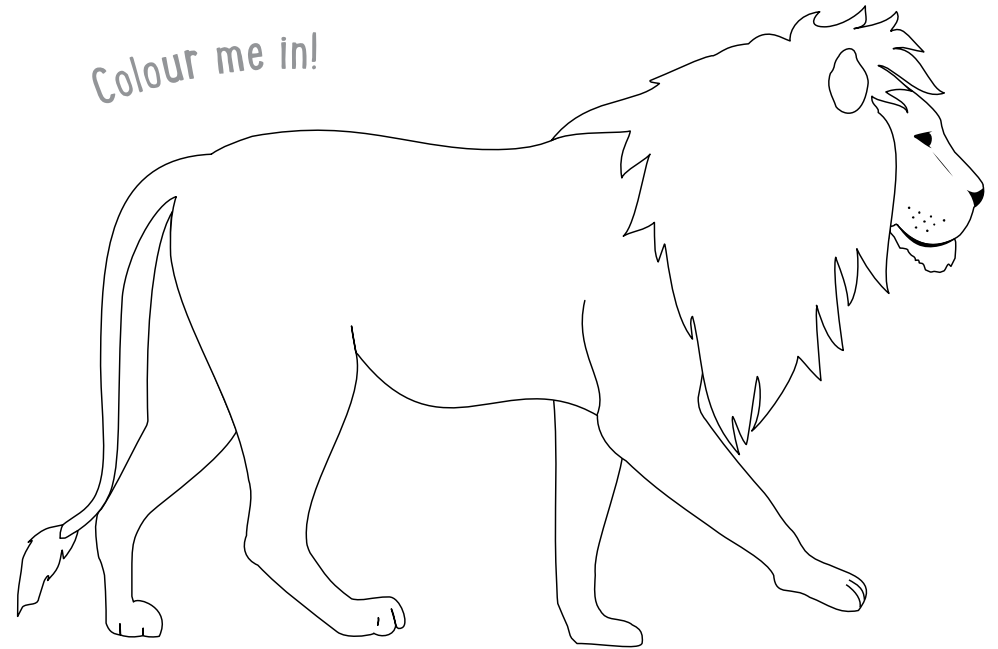


I am _____ years old

Auckland Zoo is coming to you!

In this edition, we're celebrating some of the animals that we support around the world with our Wild Work. You can also learn how you can help our native wildlife at home.

Colour me in!



This is **my zoo**

▶▶ Lion ▶▶

Origin

Africa

Size

2.5m long



Diet

Antelope, zebra, wildebeest

Conservation status

[Vulnerable]

White patches under eyes to reflect more light in

Strong chest muscles to hold down prey 3x their size

Rough tongue covered in small spines to rip meat off bones

Retractable claws

Lions live in a group called a _____.

Black-handed spider monkey ▶▶

Origin

Central & South America

Size

Body 63cm
Tail 84cm

Diet

Fruit, leaves, seeds, insects

Conservation status

[Endangered]

Forward facing eyes – gain a clear 3D image

Scent glands on chest to mark territory

Prehensile tail – can support own body weight

No thumbs – hands hook onto branches when swinging

Spider monkey tails have a unique print, just like your _____. No two are the same.

Tasmanian devil

Origin

Tasmania,
Australia

Size

65cm long

Diet

Carion – small
dead mammals,
birds, insects

Conservation status

Endangered

Great eye sight
for searching for
food at night

Excellent sense of
smell to find food

Powerful bite to
chomp bones

Pouch to carry young
similar to a wallaby pouch

Scientific name: *__arch__phi__ __s h__rr__s__i.*

Cotton top tamarin

Origin

Colombia,
South America

Size

Body 23cm
Tail 40cm

Diet

Insects, fruit,
flowers

Conservation status

**Critically
Endangered**

Fore and hind limbs
similar size to allow
movement on all fours

Claws for holding
onto trees

Long tail to assist
with balance

First toe has a nail
used for grooming

Cotton top tamarins are one of the world's
25 most endangered _____.

Rough scaled gecko

Origin
Kaikoura Ranges,
New Zealand

Size
17.5cm long

Diet
Insects

**Conservation
status**
[At risk]

No eyelids – lick eyes
to keep them clean

Finely tapered tail
to grasp tree branches

Tiny hair-like fibres
on feet provide grip
to climb on smooth,
vertical surfaces

Can shed tail to
confuse predators

Females are usually _____,
but males are often _____.

Red panda

Origin
Himalayas
(Nepal, India, Bhutan,
Myanmar, China)

Size
117cm long
(including tail)

Diet
Mostly bamboo

**Conservation
status**
[Endangered]

Gaps between teeth
to help strip bamboo

Wrist bone acts like
a thumb so they can
hold branches

Thick double fur coat
to keep warm

Furry soles on feet prevent
slipping on branches and
keep feet warm

Spend up to _____ hours a day eating bamboo.

Southern white rhinoceros

Origin
Southern Africa

Size
1.9m tall

Diet
Grass

Conservation status

Near threatened



Ears move independently to pick up sounds

Strong muscular hump to support head



Horn made of keratin, like your fingernails

Three toes on each foot help distribute weight

Rhino can run short sprints up to _____. How fast can you run?

Pātekē Brown teal

Origin
Northland,
Little Barrier Island,
Great Barrier Island,
New Zealand

Size
48cm long

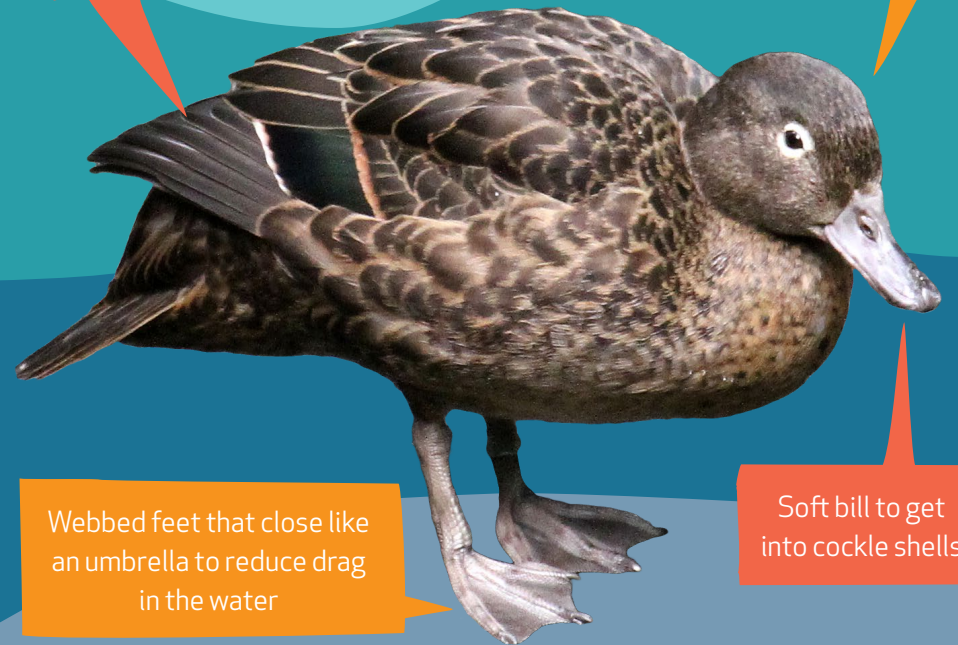
Diet
Insects, plants,
seeds

Conservation status

At risk

Special gland produces oil to keep feathers waterproof

White ring around eyes



Webbed feet that close like an umbrella to reduce drag in the water

Soft bill to get into cockle shells

Auckland Zoo contributes to a _____ and _____ programme to support pāteke.

Cotton top tamarins



Who am I?



Who is who?

<input type="text"/>	Golden lion tamarin	<input type="text"/>	Giraffe
<input type="text"/>	Tiger	<input type="text"/>	Elephant
<input type="text"/>	Kea	<input type="text"/>	Takahē

Where in the world
are these **animals**
from?



LITTLE DEVILS, BIG TROUBLE



Called DFTD, the disease is a rare form of contagious cancer, spread through biting and close contact.



Large, painful tumours grow on the infected animal's neck and face, with almost all victims dying from starvation or organ failure.

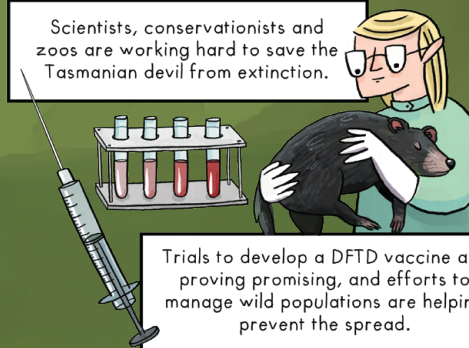


Less than 10 years after being identified, the disease saw devils classified as an endangered species. They remain in decline.

Fortunately...

THERE IS HOPE!

Scientists, conservationists and zoos are working hard to save the Tasmanian devil from extinction.



If the disease can't be stopped, breeding programmes set up by Australian zoos offer a chance to reintroduce healthy animals to the wild.

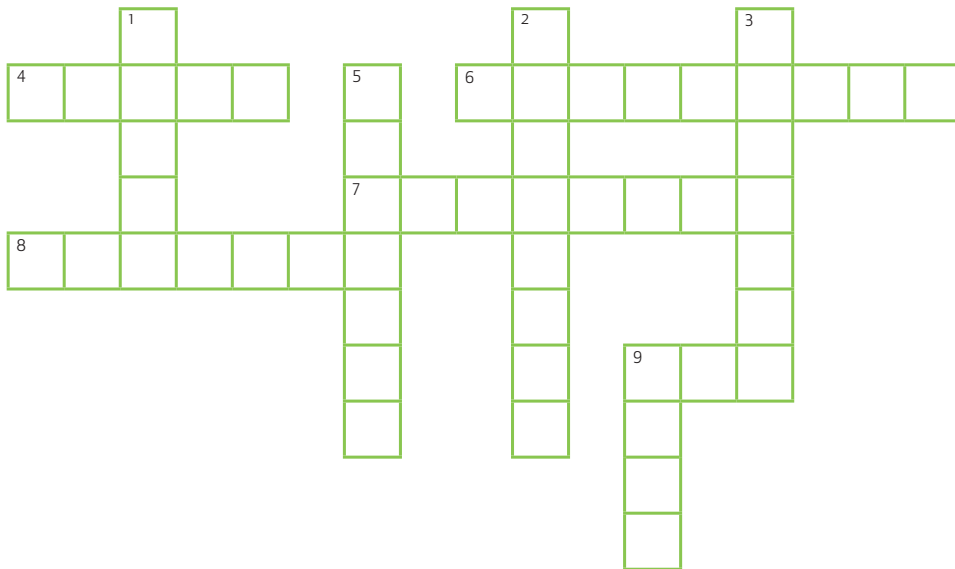


Devils aren't taking DFTD sitting down either. Some are already showing resistance to the cancer - a potential game changer not just for them, but human cancer research too.



Crossword

Discover some of the animals that Auckland Zoo supports in the wild



ACROSS

- 4 Has a horn made of keratin (5)
- 6 New Zealand's largest insect (9)
- 7 World's largest land animal (8)
- 8 World's tallest land animal (7)
- 9 World's only alpine parrot (3)

DOWN

- 1 Animal with stripes (5)
- 2 A tree climbing mammal (3,5)
- 3 A living dinosaur (7)
- 5 World's fastest land animal (7)
- 9 Flightless New Zealand bird (4)

*answers on back page



Siân Buley
Pest management coordinator

My role at the Zoo is Pest Management Coordinator. This means I am in charge of keeping pest animal and plant numbers low, to make sure that our Zoo is a safe place for our animals, native species and visitors.

My favourite part of the day is that no two days are the same. I love telling people about what I do, and how important it is for animal welfare and conservation, whenever I get the chance.

My top tip for you to help at home is to find out what pest plants or animals are lurking in your backyard, then make a plan to remove them so that native wildlife can flourish there.

What I love about my job is the variety, and knowing that I'm making a difference. I love to hear the deafening dawn chorus in the Zoo, and know that it's so loud because the numbers of rats around are really low because of our work.

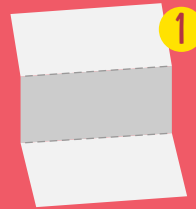
Auckland Zoo is
working hard to make
the Zoo **pest** free

Make a tracking tunnel

Find out if pests or pals live in your garden

you will need:

- A3 size white card
- plastic lid
- stapler
- 1 tissue
- 1 teaspoon of food colouring, mixed with 2 teaspoons water
- 1 teaspoon peanut butter



1
fold card to width of plastic lid



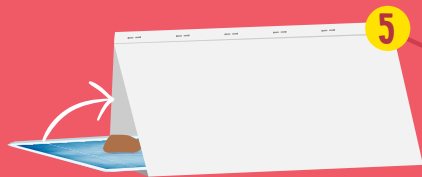
2
fold up sides and staple the top



3
fold tissue to fit in plastic lid then pour food colouring/water mix onto tissue until it's soggy



4
put peanut butter in middle of tissue

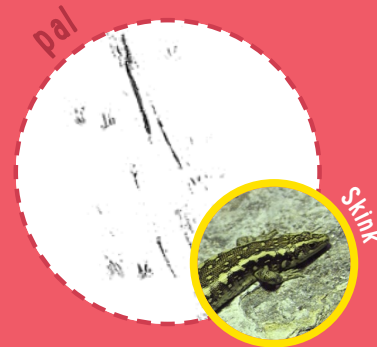
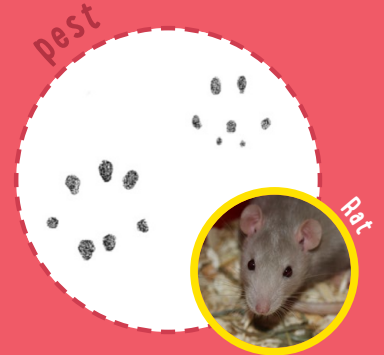


5
put your tracking tunnel in a sheltered spot in the garden and leave overnight

6
check your tunnel the next morning to find out if you have pests or pals



Who left the tracks?



What birds live in your backyard?

native



Tūi

introduced



Sparrow

native



Pīwakawaka
Fantail

introduced



Myna

native



Tauhou
Silver eye

introduced



Blackbird

Encourage more native birds in your backyard

Plant native trees



Kōwhai

Tūi eat the flowers
and nectar



Manuka

Pīwakawaka feed on insects
that are attracted to this tree



Harekeke (flax)

Tauhou feed on
the nectar

Control pests

After you make your tracking tunnel, find out if you have pests,
you can check out the best ways to control them.

Search 'backyard tracking' at www.doc.govt.nz

ANSWERS:

Lion: pride; Spider monkey: fingerprint; Tasmanian
devil: *Sarcophilus harrisii*; Cotton top tamarin:
primates; Rough scaled gecko: green, grey; Red
panda: 13; Southern white rhinoceros: 40km/hr;
Pāteke: breed, release

Crossword answers: Across 4, Rhino; 6, Wētāpunga;
7, Elephant; 8, Giraffe; 9, Kea. Down: 1, Tiger; 2, Red
panda; 3, Tuatara; 5, Cheetah; 9, Kiwi

Thanks RFA, for making
all our work possible.

**Regional
Facilities Auckland**
An Auckland Council Organisation

Principal partner:

