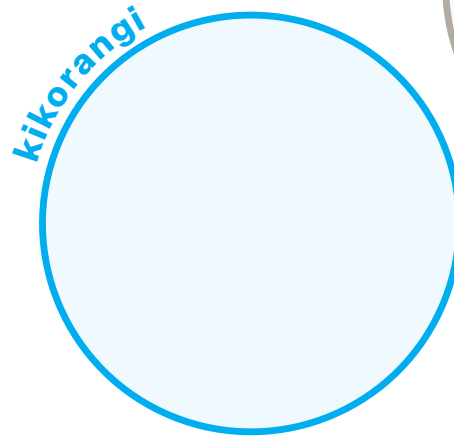


# Hīkoi Uenuku (Rainbow Walk)

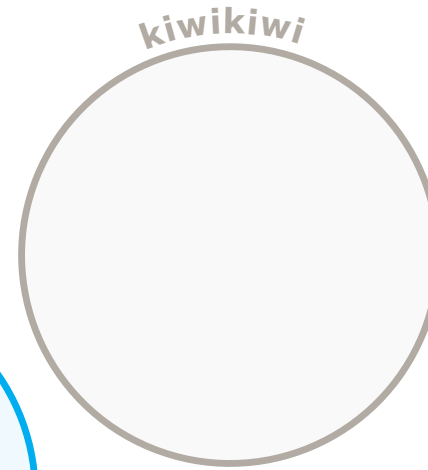
The environment is full of colour, from kararehe (animals) and their bodies, to tipu (plants) with their leaves and flowers.

Next time you are at the zoo, out for a walk in nature or even staying inside you can try our Hīkoi Uenuku challenge and try to find something for each tae (colour) - practice the kupu for ngā tae at the same time!

**Remember:** If you find something you like, remember to help keep our plant kingdom healthy by only taking leaves or flowers that have already fallen onto the ground.



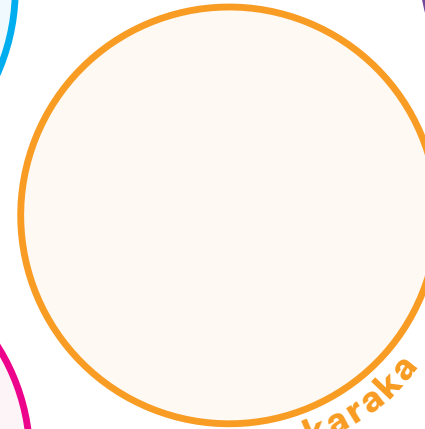
kikorangi



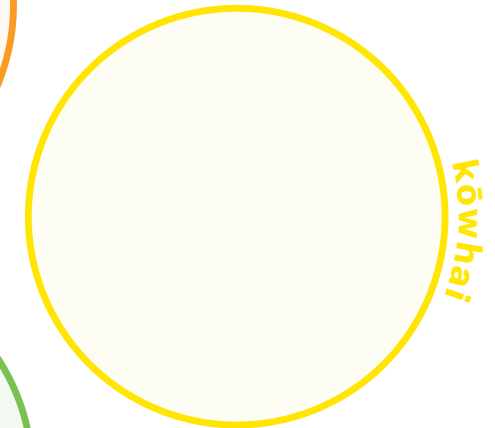
kiwīkiwi



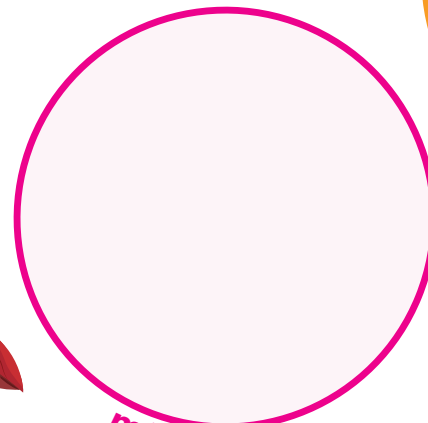
poroporo



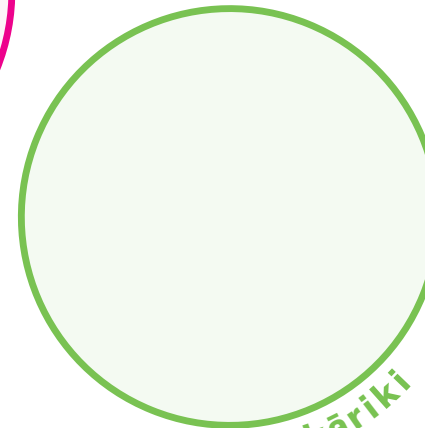
karaka



kōwhiri



māwhero



kākārīki

Take a picture, write it down, draw a sketch or just have a kōrero about what you find on your Hīkoi Uenuku!