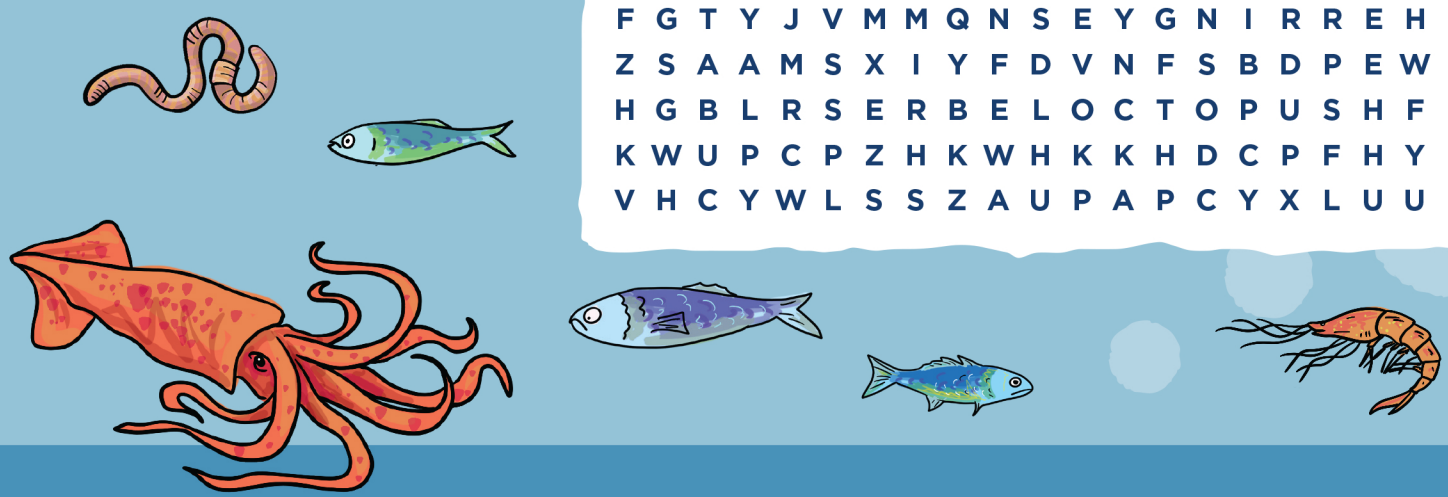


Kupu huna

Can you find 20 tasty treats that seabirds in Aotearoa love to eat?

- | | |
|---------------|--------------|
| 1 Krill | 11 Seaweed |
| 2 Anchovies | 12 Pilchards |
| 3 Squid | 13 Mussels |
| 4 Sand eels | 14 Barnacles |
| 5 Crustaceans | 15 Jellyfish |
| 6 Whitebait | 16 Plankton |
| 7 Sprats | 17 Octopus |
| 8 Crabs | 18 Lamprey |
| 9 Worms | 19 Shrimp |
| 10 Copepods | 20 Herring |

W N K S D I O P Q P Y F M C F J M Q R A
 L B B A L I M X D H G T D R M V D W O Z
 N E A N B W U K R I L L P U U V R H C K
 H B C D I R I Q D G Y I S S P P B I K R
 F G A E I O X P S N L S W T L G W T W I
 J Q Y E R P M A L C E K L A A X R E J O
 P E B L E S Y R H L S S J C N B T B F R
 Z O L S P R M A S E J D O E K H T A P U
 A C W L U R R R I T C V X A T C C I J G
 N R K Q Y D G V O Z O Q D N O I U T C Q
 Y R E O S F O F P W P A U S N C S N U M
 V E H Q N H I S T F E T X H M E A F L C
 M A W M C M L S Q Z P J S B A R C Y X I
 Z J K N L B H P H N O T W W S W U R R R
 Y S A Y H L B P P M D S E L C A N R A B
 F G T Y J V M M Q N S E Y G N I R R E H
 Z S A A M S X I Y F D V N F S B D P E W
 H G B L R S E R B E L O C T O P U S H F
 K W U P C P Z H K W H K K H D C P F H Y
 V H C Y W L S S Z A U P A P C Y X L U U

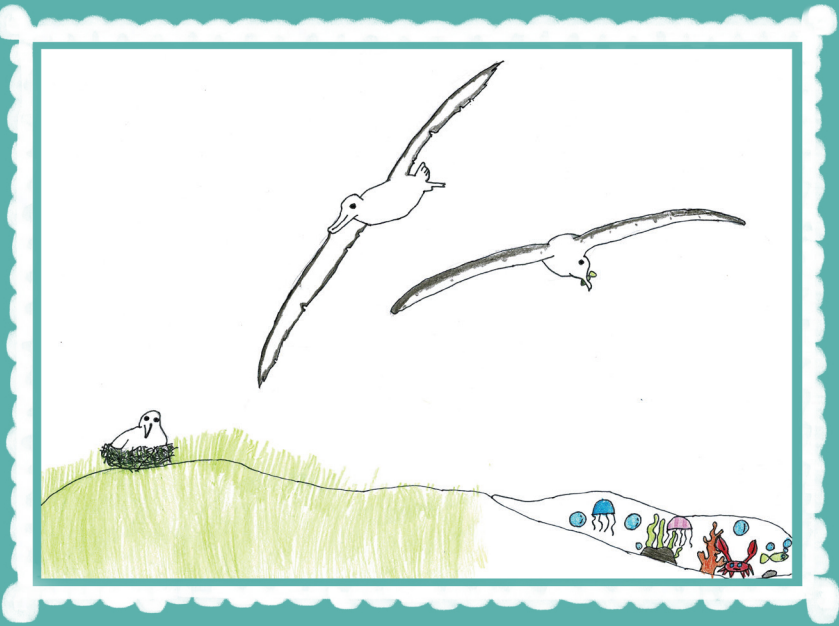


Albatross competition

We received a wonderful entry from Alexis McGregor (9) to last issue's albatross chick drawing competition!



Shoutout to Felicity (8) and Maddie (10) who dropped off these whale-y great drawings to the museum. Krill-tastic!



Win with Professor Flipperstein!

Get your creative juices flowing and help us imagine Professor Flipperstein's adventures!

Grab your colouring pencils and draw in his surroundings—where do you think he is, and what is he investigating? Is he exploring the deep sea, wandering through a coastal forest, or studying seabird colonies on a rocky shore?

Once your masterpiece is complete, take a photo and send us your drawing to be in to win an eel plushie from our gift shop!



Enter

by emailing us at info@maritimemuseum.co.nz

or tag us on Insta or Facebook:

@nzmaritimemuseum



Curious Collections

This colour slide shows a Shy albatross – Shy is the type of albatross, not how it was feeling! – at Southwest Cape at the Auckland Islands, in January 1995. This is just one of several thousand colour slides taken by Gerry Clark and others.

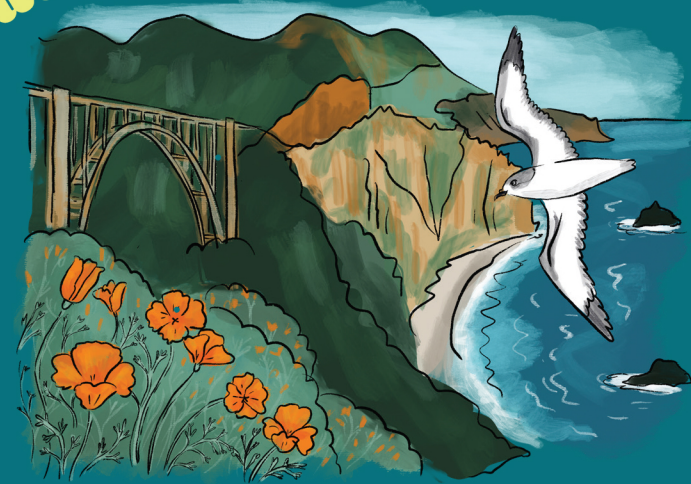
Gerry Clark was a New Zealand sailor, writer, and bird expert. He built a yacht called TOTORORE and sailed around Antarctica, studying seabirds to learn about ocean health. His adventures took him to many places in the Southern Ocean and around New Zealand. Sadly, during a voyage to the Antipodes Islands, Gerry and his crew member, Roger Sale, went missing in a storm, and only small pieces of TOTORORE were found.



NZMM 2017.40.5475

Spot the difference

Can you spot the five differences between these two pictures?



Answers: red cars, extra orange flower, second bird, green boat, beach umbrella