



Victor Giborees photographed by Ben Journee

An exhibition by our friends
from Māpura Studios

5-21 December 2022

Waves:

A Reflection of the Sea

In August artists from Māpura Studios visited the New Zealand Maritime Museum Hui Te Ananui a Tangaroa and were invited to create an artistic response. The visit was a generative point of departure and the exhibition reflects each artists' particular relationship to the ocean.

Some of these works narrate the artist's migration stories; depict specific sailing vessels, and recall watery experiences

such as pole fishing and encountering marine life. Other works render ships, voyages and stories that intonate a more interior journey; the artist's experience of stillness, tumult, intimacy, vastness, departure and arrival. Held tautly within and between each of the works is an awareness of our bodies and lives as bound to the ocean but never completely belonging to it.



The Ancient Mariner

Not for sale
- enquiries taken

Victor Giborees

Victor's epic painting takes inspiration from Samuel Taylor Coleridge's poem *'The Rime of the Ancient Mariner'*. In the poem the key protagonist, a weathered sailor, takes hold of a fellow wedding guest and recounts his journey and its fateful events. In this painting, Victor captures the pivotal scene where

the mariner callously kills the ship's benefactor, the albatross. This action sets in motion a series of cascading events which illustrate man's inhumanity to animals and their environment; and the human experience of loneliness, depression, retribution and forgiveness.



Deirdre Parr

The Maritime Museum is home to *Ted Ashby*, the heritage scow represented in this painting. In this work Deirdre recalls her experience on the ship. Her soft but precise rendition makes it easy to imagine what it might be like to feel the breeze and buffet of the ocean aboard with these passengers.

Ted Ashby

\$320



Guy Seanyear

1

In these two companion pieces Guy has depicted the bookends of an experience fishing. He notes, 'The fishermen watch how the sea looks as well observing the wind and the moon. They learn how to wait because with time brings fortune'.

- 1 **Sleeping Lady of the Sea**
- 2 **Morning Glory**
\$320 each
- 3 **A Good Kip from the Ocean**
\$180

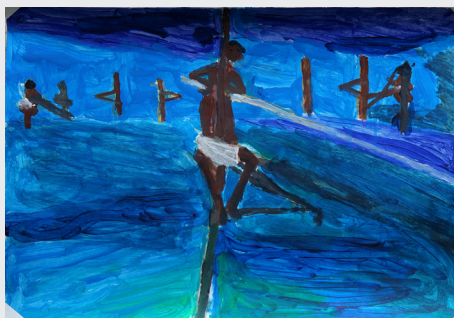
3



1

Sunil Kankanamge

Sunil's family holds connections across the Pacific, from Fiji to Sri Lanka. In his fluidly distinct style, he has drawn on his memories encountering marine life



2

- 1 **Shark**
- 2 **Pole Fishing in Sri Lanka**
\$295 each

and watching and waiting for a catch atop of a fishing pole.



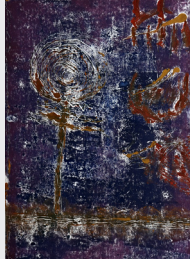
1

Gerri Power

The three prints Gerri has generated are thick with layers of colour, movement and meaning. They have been produced through the process of rolling, scraping and brushing ink which has then been pressed into paper. Through this process a window of light in a sea of darkness emerged, a lone figure or form in a flood of colour, and a bright horizon with an eerily discordant ocean beneath. In her practice Gerri is drawn to abstraction and poetry.



2



3

- 1 The Vision
- 2 Night in the Dark
- 3 Chaos

\$200 each

Kerry Deane

"I am primarily attracted to landscapes in my art practice. These two works express my sense that ships and their sails are, in effect, man-made landscapes imprinted onto the ocean and the sky. The sepia tone is designed to evoke a sense of time that has passed, which is further evident in the 19th-century gaff rigging system. The subtle movement of the boat is designed to reflect larger geological movement, as is the case in New Zealand's mountains.



1

2



- 1 Sails on Sunset
- 2 Sails on Dusk

\$300 each



1

Erica Tiedemann

These original drawings are inspired by technology, navigation and the natural world. These works bring Māori and Pacific navigation technologies into conversation with European technology.

In doing so they offer us the opportunity to consider the courage and fierce intelligence that our ancestors embodied in order to traverse the moana.

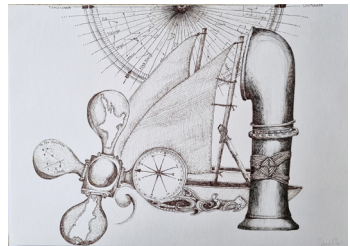
“When I saw Black Magic I saw an Orca, Maki. The shape of the keel, the colour and presence of this winning yacht. It’s speed, horo. In researching, I discovered that this particular keel is a pod keel. Whilst not discovering if this was purposeful, my mind connects them seamlessly. He maki māngi... Swift Orca. Sir Peter Blake, a kiwi as fast as an orca, an explorer of the sea. A magical man.”



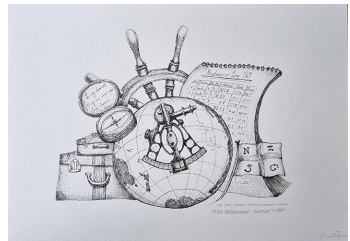
2



3



4



5

1 Sir Peter Blake Tribute No. 1

\$300

2 Ruruku: Bind Together, Lash

\$240

3 Pāneke Pāneke: Moving Forward

4 Kariri Mai: Sail Together Here

5 Tūhura: Discover, Explore

\$300 each

Prints on eco-friendly German etching paper 310GSM available for \$200 each

Allyson Hamblett

Allyson has created two works which reflect on different cultural traditions of maritime travel. The first is a mixed media painted object which recreates Te Tau Ihu, the prow of a waka located at the Maritime Museum.

"I have enjoyed creating art works for this exhibition. It was difficult to decide what to create from our visit to the Maritime Museum. I wanted to make a piece of object art. It was probably my favourite piece to work on. Quickly realising that carving wasn't my skill, I hope my endeavours have created a piece you enjoy seeing, as much as I enjoyed making."

The second work is a rendition of the artist traveling on the 'Takapuna' ferry that transported people from Auckland City to the North Shore.

"The ferry reminded me of the old ferries that transported people from Auckland City to the North Shore.



1

Interestingly, the old ferry was "The Takapuna", which came before my fond memories of travelling on the Kestrel."

1 **Tauihi**
\$400

2 **Travelling on the Takapuna**
\$220



2



1

Nigel Clunie

Nigel was born and raised in Fiji. His work often includes palm trees and the sea. On leaving school he joined the British Merchant Navy, working on the Blue Star Line ships. After he



2

1 **Mangawhai**
2 **Fijian Drua**
\$180 each

left life at sea he studied Botany and Forestry at Auckland University and ANU in Canberra. He is knowledgeable about trees and often paints them in his landscapes



Storm

\$180

Cherie Tagaloa

In this work Cherie has used sponges to create a sense of movement and furious beauty, viewed from afar. The intensity of this piece is offset by the subtle sense of companionship on the journey, a glimpse of the sun and rays of hope. Cherie reflects on the relationship between this work and her journey of living with a brain injury. "A storm in all its ferocity appears so beautifully surreal yet the battle we face in fighting the storm is so very real".

Tristan Rosevear

The daring use of black, aquamarine and magenta in this painting is typical of Tristian's work. This painting is emblematic of his sophisticated visual style which locates his works in the nether world, or in the space between the consciousness and its absence. Here Tristian depicts a vessel in motion, ambiguously piloted without a sense of clear direction.

Loosely translated as beyond the water's horizon, Tristan uses the image of a waka on the sea as a metaphor to describe his own journey back to the beginning - his rise towards Rangī-nui, the sky, and on towards the next life.



Beyond te Paewai o te Rangī

\$395

It also touches on the disconnection he feels from part of his ancestral whenua that is an Island.



1

1 **After Matisse 1**

2 **After Matisse 2**

\$180 each



2

Lorraine Richardson

Lorraine is an avid storyteller and sketcher. In the studio she is often found weaving historical fragments, personal experience and humor into stories about her family and ancestry. You can hear her narrating a snapshot of her family history and their arrival in Huia in this space. These drawings of ladies deep in thought about the past or future, are inspired by the fluidity and contrast of Matisse.



About Māpura Studios

Māpura Studios is an Auckland creative space that provides programmes and activities in visual arts practice, creative expression, dance-movement, music and art therapy for people living with disability and diversity. Māpura Studios has a policy of inclusion: any person of any background and life experience who is interested in developing their creativity is welcome.

mapurastudios.org.nz

Scan for more



Scan the QR code to listen to the artists' stories:

- Reece on his free-diving history
- Victor Giborees with excerpts from *The Ancient Mariner*
- Gerry reads a poem
- Lorraine Richardson and her family's immigration by the sea
- Watch a video of Nigel Clunie talking about his early years in the Merchant Navy

If you are interested in purchasing any of the artworks in this exhibition, please email alex@mapurastudios.org.nz