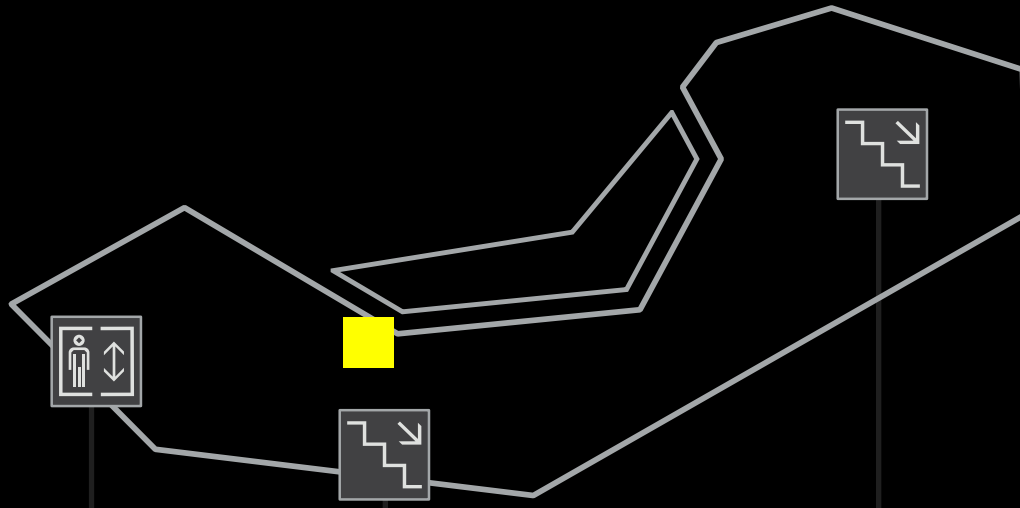


LEVEL 5



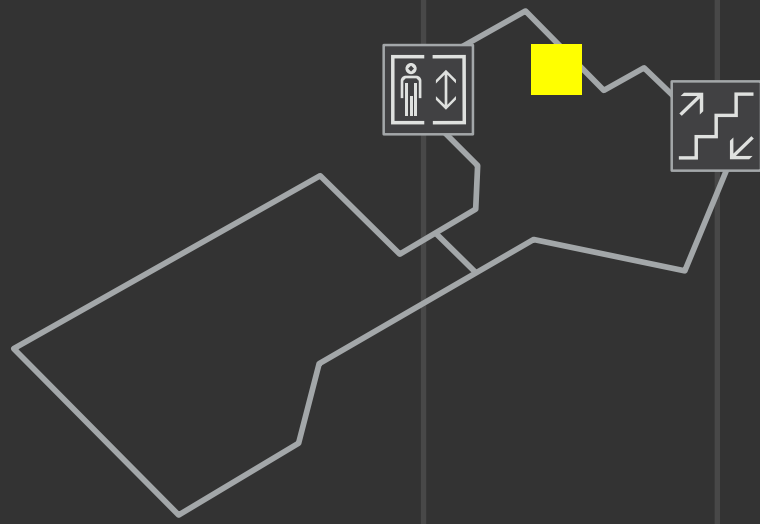
DAME CATHERINE TIZARD Artist - Dick Frizzell

Dick Frizzell was commissioned by the Edmiston Trust to paint this portrait as a lasting tribute to Auckland's first female mayor, and the driving force behind the Aotea Centre project.

Frizzell has a considerable reputation for his landscapes and pop art as well as the occasional portrait, but deciding how to portray the woman who was at that time Governor General of New Zealand was no easy task.



LEVEL 4



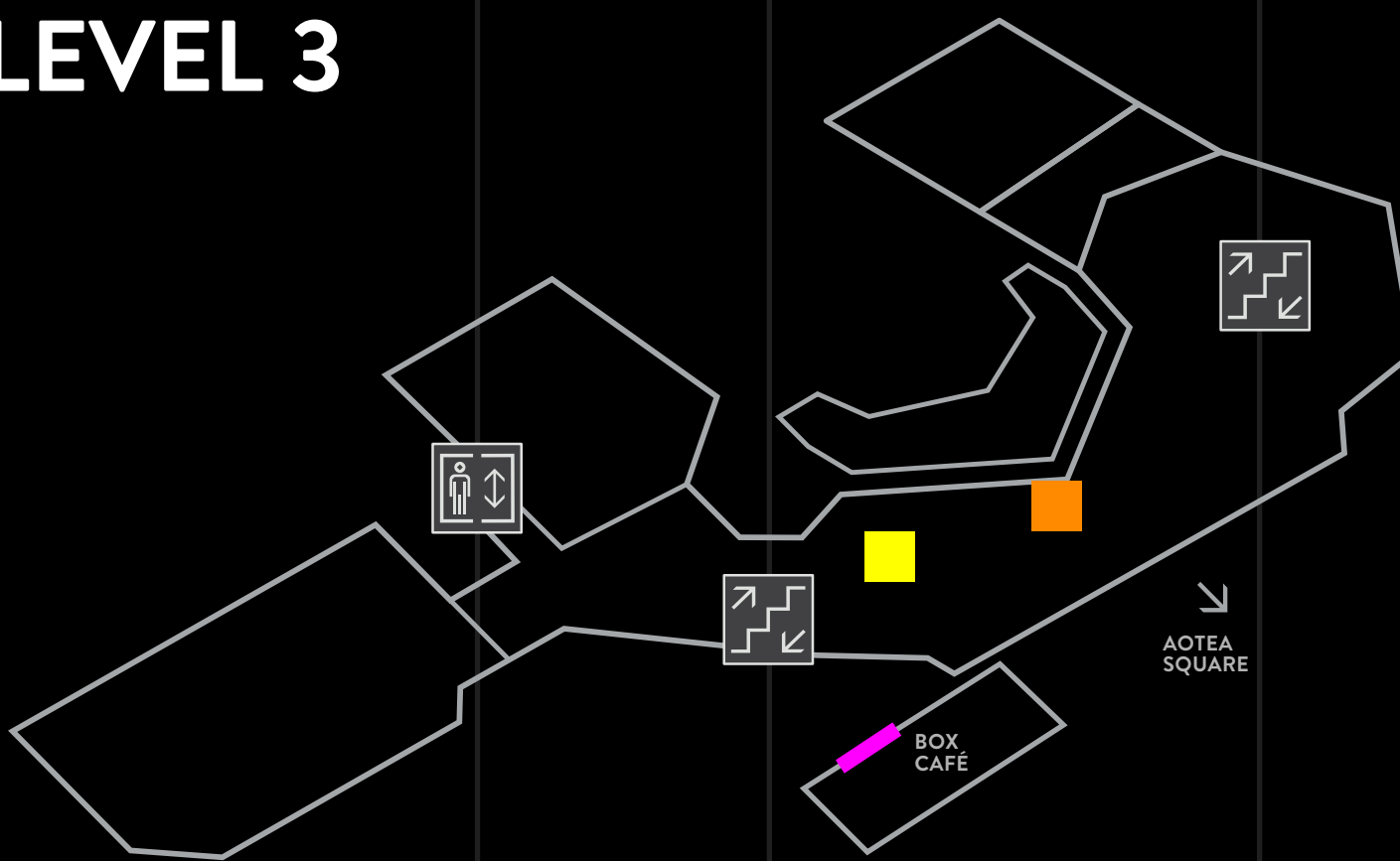
TAUTAI MATAGOFIE (WONDERFUL NAVIGATOR) Artist - Fatu Feu'u

Tautai Matagofie, a 32-square metre mural, is located in the QBE Gallery, next to the entrance to the offices of Regional Facilities Auckland on level 4 of the Aotea Centre.

Feu'u's vision of the mural is to show people from all over the Pacific coming to Aotearoa, with Tāmaki Makaurau as the unification point for all of them all.



LEVEL 3



AOTEA CARTOUCHE Artist - Denis O'Connor

Sculpted from Eritrea marble and Mt Somers limestone, the *Aotea Cartouche* is a commemorative stone that records the names of those involved with the building of Aotea Centre.



DAME KIRI TE KANAWA Artist - Terry Stringer

The 1.6 metre painted bronze statue was created by sculptor Terry Stringer. One of a group of artworks commissioned for Aotea Centre, the bronze was unveiled by Dame Kiri Te Kanawa herself at the opening of the Aotea Centre on 9 September 1990.

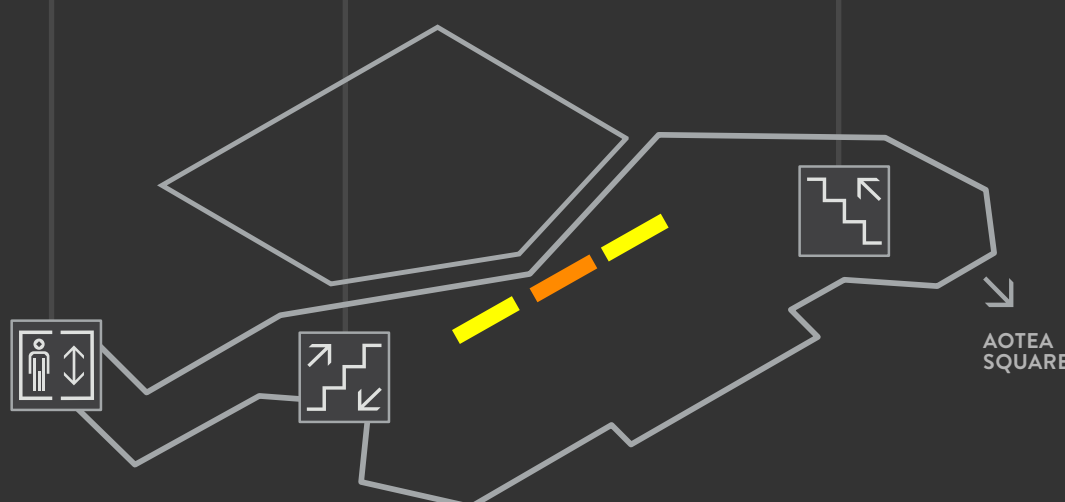


UNTITLED Artist - Paratene Matchitt

Summed up by the Māori word 'manaaki', meaning 'hospitality', Matchitt's interpretation of the work is that the powerful pieces of timber at the bottom of the mural represent the people of today, while the stainless steel forms at the top are their ancestors, both Māori and Pākehā.



LEVEL 2



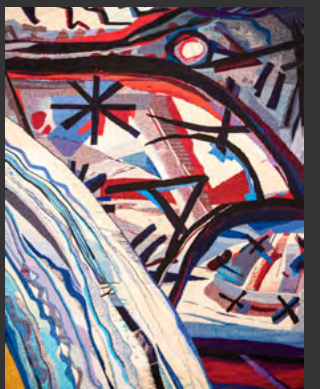
IHI Artist - Lisa Reihana

Ihi fills two floor-to-ceiling spaces in the Aotea Centre foyer, entrancing viewers with the story of Ranginui and Papatūānuku playing out on 65-square metre digital screens. *Ihi* is one of the largest and most significant works of contemporary Māori art in Aotearoa New Zealand.

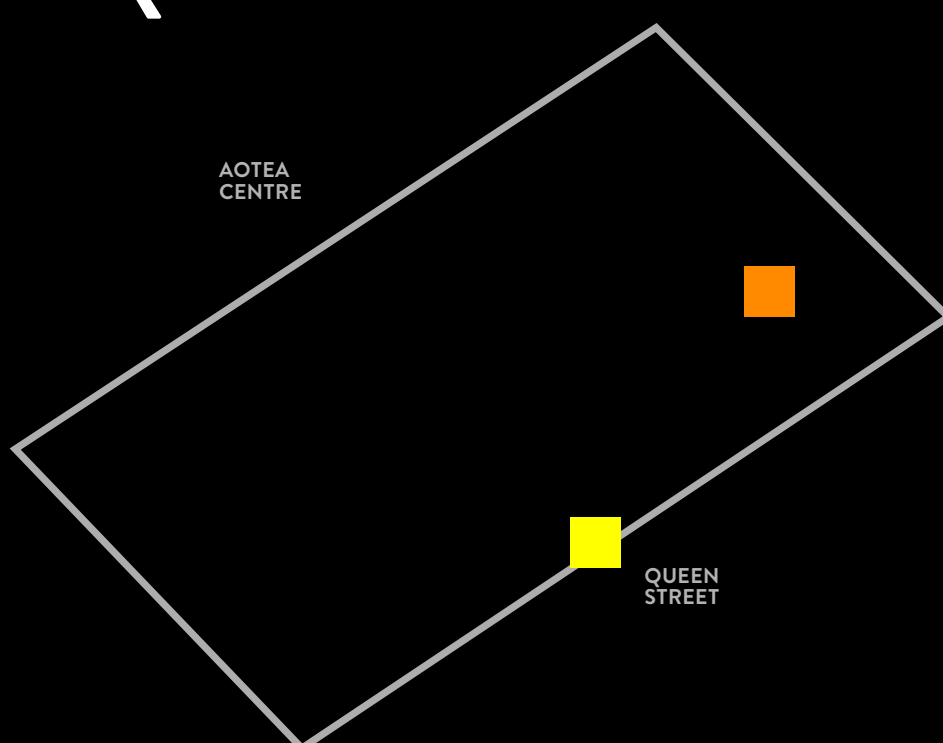


THE AOTEA TAPESTRY Artist - Robert Ellis

The *Aotea Tapestry* was designed by Robert Ellis and made at the Victorian Tapestry Workshop in Melbourne, taking six weavers nearly two years to complete. Hailed as one of the most significant contemporary tapestries, *The Aotea Tapestry* is Aotea Centre's principal artwork, one of a set of artworks commissioned for the building.



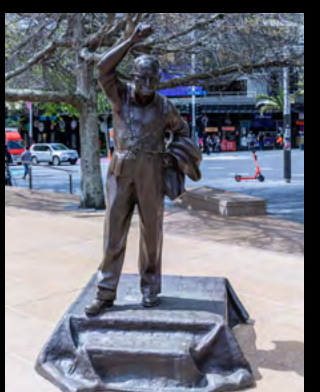
AOTEA SQUARE



ROBBIE Artist - Toby Twiss

A memorial sculpture of former Auckland City mayor, Sir Dove-Myer (Robbie) Robinson stands in Aotea Square next to the steps leading down from Queen Street.

The bronze statue is life-size, and was commissioned in 2002, the one-hundredth anniversary of Robinson's birth. The sculpture celebrates the extraordinary contribution Robbie made to the city.



WAHAROA Artist - Selwyn Muru

Waharoa is a seven-metre high gateway to Aotea Square and stands at the entrance, transforming it into a marae or meeting place, and the Aotea Centre into a meeting house. Created by Selwyn Muru, *Waharoa* is one of a series of pieces commissioned for the Aotea Centre.

