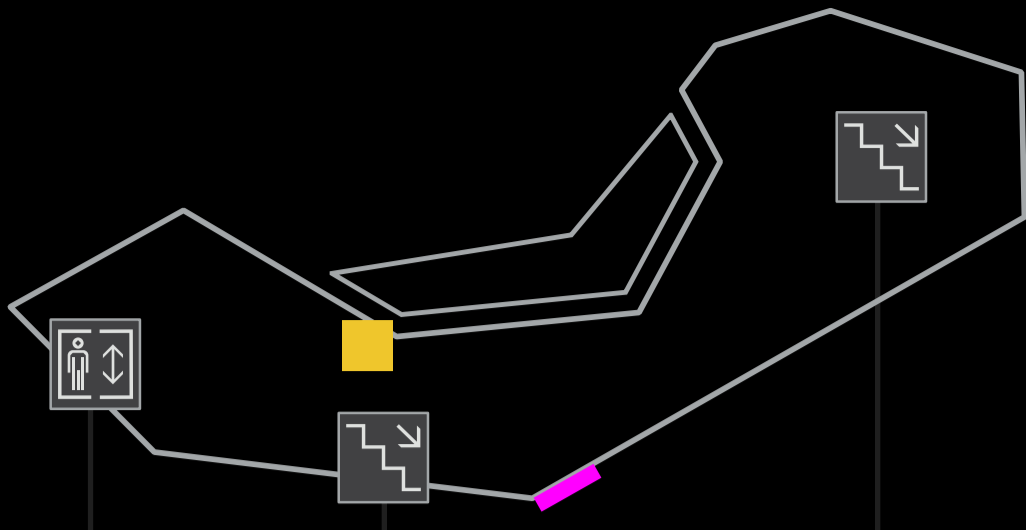


LEVEL 5



DAME CATHERINE TIZARD

Artist - Dick Frizzell

Dick Frizzell was commissioned by the Edmiston Trust to paint this portrait as a lasting tribute to Auckland's first female mayor, and the driving force behind the Aotea Centre project. Frizzell has a considerable reputation for his landscapes and pop art as well as the occasional portrait, but deciding how to portray the woman who was at that time Governor General of New Zealand was no easy task.



UNTITLED

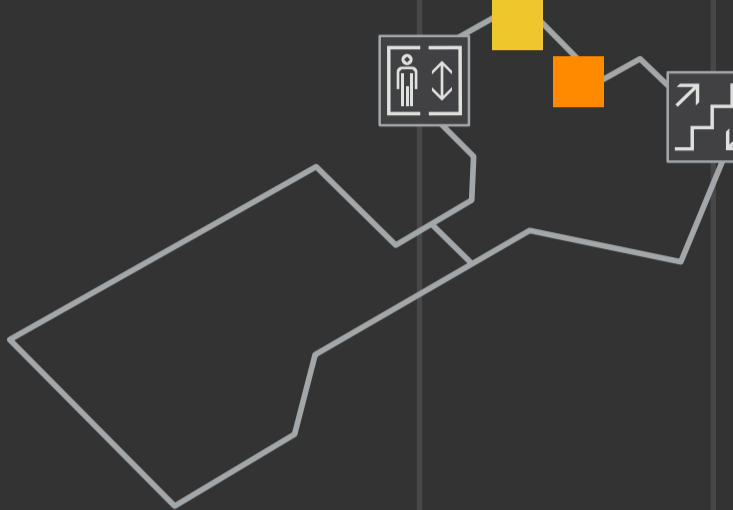
Artist - Paratene Matchitt

Summed up by the Māori word 'manaaki', meaning 'hospitality', Matchitt's interpretation of the work is that the powerful pieces of timber at the bottom of the mural represent the people of today, while the stainless steel forms at the top are their ancestors, both Māori and Pākehā.

Full artwork viewable from Aotea Square on Levels 3 - 5, Aotea Centre.



LEVEL 4



TAUTAI MATAGOFIE (WONDERFUL NAVIGATOR)

Artist - Fatu Feu'u

Tautai Matagofie, a 32-square metre mural, is located in the QBE Gallery, next to the entrance to the offices of Regional Facilities Auckland on level 4 of the Aotea Centre.

Feu'u's vision of the mural is to show people from all over the Pacific coming to Aotearoa, with Tāmaki Makaurau as the unification point for them all.

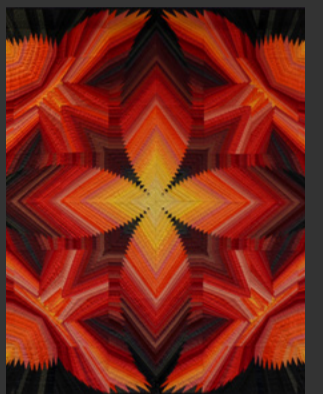


PUTANGA O TE RA (BIRTH OF THE SUN)

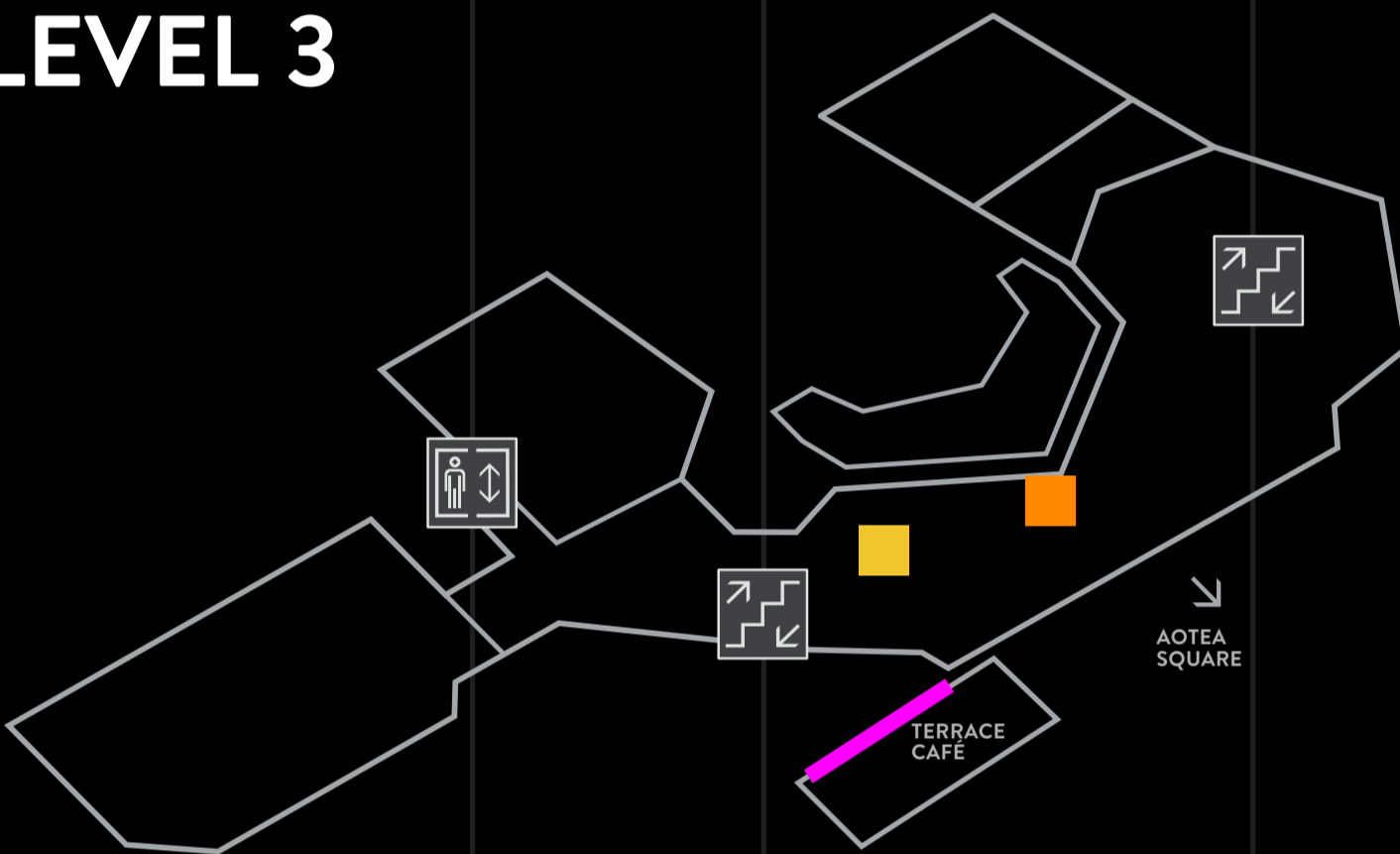
Artist - Gwen Wanigasekera

Inspired by the Pineapple Log Cabin pattern, artist Gwen Wanigasekera developed this tapestry from a small sketch, translated onto graph paper and transposed onto vilene sewing the fabric in reverse.

Made of cotton, chintz, satins and silks, the fabrics were hand dyed to achieve the desired shades of colours.



LEVEL 3



AOTEA CARTOUCHE

Artist - Denis O'Connor

Sculpted from Eritrea marble and Mt Somers limestone from Canterbury, the Aotea Cartouche is a commemorative stone that records the names of those involved with the building of Aotea Centre. However, like cartouches of the Baroque and Renaissance periods, it is also rich in imagery and symbolism.



DAME KIRI TE KANAWA

Artist - Terry Stringer

The 1.6 metre painted bronze statue was created by sculptor Terry Stringer. One of a group of artworks commissioned for Aotea Centre, the bronze was unveiled by Dame Kiri Te Kanawa herself at the opening of the Aotea Centre on 9 September 1990.



UNTITLED

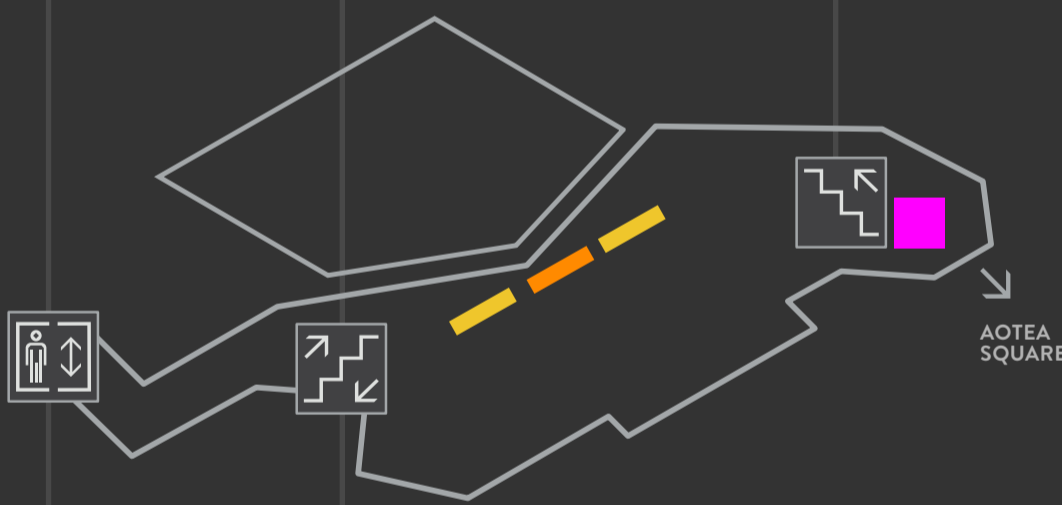
Artist - Paratene Matchitt

Summed up by the Māori word 'manaaki', meaning 'hospitality', Matchitt's interpretation of the work is that the powerful pieces of timber at the bottom of the mural represent the people of today, while the stainless steel forms at the top are their ancestors, both Māori and Pākehā.

Full artwork viewable from Aotea Square on Levels 3 - 5, Aotea Centre.



LEVEL 2



IHI

Artist - Lisa Reihana

Ihi fills two floor-to-ceiling spaces in the Aotea Centre foyer, enthraling viewers with the story of Ranginui and Papatūānuku playing out on 65-square metre digital screens. Ihi is one of the largest and most significant works of contemporary Māori art in Aotearoa New Zealand.



THE AOTEA TAPESTRY

Artist - Robert Ellis

The Aotea Tapestry was designed by Robert Ellis and made at the Victorian Tapestry Workshop in Melbourne, taking six weavers nearly two years to complete. Hailed as one of the most significant contemporary tapestries, The Aotea Tapestry is Aotea Centre's principal artwork, one of a set of artworks commissioned for the building.



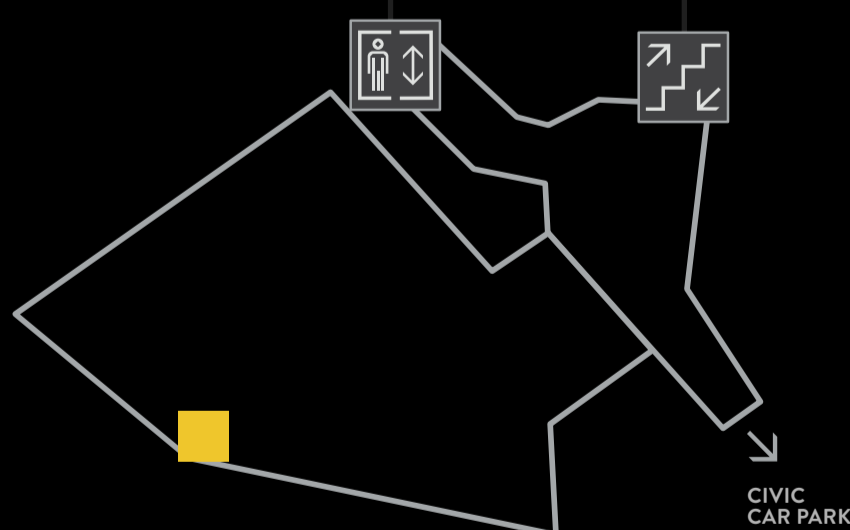
TAULA THE ANCHOR STONE

Artist - Sopoalemalama Filipe Tohi

Tohi created this piece during a four-day Pacific Vision Conference held at the Aotea Centre in 1998. It represents Pacific Island people navigating the currents of the new millennium. The anchor stone form is familiar to many Pacific cultures.



LEVEL 1

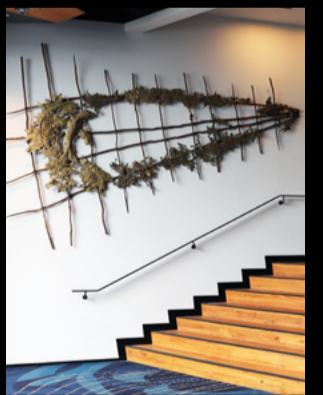


BABY SEAL AT KAIMAUMAU

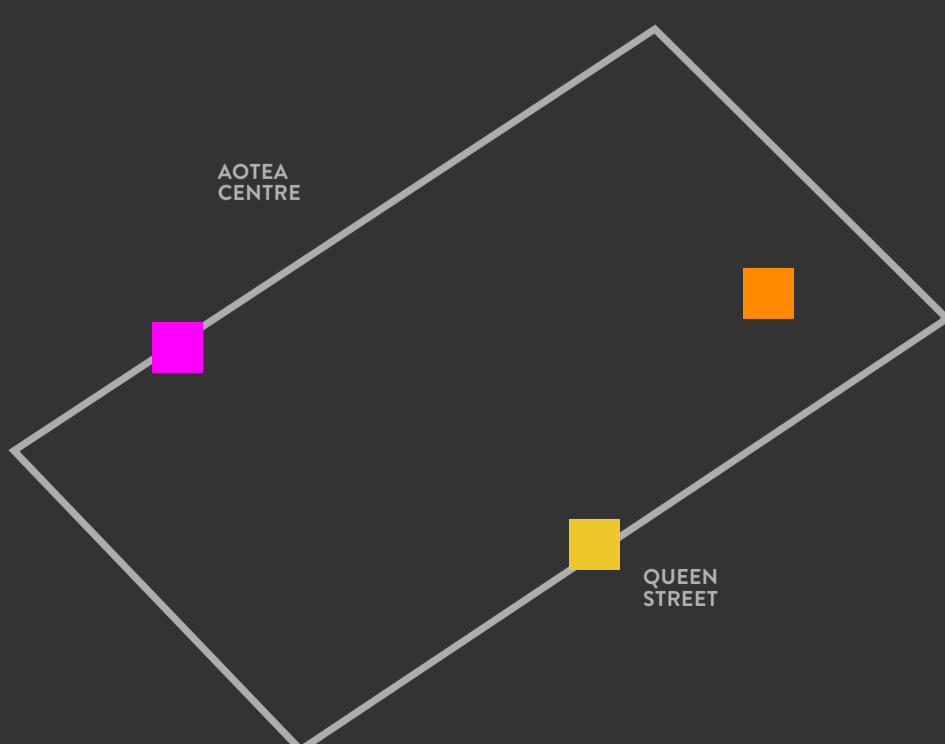
Artist - Chris Booth

The artist came across a dead baby seal washed up at Kaimaumau in Northland. The artwork was created by pouring melted silicon bronze on the sand where the seal was found. Nikau palm fronds and shells were placed around it. Manuka, a common New Zealand wood, was used for the splint framework which forms the grid.

The comment I wanted the sculpture to make is my concern about the disastrous effects humans are having on our natural environment - particularly their exploitation of the sea.
- Chris Booth



AOTEA SQUARE



ROBBIE

Artist - Toby Twiss

A memorial sculpture of former Auckland City mayor, Sir Dove-Myer (Robbie) Robinson stands in Aotea Square next to the steps leading down from Queen Street. The bronze statue is life-size, and was commissioned in 2002, the one-hundredth anniversary of Robinson's birth. The sculpture celebrates the extraordinary contribution Robbie made to the city.



WAHAROA

Artist - Selwyn Muru

Waharoa is a seven-metre high gateway to Aotea Square and stands at the entrance, transforming it into a marae or meeting place, and the Aotea Centre into a meeting house. Created by Selwyn Muru, Waharoa is one of a series of pieces commissioned for the Aotea Centre.



RED DANCER

Artist - Barry Lett

The figure contrasts a posed, lithe upper body with relaxed legs. The contrast also refers to theatrical properties of tragedy and comedy, or the 'hero' and 'antihero'. The construction uses hundreds of pieces of wood glued and screwed into an organic matrix.

Initially designed to be free-standing, the work ended up prominently displayed on the outside wall of Aotea - Te Pokapū, Aotea Centre.

