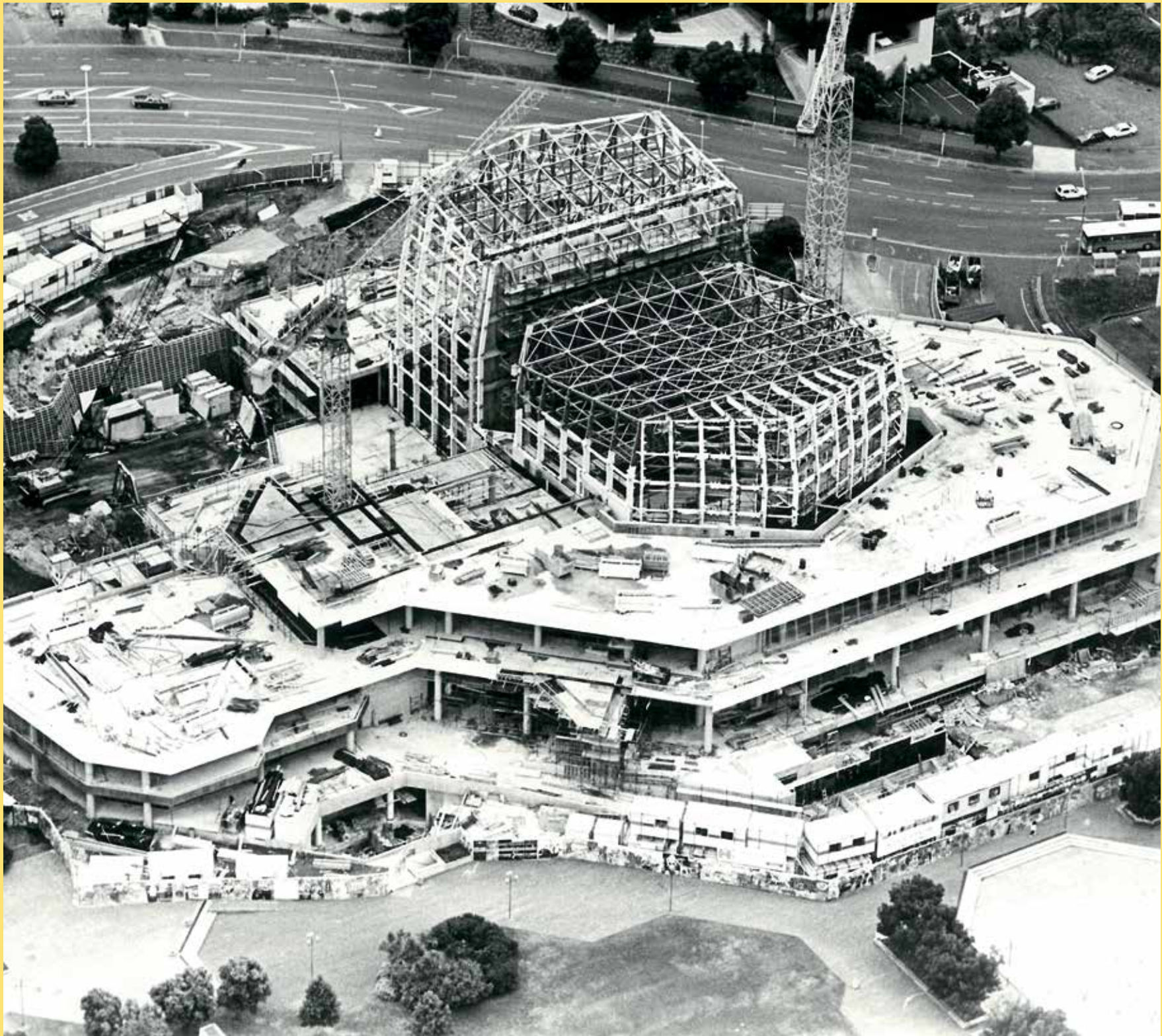


AUCKLAND LIVE

THE TRANSFORMATION OF ARTS AND CULTURE IN TĀMAKI MAKĀURAU

1989	CONSTRUCTION OF THE AOTEA CENTRE IS COMPLETED
1997	THE EDGE BRAND WAS CREATED
1999	THE EDGE SECURED MANAGEMENT OF THE AOTEA SQUARE
	THE CIVIC WAS RESTORED TO ITS FORMER GLORY
2004	THE CONVENTION WING OF THE AOTEA CENTRE WAS REFURBISHED
2005	THE EDGE UPGRADED ITS CLIENT BOOKINGS AND MANAGEMENT SYSTEM
2007	THE EDGE INTERNATIONAL ARTS SEASON WAS LAUNCHED
2009	THE AUCKLAND FRINGE FESTIVAL WAS DEVELOPED
2010	THE AOTEA SQUARE WAS REFURBISHED TO SUPPORT CROWDS UP TO 20,000 PEOPLE
	THE AUCKLAND TOWN HALL ORGAN WAS RESTORED
	PICK & MIX, A FREE WORKSHOP AND PERFORMANCE PROGRAMME, WAS LAUNCHED
	REGIONAL FACILITIES AUCKLAND (RFA) WAS ESTABLISHED
2011	THE EDGE BECAME ONE OF THE FIRST ARTS ORGANISATIONS IN NEW ZEALAND TO IMPLEMENT AN ARTS ACCESS PROGRAMME
	DIGITAL ART LIVE WAS CREATED, IN PARTNERSHIP WITH AUCKLAND UNIVERSITY OF TECHNOLOGY
2012	THE ASB THEATRE, AOTEA CENTRE (NOW KIRI TE KANAWA THEATRE) WAS REFURBISHED
2013	THE EDGE’S STAFF TRAINING RESOURCE WAS RECOGNISED BY ENTERTAINMENT VENUES ASSOCIATION OF NEW ZEALAND





AUCKLAND LIVE

THE TRANSFORMATION OF ARTS AND CULTURE IN TĀMAKI MAKĀURAU

1989	CONSTRUCTION OF THE AOTEA CENTRE IS COMPLETED
1997	THE EDGE BRAND WAS CREATED
1999	THE EDGE SECURED MANAGEMENT OF THE AOTEA SQUARE THE CIVIC WAS RESTORED TO ITS FORMER GLORY
2004	THE CONVENTION WING OF THE AOTEA CENTRE WAS REFURBISHED
2005	THE EDGE UPGRADED ITS CLIENT BOOKINGS AND MANAGEMENT SYSTEM
2007	THE EDGE INTERNATIONAL ARTS SEASON WAS LAUNCHED
2009	THE AUCKLAND FRINGE FESTIVAL WAS DEVELOPED
2010	THE AOTEA SQUARE WAS REFURBISHED TO SUPPORT CROWDS UP TO 20,000 PEOPLE THE AUCKLAND TOWN HALL ORGAN WAS RESTORED PICK & MIX, A FREE WORKSHOP AND PERFORMANCE PROGRAMME, WAS LAUNCHED REGIONAL FACILITIES AUCKLAND (RFA) WAS ESTABLISHED
2011	THE EDGE BECAME ONE OF THE FIRST ARTS ORGANISATIONS IN NEW ZEALAND TO IMPLEMENT AN ARTS ACCESS PROGRAMME DIGITAL ART LIVE WAS CREATED, IN PARTNERSHIP WITH AUCKLAND UNIVERSITY OF TECHNOLOGY
2012	THE ASB THEATRE, AOTEA CENTRE (NOW KIRI TE KANAWA THEATRE) WAS REFURBISHED
2013	THE EDGE’S STAFF TRAINING RESOURCE WAS RECOGNISED BY ENTERTAINMENT VENUES ASSOCIATION OF NEW ZEALAND

1989	CONSTRUCTION OF THE AOTEA CENTRE IS COMPLETED
1997	THE EDGE BRAND WAS CREATED
1999	THE EDGE SECURED MANAGEMENT OF THE AOTEA SQUARE
	THE CIVIC WAS RESTORED TO ITS FORMER GLORY
2004	THE CONVENTION WING OF THE AOTEA CENTRE WAS REFURBISHED
2005	THE EDGE UPGRADED ITS CLIENT BOOKINGS AND MANAGEMENT SYSTEM
2007	THE EDGE INTERNATIONAL ARTS SEASON WAS LAUNCHED
2009	THE AUCKLAND FRINGE FESTIVAL WAS DEVELOPED
2010	THE AOTEA SQUARE WAS REFURBISHED TO SUPPORT CROWDS UP TO 20,000 PEOPLE
	THE AUCKLAND TOWN HALL ORGAN WAS RESTORED
	PICK & MIX, A FREE WORKSHOP AND PERFORMANCE PROGRAMME, WAS LAUNCHED
	REGIONAL FACILITIES AUCKLAND (RFA) WAS ESTABLISHED
2011	THE EDGE BECAME ONE OF THE FIRST ARTS ORGANISATIONS IN NEW ZEALAND TO IMPLEMENT AN ARTS ACCESS PROGRAMME
	DIGITAL ART LIVE WAS CREATED, IN PARTNERSHIP WITH AUCKLAND UNIVERSITY OF TECHNOLOGY
2012	THE ASB THEATRE, AOTEA CENTRE (NOW KIRI TE KANAWA THEATRE) WAS REFURBISHED
2013	THE EDGE’S STAFF TRAINING RESOURCE WAS RECOGNISED BY ENTERTAINMENT VENUES ASSOCIATION OF NEW ZEALAND





AUCKLAND LIVE

THE TRANSFORMATION OF ARTS AND CULTURE IN TĀMAKI MAKĀURAU

1989	CONSTRUCTION OF THE AOTEA CENTRE IS COMPLETED
1997	THE EDGE BRAND WAS CREATED
1999	THE EDGE SECURED MANAGEMENT OF THE AOTEA SQUARE
	THE CIVIC WAS RESTORED TO ITS FORMER GLORY
2004	THE CONVENTION WING OF THE AOTEA CENTRE WAS REFURBISHED
2005	THE EDGE UPGRADED ITS CLIENT BOOKINGS AND MANAGEMENT SYSTEM
2007	THE EDGE INTERNATIONAL ARTS SEASON WAS LAUNCHED
2009	THE AUCKLAND FRINGE FESTIVAL WAS DEVELOPED
2010	THE AOTEA SQUARE WAS REFURBISHED TO SUPPORT CROWDS UP TO 20,000 PEOPLE
	THE AUCKLAND TOWN HALL ORGAN WAS RESTORED
	PICK & MIX, A FREE WORKSHOP AND PERFORMANCE PROGRAMME, WAS LAUNCHED
	REGIONAL FACILITIES AUCKLAND (RFA) WAS ESTABLISHED
2011	THE EDGE BECAME ONE OF THE FIRST ARTS ORGANISATIONS IN NEW ZEALAND TO IMPLEMENT AN ARTS ACCESS PROGRAMME
	DIGITAL ART LIVE WAS CREATED, IN PARTNERSHIP WITH AUCKLAND UNIVERSITY OF TECHNOLOGY
2012	THE ASB THEATRE, AOTEA CENTRE (NOW KIRI TE KANAWA THEATRE) WAS REFURBISHED
2013	THE EDGE’S STAFF TRAINING RESOURCE WAS RECOGNISED BY ENTERTAINMENT VENUES ASSOCIATION OF NEW ZEALAND



1989	CONSTRUCTION OF THE AOTEA CENTRE IS COMPLETED
1997	THE EDGE BRAND WAS CREATED
1999	THE EDGE SECURED MANAGEMENT OF THE AOTEA SQUARE  THE CIVIC WAS RESTORED TO ITS FORMER GLORY
2004	THE CONVENTION WING OF THE AOTEA CENTRE WAS REFURBISHED
2005	THE EDGE UPGRADED ITS CLIENT BOOKINGS AND MANAGEMENT SYSTEM
2007	THE EDGE INTERNATIONAL ARTS SEASON WAS LAUNCHED
2009	THE AUCKLAND FRINGE FESTIVAL WAS DEVELOPED
2010	THE AOTEA SQUARE WAS REFURBISHED TO SUPPORT CROWDS UP TO 20,000 PEOPLE  THE AUCKLAND TOWN HALL ORGAN WAS RESTORED  PICK & MIX, A FREE WORKSHOP AND PERFORMANCE PROGRAMME, WAS LAUNCHED  REGIONAL FACILITIES AUCKLAND (RFA) WAS ESTABLISHED
2011	THE EDGE BECAME ONE OF THE FIRST ARTS ORGANISATIONS IN NEW ZEALAND TO IMPLEMENT AN ARTS ACCESS PROGRAMME  DIGITAL ART LIVE WAS CREATED, IN PARTNERSHIP WITH AUCKLAND UNIVERSITY OF TECHNOLOGY
2012	THE ASB THEATRE, AOTEA CENTRE (NOW KIRI TE KANAWA THEATRE) WAS REFURBISHED
2013	THE EDGE’S STAFF TRAINING RESOURCE WAS RECOGNISED BY ENTERTAINMENT VENUES ASSOCIATION OF NEW ZEALAND

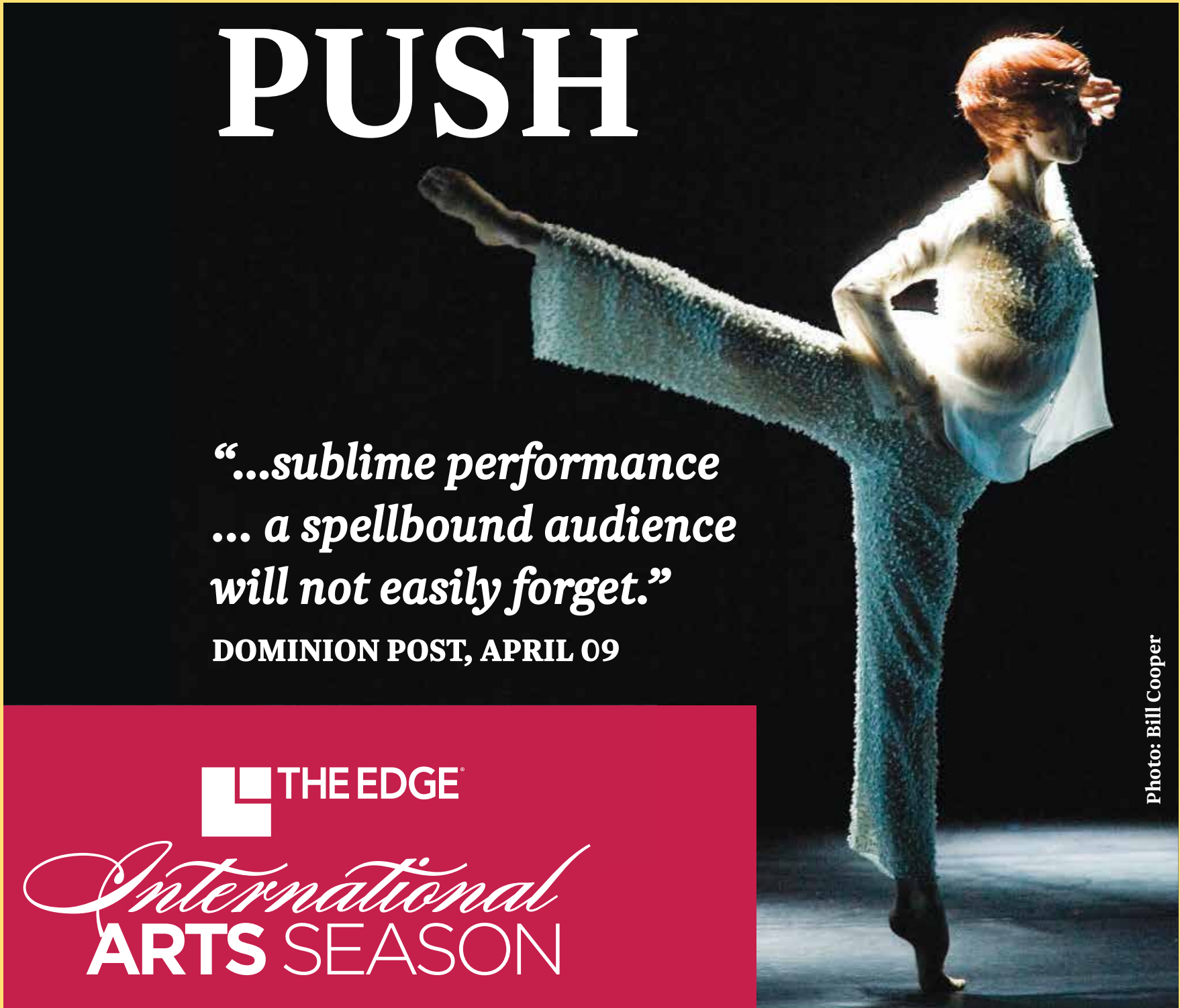


1989	CONSTRUCTION OF THE AOTEA CENTRE IS COMPLETED
1997	THE EDGE BRAND WAS CREATED
1999	THE EDGE SECURED MANAGEMENT OF THE AOTEA SQUARE
	THE CIVIC WAS RESTORED TO ITS FORMER GLORY
2004	THE CONVENTION WING OF THE AOTEA CENTRE WAS REFURBISHED
2005	THE EDGE UPGRADED ITS CLIENT BOOKINGS AND MANAGEMENT SYSTEM
2007	THE EDGE INTERNATIONAL ARTS SEASON WAS LAUNCHED
2009	THE AUCKLAND FRINGE FESTIVAL WAS DEVELOPED
2010	THE AOTEA SQUARE WAS REFURBISHED TO SUPPORT CROWDS UP TO 20,000 PEOPLE
	THE AUCKLAND TOWN HALL ORGAN WAS RESTORED
	PICK & MIX, A FREE WORKSHOP AND PERFORMANCE PROGRAMME, WAS LAUNCHED
	REGIONAL FACILITIES AUCKLAND (RFA) WAS ESTABLISHED
2011	THE EDGE BECAME ONE OF THE FIRST ARTS ORGANISATIONS IN NEW ZEALAND TO IMPLEMENT AN ARTS ACCESS PROGRAMME
	DIGITAL ART LIVE WAS CREATED, IN PARTNERSHIP WITH AUCKLAND UNIVERSITY OF TECHNOLOGY
2012	THE ASB THEATRE, AOTEA CENTRE (NOW KIRI TE KANAWA THEATRE) WAS REFURBISHED
2013	THE EDGE’S STAFF TRAINING RESOURCE WAS RECOGNISED BY ENTERTAINMENT VENUES ASSOCIATION OF NEW ZEALAND

AUCKLAND LIVE

THE TRANSFORMATION OF ARTS AND CULTURE IN TĀMAKI MAKAUURAU

1989	CONSTRUCTION OF THE AOTEA CENTRE IS COMPLETED
1997	THE EDGE BRAND WAS CREATED
1999	THE EDGE SECURED MANAGEMENT OF THE AOTEA SQUARE
	THE CIVIC WAS RESTORED TO ITS FORMER GLORY
2004	THE CONVENTION WING OF THE AOTEA CENTRE WAS REFURBISHED
2005	THE EDGE UPGRADED ITS CLIENT BOOKINGS AND MANAGEMENT SYSTEM
2007	THE EDGE INTERNATIONAL ARTS SEASON WAS LAUNCHED
2009	THE AUCKLAND FRINGE FESTIVAL WAS DEVELOPED
2010	THE AOTEA SQUARE WAS REFURBISHED TO SUPPORT CROWDS UP TO 20,000 PEOPLE
	THE AUCKLAND TOWN HALL ORGAN WAS RESTORED
	PICK & MIX, A FREE WORKSHOP AND PERFORMANCE PROGRAMME, WAS LAUNCHED
	REGIONAL FACILITIES AUCKLAND (RFA) WAS ESTABLISHED
2011	THE EDGE BECAME ONE OF THE FIRST ARTS ORGANISATIONS IN NEW ZEALAND TO IMPLEMENT AN ARTS ACCESS PROGRAMME
	DIGITAL ART LIVE WAS CREATED, IN PARTNERSHIP WITH AUCKLAND UNIVERSITY OF TECHNOLOGY
2012	THE ASB THEATRE, AOTEA CENTRE (NOW KIRI TE KANAWA THEATRE) WAS REFURBISHED
2013	THE EDGE’S STAFF TRAINING RESOURCE WAS RECOGNISED BY ENTERTAINMENT VENUES ASSOCIATION OF NEW ZEALAND



1989	CONSTRUCTION OF THE AOTEA CENTRE IS COMPLETED
1997	THE EDGE BRAND WAS CREATED
1999	THE EDGE SECURED MANAGEMENT OF THE AOTEA SQUARE
	THE CIVIC WAS RESTORED TO ITS FORMER GLORY
2004	THE CONVENTION WING OF THE AOTEA CENTRE WAS REFURBISHED
2005	THE EDGE UPGRADED ITS CLIENT BOOKINGS AND MANAGEMENT SYSTEM
2007	THE EDGE INTERNATIONAL ARTS SEASON WAS LAUNCHED
2009	THE AUCKLAND FRINGE FESTIVAL WAS DEVELOPED
2010	THE AOTEA SQUARE WAS REFURBISHED TO SUPPORT CROWDS UP TO 20,000 PEOPLE
	THE AUCKLAND TOWN HALL ORGAN WAS RESTORED
	PICK & MIX, A FREE WORKSHOP AND PERFORMANCE PROGRAMME, WAS LAUNCHED
	REGIONAL FACILITIES AUCKLAND (RFA) WAS ESTABLISHED
2011	THE EDGE BECAME ONE OF THE FIRST ARTS ORGANISATIONS IN NEW ZEALAND TO IMPLEMENT AN ARTS ACCESS PROGRAMME
	DIGITAL ART LIVE WAS CREATED, IN PARTNERSHIP WITH AUCKLAND UNIVERSITY OF TECHNOLOGY
2012	THE ASB THEATRE, AOTEA CENTRE (NOW KIRI TE KANAWA THEATRE) WAS REFURBISHED
2013	THE EDGE’S STAFF TRAINING RESOURCE WAS RECOGNISED BY ENTERTAINMENT VENUES ASSOCIATION OF NEW ZEALAND



AUCKLAND LIVE

THE TRANSFORMATION OF ARTS AND CULTURE IN TĀMAKI MAKĀURAU

1989	CONSTRUCTION OF THE AOTEA CENTRE IS COMPLETED
1997	THE EDGE BRAND WAS CREATED
1999	THE EDGE SECURED MANAGEMENT OF THE AOTEA SQUARE
	THE CIVIC WAS RESTORED TO ITS FORMER GLORY
2004	THE CONVENTION WING OF THE AOTEA CENTRE WAS REFURBISHED
2005	THE EDGE UPGRADED ITS CLIENT BOOKINGS AND MANAGEMENT SYSTEM
2007	THE EDGE INTERNATIONAL ARTS SEASON WAS LAUNCHED
2009	THE AUCKLAND FRINGE FESTIVAL WAS DEVELOPED
2010	THE AOTEA SQUARE WAS REFURBISHED TO SUPPORT CROWDS UP TO 20,000 PEOPLE
	THE AUCKLAND TOWN HALL ORGAN WAS RESTORED
	PICK & MIX, A FREE WORKSHOP AND PERFORMANCE PROGRAMME, WAS LAUNCHED
	REGIONAL FACILITIES AUCKLAND (RFA) WAS ESTABLISHED
2011	THE EDGE BECAME ONE OF THE FIRST ARTS ORGANISATIONS IN NEW ZEALAND TO IMPLEMENT AN ARTS ACCESS PROGRAMME
	DIGITAL ART LIVE WAS CREATED, IN PARTNERSHIP WITH AUCKLAND UNIVERSITY OF TECHNOLOGY
2012	THE ASB THEATRE, AOTEA CENTRE (NOW KIRI TE KANAWA THEATRE) WAS REFURBISHED
2013	THE EDGE’S STAFF TRAINING RESOURCE WAS RECOGNISED BY ENTERTAINMENT VENUES ASSOCIATION OF NEW ZEALAND





AUCKLAND LIVE

THE TRANSFORMATION OF ARTS AND CULTURE IN TĀMAKI MAKĀURAU

1989	CONSTRUCTION OF THE AOTEA CENTRE IS COMPLETED
1997	THE EDGE BRAND WAS CREATED
1999	THE EDGE SECURED MANAGEMENT OF THE AOTEA SQUARE
	THE CIVIC WAS RESTORED TO ITS FORMER GLORY
2004	THE CONVENTION WING OF THE AOTEA CENTRE WAS REFURBISHED
2005	THE EDGE UPGRADED ITS CLIENT BOOKINGS AND MANAGEMENT SYSTEM
2007	THE EDGE INTERNATIONAL ARTS SEASON WAS LAUNCHED
2009	THE AUCKLAND FRINGE FESTIVAL WAS DEVELOPED
2010	THE AOTEA SQUARE WAS REFURBISHED TO SUPPORT CROWDS UP TO 20,000 PEOPLE
	THE AUCKLAND TOWN HALL ORGAN WAS RESTORED
	PICK & MIX, A FREE WORKSHOP AND PERFORMANCE PROGRAMME, WAS LAUNCHED
	REGIONAL FACILITIES AUCKLAND (RFA) WAS ESTABLISHED
2011	THE EDGE BECAME ONE OF THE FIRST ARTS ORGANISATIONS IN NEW ZEALAND TO IMPLEMENT AN ARTS ACCESS PROGRAMME
	DIGITAL ART LIVE WAS CREATED, IN PARTNERSHIP WITH AUCKLAND UNIVERSITY OF TECHNOLOGY
2012	THE ASB THEATRE, AOTEA CENTRE (NOW KIRI TE KANAWA THEATRE) WAS REFURBISHED
2013	THE EDGE’S STAFF TRAINING RESOURCE WAS RECOGNISED BY ENTERTAINMENT VENUES ASSOCIATION OF NEW ZEALAND





AUCKLAND LIVE

THE TRANSFORMATION OF ARTS AND CULTURE IN TĀMAKI MAKĀURAU

1989	CONSTRUCTION OF THE AOTEA CENTRE IS COMPLETED
1997	THE EDGE BRAND WAS CREATED
1999	THE EDGE SECURED MANAGEMENT OF THE AOTEA SQUARE
	THE CIVIC WAS RESTORED TO ITS FORMER GLORY
2004	THE CONVENTION WING OF THE AOTEA CENTRE WAS REFURBISHED
2005	THE EDGE UPGRADED ITS CLIENT BOOKINGS AND MANAGEMENT SYSTEM
2007	THE EDGE INTERNATIONAL ARTS SEASON WAS LAUNCHED
2009	THE AUCKLAND FRINGE FESTIVAL WAS DEVELOPED
2010	THE AOTEA SQUARE WAS REFURBISHED TO SUPPORT CROWDS UP TO 20,000 PEOPLE
	THE AUCKLAND TOWN HALL ORGAN WAS RESTORED
	PICK & MIX, A FREE WORKSHOP AND PERFORMANCE PROGRAMME, WAS LAUNCHED
	REGIONAL FACILITIES AUCKLAND (RFA) WAS ESTABLISHED
2011	THE EDGE BECAME ONE OF THE FIRST ARTS ORGANISATIONS IN NEW ZEALAND TO IMPLEMENT AN ARTS ACCESS PROGRAMME
	DIGITAL ART LIVE WAS CREATED, IN PARTNERSHIP WITH AUCKLAND UNIVERSITY OF TECHNOLOGY
2012	THE ASB THEATRE, AOTEA CENTRE (NOW KIRI TE KANAWA THEATRE) WAS REFURBISHED
2013	THE EDGE’S STAFF TRAINING RESOURCE WAS RECOGNISED BY ENTERTAINMENT VENUES ASSOCIATION OF NEW ZEALAND





AUCKLAND LIVE

THE TRANSFORMATION OF ARTS AND CULTURE IN TĀMAKI MAKĀURAU

1989	CONSTRUCTION OF THE AOTEA CENTRE IS COMPLETED
1997	THE EDGE BRAND WAS CREATED
1999	THE EDGE SECURED MANAGEMENT OF THE AOTEA SQUARE
	THE CIVIC WAS RESTORED TO ITS FORMER GLORY
2004	THE CONVENTION WING OF THE AOTEA CENTRE WAS REFURBISHED
2005	THE EDGE UPGRADED ITS CLIENT BOOKINGS AND MANAGEMENT SYSTEM
2007	THE EDGE INTERNATIONAL ARTS SEASON WAS LAUNCHED
2009	THE AUCKLAND FRINGE FESTIVAL WAS DEVELOPED
2010	THE AOTEA SQUARE WAS REFURBISHED TO SUPPORT CROWDS UP TO 20,000 PEOPLE
	THE AUCKLAND TOWN HALL ORGAN WAS RESTORED
	PICK & MIX, A FREE WORKSHOP AND PERFORMANCE PROGRAMME, WAS LAUNCHED
	REGIONAL FACILITIES AUCKLAND (RFA) WAS ESTABLISHED
2011	THE EDGE BECAME ONE OF THE FIRST ARTS ORGANISATIONS IN NEW ZEALAND TO IMPLEMENT AN ARTS ACCESS PROGRAMME
	DIGITAL ART LIVE WAS CREATED, IN PARTNERSHIP WITH AUCKLAND UNIVERSITY OF TECHNOLOGY
2012	THE ASB THEATRE, AOTEA CENTRE (NOW KIRI TE KANAWA THEATRE) WAS REFURBISHED
2013	THE EDGE’S STAFF TRAINING RESOURCE WAS RECOGNISED BY ENTERTAINMENT VENUES ASSOCIATION OF NEW ZEALAND





AUCKLAND LIVE

THE TRANSFORMATION OF ARTS AND CULTURE IN TĀMAKI MAKĀURAU

1989	CONSTRUCTION OF THE AOTEA CENTRE IS COMPLETED
1997	THE EDGE BRAND WAS CREATED
1999	THE EDGE SECURED MANAGEMENT OF THE AOTEA SQUARE
	THE CIVIC WAS RESTORED TO ITS FORMER GLORY
2004	THE CONVENTION WING OF THE AOTEA CENTRE WAS REFURBISHED
2005	THE EDGE UPGRADED ITS CLIENT BOOKINGS AND MANAGEMENT SYSTEM
2007	THE EDGE INTERNATIONAL ARTS SEASON WAS LAUNCHED
2009	THE AUCKLAND FRINGE FESTIVAL WAS DEVELOPED
2010	THE AOTEA SQUARE WAS REFURBISHED TO SUPPORT CROWDS UP TO 20,000 PEOPLE
	THE AUCKLAND TOWN HALL ORGAN WAS RESTORED
	PICK & MIX, A FREE WORKSHOP AND PERFORMANCE PROGRAMME, WAS LAUNCHED
	REGIONAL FACILITIES AUCKLAND (RFA) WAS ESTABLISHED
2011	THE EDGE BECAME ONE OF THE FIRST ARTS ORGANISATIONS IN NEW ZEALAND TO IMPLEMENT AN ARTS ACCESS PROGRAMME
	DIGITAL ART LIVE WAS CREATED, IN PARTNERSHIP WITH AUCKLAND UNIVERSITY OF TECHNOLOGY
2012	THE ASB THEATRE, AOTEA CENTRE (NOW KIRI TE KANAWA THEATRE) WAS REFURBISHED
2013	THE EDGE’S STAFF TRAINING RESOURCE WAS RECOGNISED BY ENTERTAINMENT VENUES ASSOCIATION OF NEW ZEALAND



AUCKLAND LIVE

THE TRANSFORMATION OF ARTS AND CULTURE IN TĀMAKI MAKĀURAU

1989	CONSTRUCTION OF THE AOTEA CENTRE IS COMPLETED
1997	THE EDGE BRAND WAS CREATED
1999	THE EDGE SECURED MANAGEMENT OF THE AOTEA SQUARE
	THE CIVIC WAS RESTORED TO ITS FORMER GLORY
2004	THE CONVENTION WING OF THE AOTEA CENTRE WAS REFURBISHED
2005	THE EDGE UPGRADED ITS CLIENT BOOKINGS AND MANAGEMENT SYSTEM
2007	THE EDGE INTERNATIONAL ARTS SEASON WAS LAUNCHED
2009	THE AUCKLAND FRINGE FESTIVAL WAS DEVELOPED
2010	THE AOTEA SQUARE WAS REFURBISHED TO SUPPORT CROWDS UP TO 20,000 PEOPLE
	THE AUCKLAND TOWN HALL ORGAN WAS RESTORED
	PICK & MIX, A FREE WORKSHOP AND PERFORMANCE PROGRAMME, WAS LAUNCHED
	REGIONAL FACILITIES AUCKLAND (RFA) WAS ESTABLISHED
2011	THE EDGE BECAME ONE OF THE FIRST ARTS ORGANISATIONS IN NEW ZEALAND TO IMPLEMENT AN ARTS ACCESS PROGRAMME
	DIGITAL ART LIVE WAS CREATED, IN PARTNERSHIP WITH AUCKLAND UNIVERSITY OF TECHNOLOGY
2012	THE ASB THEATRE, AOTEA CENTRE (NOW KIRI TE KANAWA THEATRE) WAS REFURBISHED
2013	THE EDGE’S STAFF TRAINING RESOURCE WAS RECOGNISED BY ENTERTAINMENT VENUES ASSOCIATION OF NEW ZEALAND





AUCKLAND LIVE

THE TRANSFORMATION OF ARTS AND CULTURE IN TĀMAKI MAKĀURAU

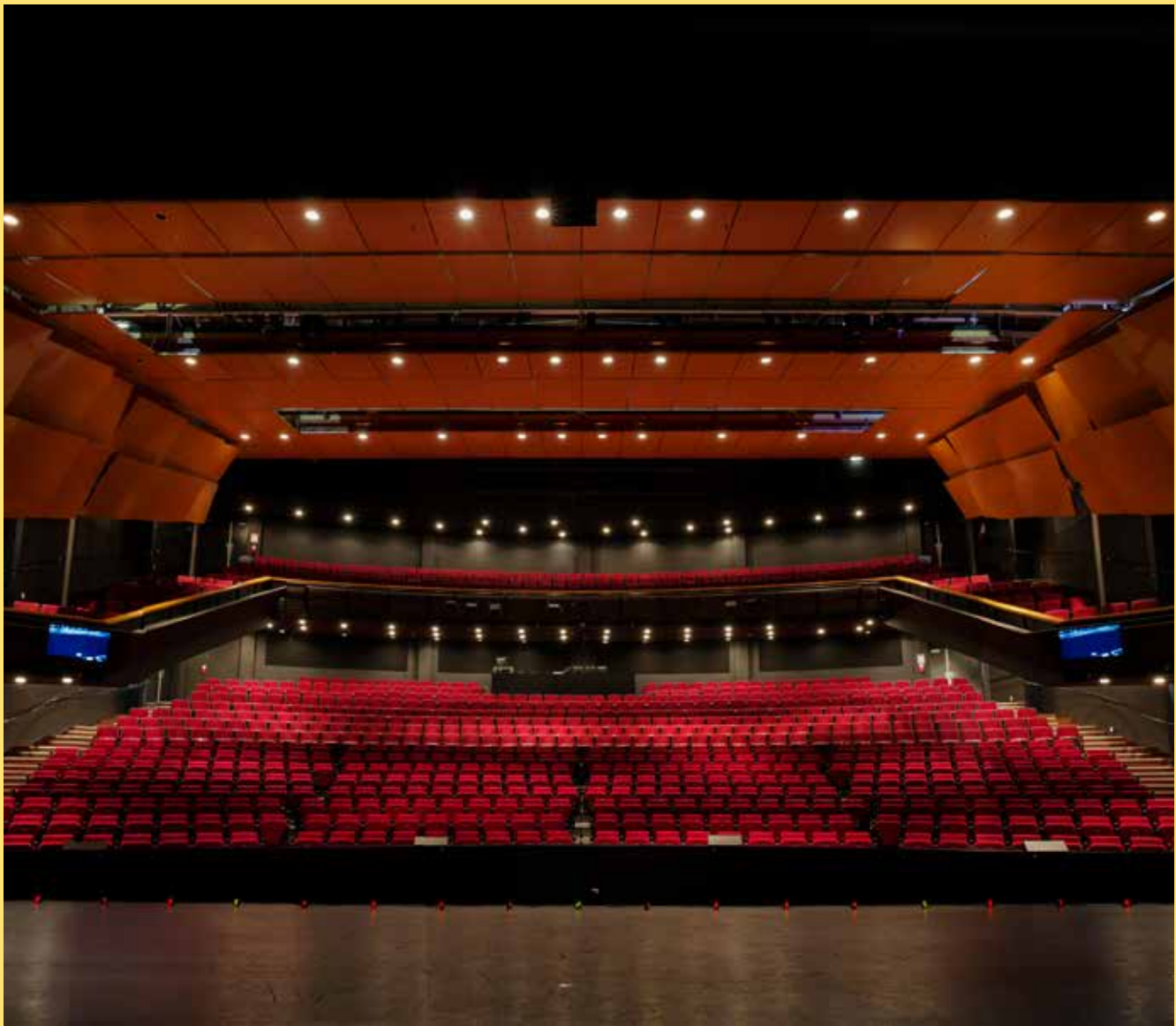
1989	CONSTRUCTION OF THE AOTEA CENTRE IS COMPLETED
1997	THE EDGE BRAND WAS CREATED
1999	THE EDGE SECURED MANAGEMENT OF THE AOTEA SQUARE
	THE CIVIC WAS RESTORED TO ITS FORMER GLORY
2004	THE CONVENTION WING OF THE AOTEA CENTRE WAS REFURBISHED
2005	THE EDGE UPGRADED ITS CLIENT BOOKINGS AND MANAGEMENT SYSTEM
2007	THE EDGE INTERNATIONAL ARTS SEASON WAS LAUNCHED
2009	THE AUCKLAND FRINGE FESTIVAL WAS DEVELOPED
2010	THE AOTEA SQUARE WAS REFURBISHED TO SUPPORT CROWDS UP TO 20,000 PEOPLE
	THE AUCKLAND TOWN HALL ORGAN WAS RESTORED
	PICK & MIX, A FREE WORKSHOP AND PERFORMANCE PROGRAMME, WAS LAUNCHED
	REGIONAL FACILITIES AUCKLAND (RFA) WAS ESTABLISHED
2011	THE EDGE BECAME ONE OF THE FIRST ARTS ORGANISATIONS IN NEW ZEALAND TO IMPLEMENT AN ARTS ACCESS PROGRAMME
	DIGITAL ART LIVE WAS CREATED, IN PARTNERSHIP WITH AUCKLAND UNIVERSITY OF TECHNOLOGY
2012	THE ASB THEATRE, AOTEA CENTRE (NOW KIRI TE KANAWA THEATRE) WAS REFURBISHED
2013	THE EDGE’S STAFF TRAINING RESOURCE WAS RECOGNISED BY ENTERTAINMENT VENUES ASSOCIATION OF NEW ZEALAND



1989	CONSTRUCTION OF THE AOTEA CENTRE IS COMPLETED
1997	THE EDGE BRAND WAS CREATED
1999	THE EDGE SECURED MANAGEMENT OF THE AOTEA SQUARE
	THE CIVIC WAS RESTORED TO ITS FORMER GLORY
2004	THE CONVENTION WING OF THE AOTEA CENTRE WAS REFURBISHED
2005	THE EDGE UPGRADED ITS CLIENT BOOKINGS AND MANAGEMENT SYSTEM
2007	THE EDGE INTERNATIONAL ARTS SEASON WAS LAUNCHED
2009	THE AUCKLAND FRINGE FESTIVAL WAS DEVELOPED
2010	THE AOTEA SQUARE WAS REFURBISHED TO SUPPORT CROWDS UP TO 20,000 PEOPLE
	THE AUCKLAND TOWN HALL ORGAN WAS RESTORED
	PICK & MIX, A FREE WORKSHOP AND PERFORMANCE PROGRAMME, WAS LAUNCHED
	REGIONAL FACILITIES AUCKLAND (RFA) WAS ESTABLISHED
2011	THE EDGE BECAME ONE OF THE FIRST ARTS ORGANISATIONS IN NEW ZEALAND TO IMPLEMENT AN ARTS ACCESS PROGRAMME
	DIGITAL ART LIVE WAS CREATED, IN PARTNERSHIP WITH AUCKLAND UNIVERSITY OF TECHNOLOGY
2012	THE ASB THEATRE, AOTEA CENTRE (NOW KIRI TE KANAWA THEATRE) WAS REFURBISHED
2013	THE EDGE’S STAFF TRAINING RESOURCE WAS RECOGNISED BY ENTERTAINMENT VENUES ASSOCIATION OF NEW ZEALAND

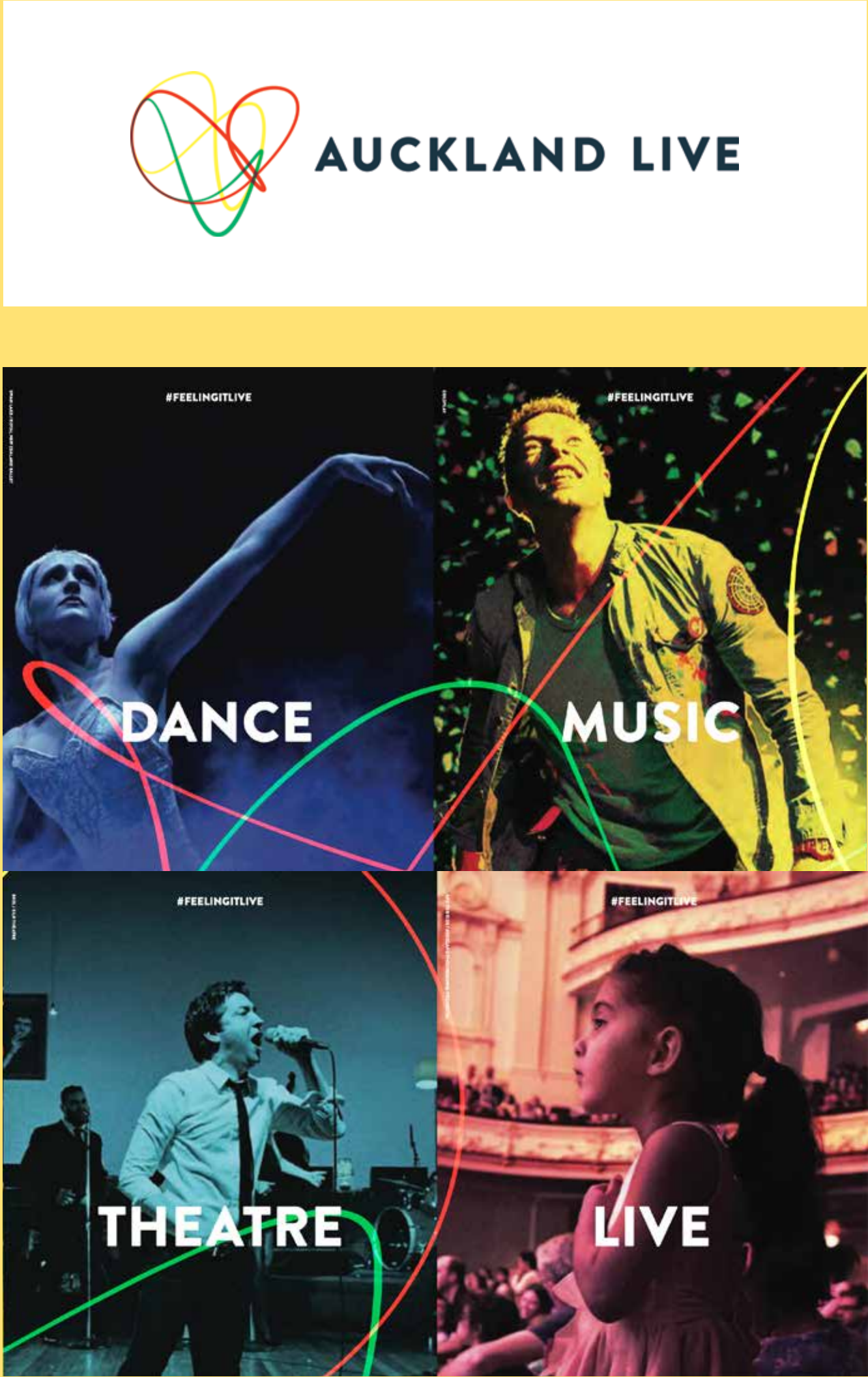


2014	<div>THE EDGE SECURED THE MANAGEMENT OF THE BRUCE MASON CENTRE, TAKAPUNA</div> <div>THE EDGE REBRANDED AS AUCKLAND LIVE</div> <div>AUCKLAND LIVE WAS A FINALIST IN THE DESIGNERS INSTITUTE OF NEW ZEALAND BEST DESIGN AWARDS</div> <div>AUCKLAND LIVE CABARET SEASON WAS LAUNCHED</div> <div>AUCKLAND LIVE SUMMER IN THE SQUARE WAS ESTABLISHED</div> <div>ACTIVATION OF THE AOTEA SQUARE INCREASED</div> <div>VIRTUAL TOURS OF ALL OUR VENUES WERE ADDED TO AUCKLANDLIVE.CO.NZ</div>
2015	<div>AUCKLAND LIVE WAS AWARDED THE ARTS ACCESS CREATIVE NEW ZEALAND ARTS FOR ALL AWARD</div> <div>PICK AND MIX PERFORMANCES EXPANDED TO BRUCE MASON CENTRE AND MANGERE ARTS CENTRE</div>
2016	<div>AUCKLAND PHILHARMONIA ORCHESTRA (APO) TOOK UP RESIDENCE IN THE AUCKLAND TOWN HALL</div> <div>A DIGITAL DATA PROJECTOR WAS RETRO FITTED INTO THE CIVIC</div> <div>AUCKLAND LIVE SECURED THE MANAGEMENT OF SHED 10 AND THE CLOUD, QUEENS WHARF</div> <div>PURAPURAWHETU WAS PERFORMED COMPLETELY IN TE REO MĀORI AT THE HERALD THEATRE</div> <div>AUCKLAND LIVE AND THE AUCKLAND TOWN HALL TRUST AGREED TO GIFT FOUR FREE ORGAN CONCERTS PER YEAR FOR AUCKLANDERS</div>





2014	<p>THE EDGE SECURED THE MANAGEMENT OF THE BRUCE MASON CENTRE, TAKAPUNA</p> <p>THE EDGE REBRANDED AS AUCKLAND LIVE</p> <p>AUCKLAND LIVE WAS A FINALIST IN THE DESIGNERS INSTITUTE OF NEW ZEALAND BEST DESIGN AWARDS</p> <p>AUCKLAND LIVE CABARET SEASON WAS LAUNCHED</p> <p>AUCKLAND LIVE SUMMER IN THE SQUARE WAS ESTABLISHED</p> <p>ACTIVATION OF THE AOTEA SQUARE INCREASED</p> <p>VIRTUAL TOURS OF ALL OUR VENUES WERE ADDED TO AUCKLANDLIVE.CO.NZ</p>
2015	<p>AUCKLAND LIVE WAS AWARDED THE ARTS ACCESS CREATIVE NEW ZEALAND ARTS FOR ALL AWARD</p> <p>PICK AND MIX PERFORMANCES EXPANDED TO BRUCE MASON CENTRE AND MANGERE ARTS CENTRE</p>
2016	<p>AUCKLAND PHILHARMONIA ORCHESTRA (APO) TOOK UP RESIDENCE IN THE AUCKLAND TOWN HALL</p> <p>A DIGITAL DATA PROJECTOR WAS RETRO FITTED INTO THE CIVIC</p> <p>AUCKLAND LIVE SECURED THE MANAGEMENT OF SHED 10 AND THE CLOUD, QUEENS WHARF</p> <p>PURAPURAWHETU WAS PERFORMED COMPLETELY IN TE REO MĀORI AT THE HERALD THEATRE</p> <p>AUCKLAND LIVE AND THE AUCKLAND TOWN HALL TRUST AGREED TO GIFT FOUR FREE ORGAN CONCERTS PER YEAR FOR AUCKLANDERS</p>





AUCKLAND LIVE TIMELINE

THE TRANSFORMATION OF ARTS AND CULTURE IN TĀMAKI MAKAUURAU

2014	<div>THE EDGE SECURED THE MANAGEMENT OF THE BRUCE MASON CENTRE, TAKAPUNA</div> <div>THE EDGE REBRANDED AS AUCKLAND LIVE</div> <div>AUCKLAND LIVE WAS A FINALIST IN THE DESIGNERS INSTITUTE OF NEW ZEALAND BEST DESIGN AWARDS</div> <div>AUCKLAND LIVE CABARET SEASON WAS LAUNCHED</div> <div>AUCKLAND LIVE SUMMER IN THE SQUARE WAS ESTABLISHED</div> <div>ACTIVATION OF THE AOTEA SQUARE INCREASED</div> <div>VIRTUAL TOURS OF ALL OUR VENUES WERE ADDED TO AUCKLANDLIVE.CO.NZ</div>
2015	<div>AUCKLAND LIVE WAS AWARDED THE ARTS ACCESS CREATIVE NEW ZEALAND ARTS FOR ALL AWARD</div> <div>PICK AND MIX PERFORMANCES EXPANDED TO BRUCE MASON CENTRE AND MANGERE ARTS CENTRE</div>
2016	<div>AUCKLAND PHILHARMONIA ORCHESTRA (APO) TOOK UP RESIDENCE IN THE AUCKLAND TOWN HALL</div> <div>A DIGITAL DATA PROJECTOR WAS RETRO FITTED INTO THE CIVIC</div> <div>AUCKLAND LIVE SECURED THE MANAGEMENT OF SHED 10 AND THE CLOUD, QUEENS WHARF</div> <div>PURAPURAWHETU WAS PERFORMED COMPLETELY IN TE REO MĀORI AT THE HERALD THEATRE</div> <div>AUCKLAND LIVE AND THE AUCKLAND TOWN HALL TRUST AGREED TO GIFT FOUR FREE ORGAN CONCERTS PER YEAR FOR AUCKLANDERS</div>





2014	THE EDGE SECURED THE MANAGEMENT OF THE BRUCE MASON CENTRE, TAKAPUNA
	THE EDGE REBRANDED AS AUCKLAND LIVE
	AUCKLAND LIVE WAS A FINALIST IN THE DESIGNERS INSTITUTE OF NEW ZEALAND BEST DESIGN AWARDS
	AUCKLAND LIVE CABARET SEASON WAS LAUNCHED
2015	AUCKLAND LIVE SUMMER IN THE SQUARE WAS ESTABLISHED
	ACTIVATION OF THE AOTEA SQUARE INCREASED
	VIRTUAL TOURS OF ALL OUR VENUES WERE ADDED TO AUCKLANDLIVE.CO.NZ
	AUCKLAND LIVE WAS AWARDED THE ARTS ACCESS CREATIVE NEW ZEALAND ARTS FOR ALL AWARD
2016	PICK AND MIX PERFORMANCES EXPANDED TO BRUCE MASON CENTRE AND MANGERE ARTS CENTRE
	AUCKLAND PHILHARMONIA ORCHESTRA (APO) TOOK UP RESIDENCE IN THE AUCKLAND TOWN HALL
	A DIGITAL DATA PROJECTOR WAS RETRO FITTED INTO THE CIVIC
	AUCKLAND LIVE SECURED THE MANAGEMENT OF SHED 10 AND THE CLOUD, QUEENS WHARF
	PURAPURAWHETU WAS PERFORMED COMPLETELY IN TE REO MĀORI AT THE HERALD THEATRE
	AUCKLAND LIVE AND THE AUCKLAND TOWN HALL TRUST AGREED TO GIFT FOUR FREE ORGAN CONCERTS PER YEAR FOR AUCKLANDERS





2014	<div>THE EDGE SECURED THE MANAGEMENT OF THE BRUCE MASON CENTRE, TAKAPUNA</div> <div>THE EDGE REBRANDED AS AUCKLAND LIVE</div> <div>AUCKLAND LIVE WAS A FINALIST IN THE DESIGNERS INSTITUTE OF NEW ZEALAND BEST DESIGN AWARDS</div> <div>AUCKLAND LIVE CABARET SEASON WAS LAUNCHED</div> <div>AUCKLAND LIVE SUMMER IN THE SQUARE WAS ESTABLISHED</div>
2015	<div>ACTIVATION OF THE AOTEA SQUARE INCREASED</div> <div>VIRTUAL TOURS OF ALL OUR VENUES WERE ADDED TO AUCKLANDLIVE.CO.NZ</div> <div>AUCKLAND LIVE WAS AWARDED THE ARTS ACCESS CREATIVE NEW ZEALAND ARTS FOR ALL AWARD</div> <div>PICK AND MIX PERFORMANCES EXPANDED TO BRUCE MASON CENTRE AND MANGERE ARTS CENTRE</div>
2016	<div>AUCKLAND PHILHARMONIA ORCHESTRA (APO) TOOK UP RESIDENCE IN THE AUCKLAND TOWN HALL</div> <div>A DIGITAL DATA PROJECTOR WAS RETRO FITTED INTO THE CIVIC</div> <div>AUCKLAND LIVE SECURED THE MANAGEMENT OF SHED 10 AND THE CLOUD, QUEENS WHARF</div> <div>PURAPURAWHETU WAS PERFORMED COMPLETELY IN TE REO MĀORI AT THE HERALD THEATRE</div> <div>AUCKLAND LIVE AND THE AUCKLAND TOWN HALL TRUST AGREED TO GIFT FOUR FREE ORGAN CONCERTS PER YEAR FOR AUCKLANDERS</div>

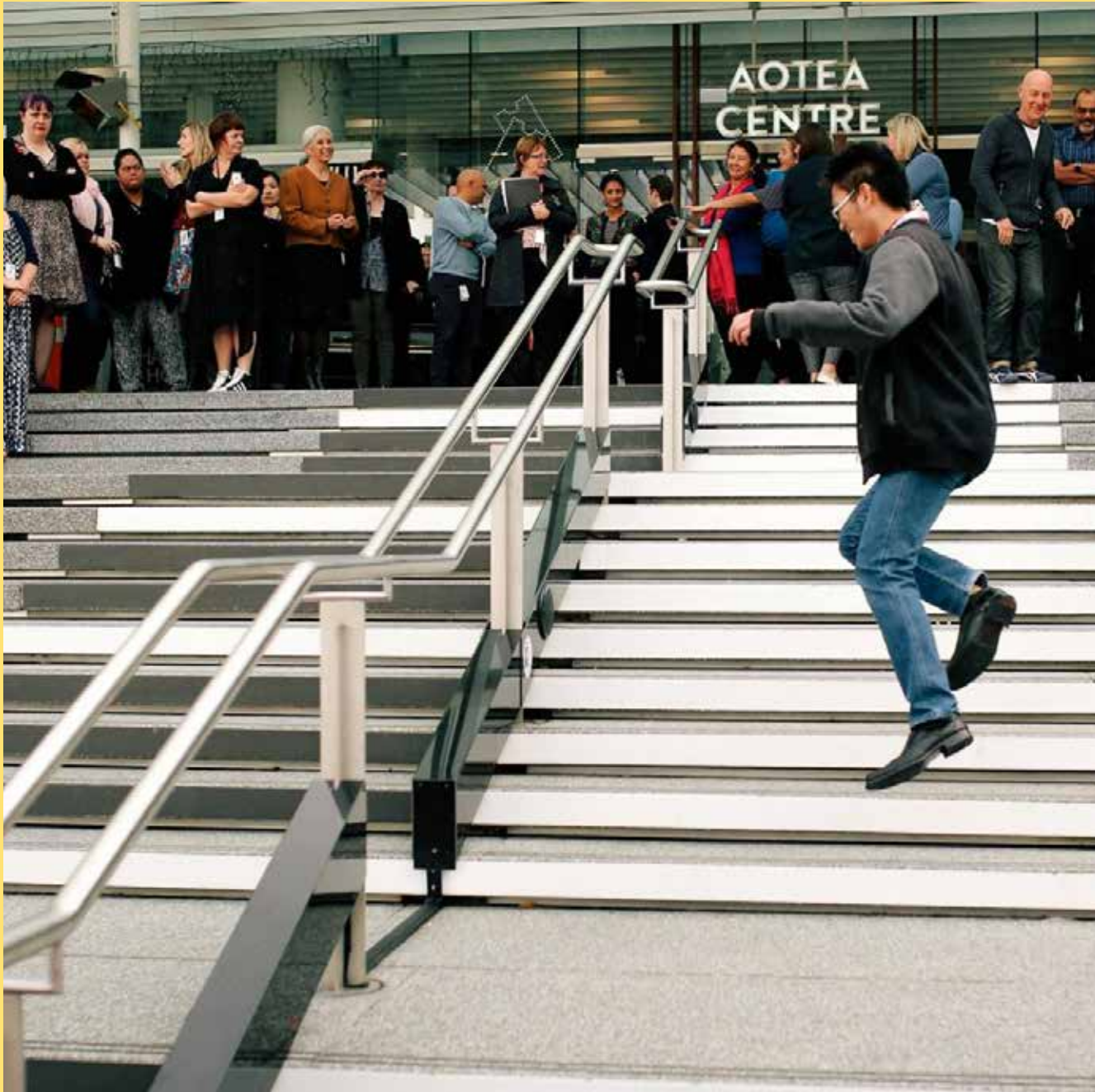




AUCKLAND LIVE TIMELINE

THE TRANSFORMATION OF ARTS AND CULTURE IN TĀMAKI MAKAUURAU

2014	<div>THE EDGE SECURED THE MANAGEMENT OF THE BRUCE MASON CENTRE, TAKAPUNA</div> <div>THE EDGE REBRANDED AS AUCKLAND LIVE</div> <div>AUCKLAND LIVE WAS A FINALIST IN THE DESIGNERS INSTITUTE OF NEW ZEALAND BEST DESIGN AWARDS</div> <div>AUCKLAND LIVE CABARET SEASON WAS LAUNCHED</div> <div>AUCKLAND LIVE SUMMER IN THE SQUARE WAS ESTABLISHED</div> <div>ACTIVATION OF THE AOTEA SQUARE INCREASED</div>
2015	<div>VIRTUAL TOURS OF ALL OUR VENUES WERE ADDED TO AUCKLANDLIVE.CO.NZ</div> <div>AUCKLAND LIVE WAS AWARDED THE ARTS ACCESS CREATIVE NEW ZEALAND ARTS FOR ALL AWARD</div> <div>PICK AND MIX PERFORMANCES EXPANDED TO BRUCE MASON CENTRE AND MANGERE ARTS CENTRE</div>
2016	<div>AUCKLAND PHILHARMONIA ORCHESTRA (APO) TOOK UP RESIDENCE IN THE AUCKLAND TOWN HALL</div> <div>A DIGITAL DATA PROJECTOR WAS RETRO FITTED INTO THE CIVIC</div> <div>AUCKLAND LIVE SECURED THE MANAGEMENT OF SHED 10 AND THE CLOUD, QUEENS WHARF</div> <div>PURAPURAWHETU WAS PERFORMED COMPLETELY IN TE REO MĀORI AT THE HERALD THEATRE</div> <div>AUCKLAND LIVE AND THE AUCKLAND TOWN HALL TRUST AGREED TO GIFT FOUR FREE ORGAN CONCERTS PER YEAR FOR AUCKLANDERS</div>

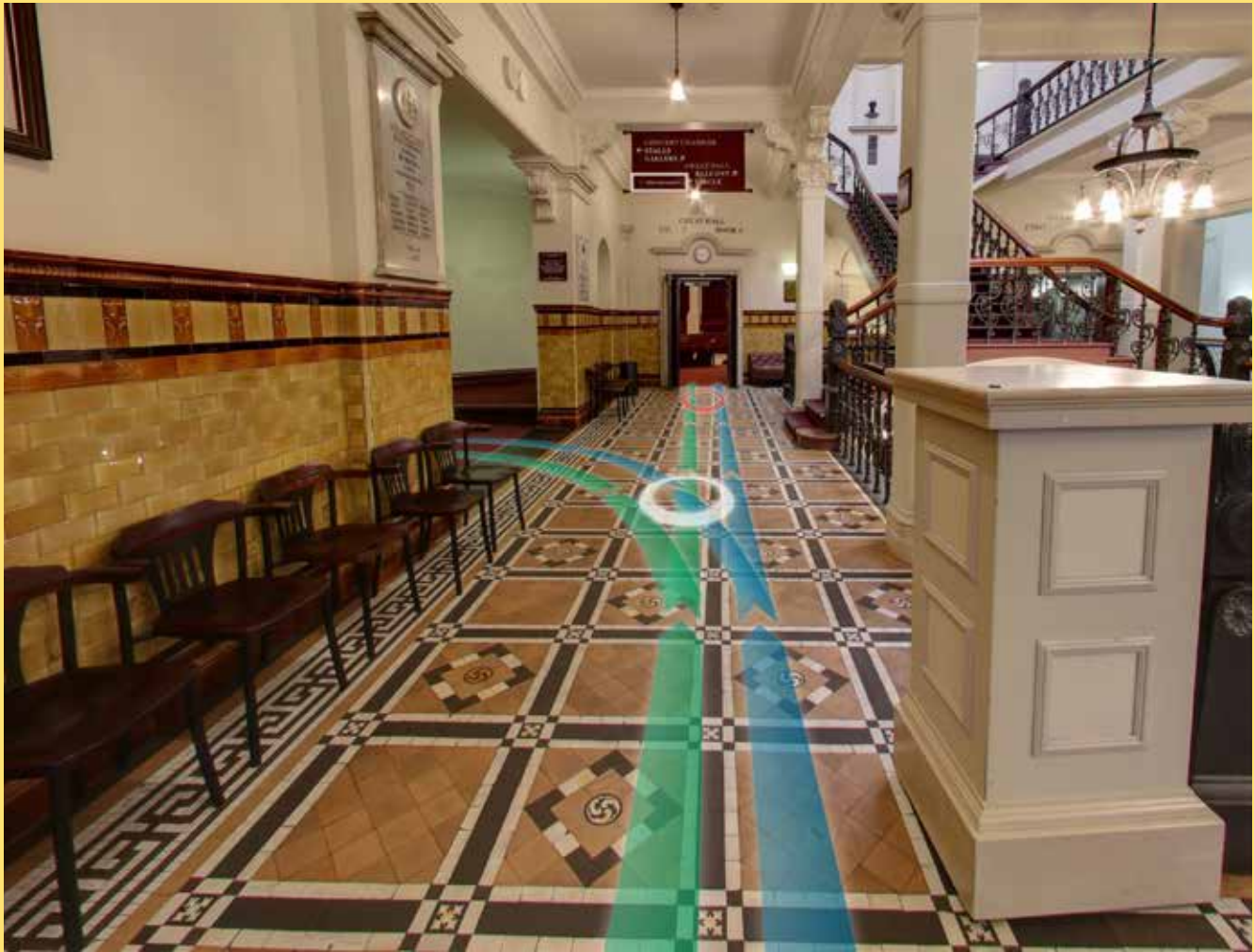
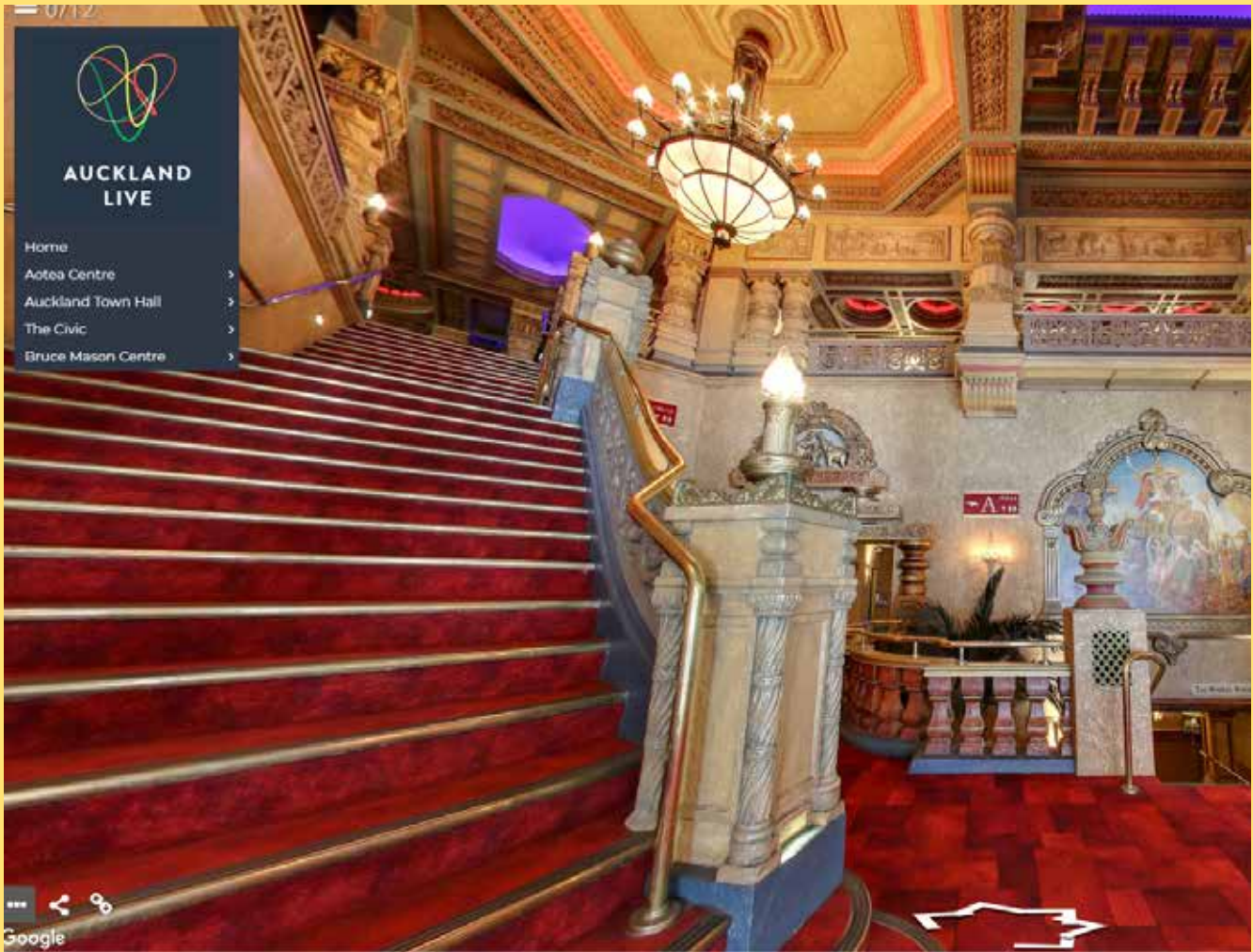




AUCKLAND LIVE TIMELINE

THE TRANSFORMATION OF ARTS AND CULTURE IN TĀMAKI MAKAUURAU

2014	<div>THE EDGE SECURED THE MANAGEMENT OF THE BRUCE MASON CENTRE, TAKAPUNA</div> <div>THE EDGE REBRANDED AS AUCKLAND LIVE</div> <div>AUCKLAND LIVE WAS A FINALIST IN THE DESIGNERS INSTITUTE OF NEW ZEALAND BEST DESIGN AWARDS</div> <div>AUCKLAND LIVE CABARET SEASON WAS LAUNCHED</div> <div>AUCKLAND LIVE SUMMER IN THE SQUARE WAS ESTABLISHED</div> <div>ACTIVATION OF THE AOTEA SQUARE INCREASED</div> <div>VIRTUAL TOURS OF ALL OUR VENUES WERE ADDED TO AUCKLANDLIVE.CO.NZ</div>
2015	<div>AUCKLAND LIVE WAS AWARDED THE ARTS ACCESS CREATIVE NEW ZEALAND ARTS FOR ALL AWARD</div> <div>PICK AND MIX PERFORMANCES EXPANDED TO BRUCE MASON CENTRE AND MANGERE ARTS CENTRE</div>
2016	<div>AUCKLAND PHILHARMONIA ORCHESTRA (APO) TOOK UP RESIDENCE IN THE AUCKLAND TOWN HALL</div> <div>A DIGITAL DATA PROJECTOR WAS RETRO FITTED INTO THE CIVIC</div> <div>AUCKLAND LIVE SECURED THE MANAGEMENT OF SHED 10 AND THE CLOUD, QUEENS WHARF</div> <div>PURAPURAWHETU WAS PERFORMED COMPLETELY IN TE REO MĀORI AT THE HERALD THEATRE</div> <div>AUCKLAND LIVE AND THE AUCKLAND TOWN HALL TRUST AGREED TO GIFT FOUR FREE ORGAN CONCERTS PER YEAR FOR AUCKLANDERS</div>





2014

THE EDGE SECURED THE MANAGEMENT OF THE BRUCE MASON CENTRE, TAKAPUNA

THE EDGE REBRANDED AS AUCKLAND LIVE

AUCKLAND LIVE WAS A FINALIST IN THE DESIGNERS INSTITUTE OF NEW ZEALAND BEST DESIGN AWARDS

AUCKLAND LIVE CABARET SEASON WAS LAUNCHED

AUCKLAND LIVE SUMMER IN THE SQUARE WAS ESTABLISHED

ACTIVATION OF THE AOTEA SQUARE INCREASED

VIRTUAL TOURS OF ALL OUR VENUES WERE ADDED TO AUCKLANDLIVE.CO.NZ

2015

AUCKLAND LIVE WAS AWARDED THE ARTS ACCESS CREATIVE NEW ZEALAND ARTS FOR ALL AWARD

2016

PICK AND MIX PERFORMANCES EXPANDED TO BRUCE MASON CENTRE AND MANGERE ARTS CENTRE

AUCKLAND PHILHARMONIA ORCHESTRA (APO) TOOK UP RESIDENCE IN THE AUCKLAND TOWN HALL

A DIGITAL DATA PROJECTOR WAS RETRO FITTED INTO THE CIVIC

AUCKLAND LIVE SECURED THE MANAGEMENT OF SHED 10 AND THE CLOUD, QUEENS WHARF

PURAPURAWHETU WAS PERFORMED COMPLETELY IN TE REO MĀORI AT THE HERALD THEATRE

AUCKLAND LIVE AND THE AUCKLAND TOWN HALL TRUST AGREED TO GIFT FOUR FREE ORGAN CONCERTS PER YEAR FOR AUCKLANDERS





2014	<div>THE EDGE SECURED THE MANAGEMENT OF THE BRUCE MASON CENTRE, TAKAPUNA</div> <div>THE EDGE REBRANDED AS AUCKLAND LIVE</div> <div>AUCKLAND LIVE WAS A FINALIST IN THE DESIGNERS INSTITUTE OF NEW ZEALAND BEST DESIGN AWARDS</div> <div>AUCKLAND LIVE CABARET SEASON WAS LAUNCHED</div> <div>AUCKLAND LIVE SUMMER IN THE SQUARE WAS ESTABLISHED</div> <div>ACTIVATION OF THE AOTEA SQUARE INCREASED</div> <div>VIRTUAL TOURS OF ALL OUR VENUES WERE ADDED TO AUCKLANDLIVE.CO.NZ</div>
2015	<div>AUCKLAND LIVE WAS AWARDED THE ARTS ACCESS CREATIVE NEW ZEALAND ARTS FOR ALL AWARD</div> <div>PICK AND MIX PERFORMANCES EXPANDED TO BRUCE MASON CENTRE AND MANGERE ARTS CENTRE</div>
2016	<div>AUCKLAND PHILHARMONIA ORCHESTRA (APO) TOOK UP RESIDENCE IN THE AUCKLAND TOWN HALL</div> <div>A DIGITAL DATA PROJECTOR WAS RETRO FITTED INTO THE CIVIC</div> <div>AUCKLAND LIVE SECURED THE MANAGEMENT OF SHED 10 AND THE CLOUD, QUEENS WHARF</div> <div>PURAPURAWHETU WAS PERFORMED COMPLETELY IN TE REO MĀORI AT THE HERALD THEATRE</div> <div>AUCKLAND LIVE AND THE AUCKLAND TOWN HALL TRUST AGREED TO GIFT FOUR FREE ORGAN CONCERTS PER YEAR FOR AUCKLANDERS</div>





AUCKLAND LIVE TIMELINE

THE TRANSFORMATION OF ARTS AND CULTURE IN TĀMAKI MAKĀURAU

2014	<div>THE EDGE SECURED THE MANAGEMENT OF THE BRUCE MASON CENTRE, TAKAPUNA</div> <div>THE EDGE REBRANDED AS AUCKLAND LIVE</div> <div>AUCKLAND LIVE WAS A FINALIST IN THE DESIGNERS INSTITUTE OF NEW ZEALAND BEST DESIGN AWARDS</div> <div>AUCKLAND LIVE CABARET SEASON WAS LAUNCHED</div> <div>AUCKLAND LIVE SUMMER IN THE SQUARE WAS ESTABLISHED</div> <div>ACTIVATION OF THE AOTEA SQUARE INCREASED</div> <div>VIRTUAL TOURS OF ALL OUR VENUES WERE ADDED TO AUCKLANDLIVE.CO.NZ</div>
2015	<div>AUCKLAND LIVE WAS AWARDED THE ARTS ACCESS CREATIVE NEW ZEALAND ARTS FOR ALL AWARD</div> <div>PICK AND MIX PERFORMANCES EXPANDED TO BRUCE MASON CENTRE AND MANGERE ARTS CENTRE</div>
2016	<div>AUCKLAND PHILHARMONIA ORCHESTRA (APO) TOOK UP RESIDENCE IN THE AUCKLAND TOWN HALL</div> <div>A DIGITAL DATA PROJECTOR WAS RETRO FITTED INTO THE CIVIC</div> <div>AUCKLAND LIVE SECURED THE MANAGEMENT OF SHED 10 AND THE CLOUD, QUEENS WHARF</div> <div>PURAPURAWHETU WAS PERFORMED COMPLETELY IN TE REO MĀORI AT THE HERALD THEATRE</div> <div>AUCKLAND LIVE AND THE AUCKLAND TOWN HALL TRUST AGREED TO GIFT FOUR FREE ORGAN CONCERTS PER YEAR FOR AUCKLANDERS</div>





2014	<div>THE EDGE SECURED THE MANAGEMENT OF THE BRUCE MASON CENTRE, TAKAPUNA</div> <div>THE EDGE REBRANDED AS AUCKLAND LIVE</div> <div>AUCKLAND LIVE WAS A FINALIST IN THE DESIGNERS INSTITUTE OF NEW ZEALAND BEST DESIGN AWARDS</div> <div>AUCKLAND LIVE CABARET SEASON WAS LAUNCHED</div> <div>AUCKLAND LIVE SUMMER IN THE SQUARE WAS ESTABLISHED</div> <div>ACTIVATION OF THE AOTEA SQUARE INCREASED</div> <div>VIRTUAL TOURS OF ALL OUR VENUES WERE ADDED TO AUCKLANDLIVE.CO.NZ</div>
2015	<div>AUCKLAND LIVE WAS AWARDED THE ARTS ACCESS CREATIVE NEW ZEALAND ARTS FOR ALL AWARD</div> <div>PICK AND MIX PERFORMANCES EXPANDED TO BRUCE MASON CENTRE AND MANGERE ARTS CENTRE</div>
2016	<div>AUCKLAND PHILHARMONIA ORCHESTRA (APO) TOOK UP RESIDENCE IN THE AUCKLAND TOWN HALL</div> <div>A DIGITAL DATA PROJECTOR WAS RETRO FITTED INTO THE CIVIC</div> <div>AUCKLAND LIVE SECURED THE MANAGEMENT OF SHED 10 AND THE CLOUD, QUEENS WHARF</div> <div>PURAPURAWHETU WAS PERFORMED COMPLETELY IN TE REO MĀORI AT THE HERALD THEATRE</div> <div>AUCKLAND LIVE AND THE AUCKLAND TOWN HALL TRUST AGREED TO GIFT FOUR FREE ORGAN CONCERTS PER YEAR FOR AUCKLANDERS</div>





# AUCKLAND LIVE TIMELINE THE TRANSFORMATION OF ARTS AND CULTURE IN TĀMAKI MAKĀURAU

2014	<p>THE EDGE SECURED THE MANAGEMENT OF THE BRUCE MASON CENTRE, TAKAPUNA</p> <p>THE EDGE REBRANDED AS AUCKLAND LIVE</p> <p>AUCKLAND LIVE WAS A FINALIST IN THE DESIGNERS INSTITUTE OF NEW ZEALAND BEST DESIGN AWARDS</p> <p>AUCKLAND LIVE CABARET SEASON WAS LAUNCHED</p> <p>AUCKLAND LIVE SUMMER IN THE SQUARE WAS ESTABLISHED</p> <p>ACTIVATION OF THE AOTEA SQUARE INCREASED</p> <p>VIRTUAL TOURS OF ALL OUR VENUES WERE ADDED TO AUCKLANDLIVE.CO.NZ</p>
2015	<p>AUCKLAND LIVE WAS AWARDED THE ARTS ACCESS CREATIVE NEW ZEALAND ARTS FOR ALL AWARD</p> <p>PICK AND MIX PERFORMANCES EXPANDED TO BRUCE MASON CENTRE AND MANGERE ARTS CENTRE</p>
2016	<p>AUCKLAND PHILHARMONIA ORCHESTRA (APO) TOOK UP RESIDENCE IN THE AUCKLAND TOWN HALL</p> <p>A DIGITAL DATA PROJECTOR WAS RETRO FITTED INTO THE CIVIC</p> <p>AUCKLAND LIVE SECURED THE MANAGEMENT OF SHED 10 AND THE CLOUD, QUEENS WHARF</p> <p>PURAPURAWHETU WAS PERFORMED COMPLETELY IN TE REO MĀORI AT THE HERALD THEATRE</p> <p>AUCKLAND LIVE AND THE AUCKLAND TOWN HALL TRUST AGREED TO GIFT FOUR FREE ORGAN CONCERTS PER YEAR FOR AUCKLANDERS</p>





AUCKLAND LIVE TIMELINE

THE TRANSFORMATION OF ARTS AND CULTURE IN TĀMAKI MAKĀURAU

2014	<p>THE EDGE SECURED THE MANAGEMENT OF THE BRUCE MASON CENTRE, TAKAPUNA</p> <p>THE EDGE REBRANDED AS AUCKLAND LIVE</p> <p>AUCKLAND LIVE WAS A FINALIST IN THE DESIGNERS INSTITUTE OF NEW ZEALAND BEST DESIGN AWARDS</p> <p>AUCKLAND LIVE CABARET SEASON WAS LAUNCHED</p> <p>AUCKLAND LIVE SUMMER IN THE SQUARE WAS ESTABLISHED</p> <p>ACTIVATION OF THE AOTEA SQUARE INCREASED</p> <p>VIRTUAL TOURS OF ALL OUR VENUES WERE ADDED TO AUCKLANDLIVE.CO.NZ</p>
2015	<p>AUCKLAND LIVE WAS AWARDED THE ARTS ACCESS CREATIVE NEW ZEALAND ARTS FOR ALL AWARD</p> <p>PICK AND MIX PERFORMANCES EXPANDED TO BRUCE MASON CENTRE AND MANGERE ARTS CENTRE</p>
2016	<p>AUCKLAND PHILHARMONIA ORCHESTRA (APO) TOOK UP RESIDENCE IN THE AUCKLAND TOWN HALL</p> <p>A DIGITAL DATA PROJECTOR WAS RETRO FITTED INTO THE CIVIC</p> <p>AUCKLAND LIVE SECURED THE MANAGEMENT OF SHED 10 AND THE CLOUD, QUEENS WHARF</p> <p>PURAPURAWHETU WAS PERFORMED COMPLETELY IN TE REO MĀORI AT THE HERALD THEATRE</p> <p>AUCKLAND LIVE AND THE AUCKLAND TOWN HALL TRUST AGREED TO GIFT FOUR FREE ORGAN CONCERTS PER YEAR FOR AUCKLANDERS</p>





2014	<div>THE EDGE SECURED THE MANAGEMENT OF THE BRUCE MASON CENTRE, TAKAPUNA</div> <div>THE EDGE REBRANDED AS AUCKLAND LIVE</div> <div>AUCKLAND LIVE WAS A FINALIST IN THE DESIGNERS INSTITUTE OF NEW ZEALAND BEST DESIGN AWARDS</div> <div>AUCKLAND LIVE CABARET SEASON WAS LAUNCHED</div> <div>AUCKLAND LIVE SUMMER IN THE SQUARE WAS ESTABLISHED</div> <div>ACTIVATION OF THE AOTEA SQUARE INCREASED</div> <div>VIRTUAL TOURS OF ALL OUR VENUES WERE ADDED TO AUCKLANDLIVE.CO.NZ</div>
2015	<div>AUCKLAND LIVE WAS AWARDED THE ARTS ACCESS CREATIVE NEW ZEALAND ARTS FOR ALL AWARD</div> <div>PICK AND MIX PERFORMANCES EXPANDED TO BRUCE MASON CENTRE AND MANGERE ARTS CENTRE</div>
2016	<div>AUCKLAND PHILHARMONIA ORCHESTRA (APO) TOOK UP RESIDENCE IN THE AUCKLAND TOWN HALL</div> <div>A DIGITAL DATA PROJECTOR WAS RETRO FITTED INTO THE CIVIC</div> <div>AUCKLAND LIVE SECURED THE MANAGEMENT OF SHED 10 AND THE CLOUD, QUEENS WHARF</div> <div>PURAPURAWHETU WAS PERFORMED COMPLETELY IN TE REO MĀORI AT THE HERALD THEATRE</div> <div>AUCKLAND LIVE AND THE AUCKLAND TOWN HALL TRUST AGREED TO GIFT FOUR FREE ORGAN CONCERTS PER YEAR FOR AUCKLANDERS</div>






2017	<div><div>AUCKLAND LIVE AND AUCKLAND CONVENTIONS, VENUES AND EVENTS MERGED</div><div>AUCKLAND LIVE OFFERED THE FIRST EVER BEHIND THE SCENES TACTILE TOUR OF MATILDA THE MUSICAL</div><div>AUCKLAND LIVE PRESENTED THE FIRST EVER AUDIO DESCRIPTION OF A FULL BALLET IN NEW ZEALAND</div><div>AUCKLAND LIVE ESTABLISHED THE CIVIC TOURS</div><div>AUCKLAND LIVE AND THE UNIVERSITY OF AUCKLAND ESTABLISHED A COURSE IN ARTS MANAGEMENT AND PRODUCTION</div></div>
2018	<div><div>THE AOTEA CENTRE PUBLIC FOYERS AND CONVENTIONS SPACES WERE REFURBISHED</div><div>AOTEA CENTRE’S NEW AND IMPROVED WAYFINDING WAS NOMINATED IN THE DESIGNERS INSTITUTE OF NZ BEST DESIGN AWARDS</div><div>THE ALCOVE LIGHTING IN THE GREAT HALL OF THE TOWN HALL WAS REPLACED WITH LED FIXTURE</div></div>
2019	<div><div>AUCKLAND LIVE’S DIGITAL STAGE WAS INSTALLED IN AOTEA SQUARE</div><div>ASB GIFTED THE NAMING RIGHTS OF THE ASB THEATRE TO DAME KIRI TE KANAWA</div><div>AUCKLAND LIVE INTRODUCED AN EDUCATION PROGRAMME</div><div>QBE INSURANCE JOINS THE AUCKLAND LIVE FAMILY AS A PRINCIPAL PARTNER</div><div>THE AUCKLAND LIVE CABARET SEASON TRANSFERRED TO THE CIVIC</div><div>AUCKLAND LIVE DEBUTED FRINGE TOWN AS PART OF THE FRINGE FESTIVAL</div></div> <div></div>



2017	<div>AUCKLAND LIVE AND AUCKLAND CONVENTIONS, VENUES AND EVENTS MERGED</div> <div>AUCKLAND LIVE OFFERED THE FIRST EVER BEHIND THE SCENES TACTILE TOUR OF ROALD DAHL’S MATILDA THE MUSICAL</div> <div>AUCKLAND LIVE PRESENTED THE FIRST EVER AUDIO DESCRIPTION OF A FULL BALLET IN NEW ZEALAND</div> <div>AUCKLAND LIVE ESTABLISHED THE CIVIC TOURS</div> <div>AUCKLAND LIVE AND THE UNIVERSITY OF AUCKLAND ESTABLISHED A COURSE IN ARTS MANAGEMENT AND PRODUCTION</div>
2018	<div>THE AOTEA CENTRE PUBLIC FOYERS AND CONVENTIONS SPACES WERE REFURBISHED</div> <div>AOTEA CENTRE’S NEW AND IMPROVED WAYFINDING WAS NOMINATED IN THE DESIGNERS INSTITUTE OF NZ BEST DESIGN AWARDS</div> <div>THE ALCOVE LIGHTING IN THE GREAT HALL OF THE TOWN HALL WAS REPLACED WITH LED FIXTURE</div>
2019	<div>AUCKLAND LIVE’S DIGITAL STAGE WAS INSTALLED IN AOTEA SQUARE</div> <div>ASB GIFTED THE NAMING RIGHTS OF THE ASB THEATRE TO DAME KIRI TE KANAWA</div> <div>AUCKLAND LIVE INTRODUCED AN EDUCATION PROGRAMME</div> <div>QBE INSURANCE JOINS THE AUCKLAND LIVE FAMILY AS A PRINCIPAL PARTNER</div> <div>THE AUCKLAND LIVE CABARET SEASON TRANSFERRED TO THE CIVIC</div> <div>AUCKLAND LIVE DEBUTED FRINGE TOWN AS PART OF THE FRINGE FESTIVAL</div>





2017	<div>AUCKLAND LIVE AND AUCKLAND CONVENTIONS, VENUES AND EVENTS MERGED</div> <div>AUCKLAND LIVE OFFERED THE FIRST EVER BEHIND THE SCENES TACTILE TOUR OF MATILDA THE MUSICAL</div> <div>AUCKLAND LIVE PRESENTED THE FIRST EVER AUDIO DESCRIPTION OF A FULL BALLET IN NEW ZEALAND</div>
2018	<div>AUCKLAND LIVE ESTABLISHED THE CIVIC TOURS</div> <div>AUCKLAND LIVE AND THE UNIVERSITY OF AUCKLAND ESTABLISHED A COURSE IN ARTS MANAGEMENT AND PRODUCTION</div> <div>THE AOTEA CENTRE PUBLIC FOYERS AND CONVENTIONS SPACES WERE REFURBISHED</div> <div>AOTEA CENTRE’S NEW AND IMPROVED WAYFINDING WAS NOMINATED IN THE DESIGNERS INSTITUTE OF NZ BEST DESIGN AWARDS</div> <div>THE ALCOVE LIGHTING IN THE GREAT HALL OF THE TOWN HALL WAS REPLACED WITH LED FIXTURE</div>
2019	<div>AUCKLAND LIVE’S DIGITAL STAGE WAS INSTALLED IN AOTEA SQUARE</div> <div>ASB GIFTED THE NAMING RIGHTS OF THE ASB THEATRE TO DAME KIRI TE KANAWA</div> <div>AUCKLAND LIVE INTRODUCED AN EDUCATION PROGRAMME</div> <div>QBE INSURANCE JOINS THE AUCKLAND LIVE FAMILY AS A PRINCIPAL PARTNER</div> <div>THE AUCKLAND LIVE CABARET SEASON TRANSFERRED TO THE CIVIC</div> <div>AUCKLAND LIVE DEBUTED FRINGE TOWN AS PART OF THE FRINGE FESTIVAL</div>
	<div></div>




2017	<div>AUCKLAND LIVE AND AUCKLAND CONVENTIONS, VENUES AND EVENTS MERGED</div> <div>AUCKLAND LIVE OFFERED THE FIRST EVER BEHIND THE SCENES TACTILE TOUR OF MATILDA THE MUSICAL</div> <div>AUCKLAND LIVE PRESENTED THE FIRST EVER AUDIO DESCRIPTION OF A FULL BALLET IN NEW ZEALAND</div> <div>AUCKLAND LIVE ESTABLISHED THE CIVIC TOURS</div>
2018	<div>AUCKLAND LIVE AND THE UNIVERSITY OF AUCKLAND ESTABLISHED A COURSE IN ARTS MANAGEMENT AND PRODUCTION</div> <div>THE AOTEA CENTRE PUBLIC FOYERS AND CONVENTIONS SPACES WERE REFURBISHED</div> <div>AOTEA CENTRE’S NEW AND IMPROVED WAYFINDING WAS NOMINATED IN THE DESIGNERS INSTITUTE OF NZ BEST DESIGN AWARDS</div> <div>THE ALCOVE LIGHTING IN THE GREAT HALL OF THE TOWN HALL WAS REPLACED WITH LED FIXTURE</div>
2019	<div>AUCKLAND LIVE’S DIGITAL STAGE WAS INSTALLED IN AOTEA SQUARE</div> <div>ASB GIFTED THE NAMING RIGHTS OF THE ASB THEATRE TO DAME KIRI TE KANAWA</div> <div>AUCKLAND LIVE INTRODUCED AN EDUCATION PROGRAMME</div> <div>QBE INSURANCE JOINS THE AUCKLAND LIVE FAMILY AS A PRINCIPAL PARTNER</div> <div>THE AUCKLAND LIVE CABARET SEASON TRANSFERRED TO THE CIVIC</div> <div>AUCKLAND LIVE DEBUTED FRINGE TOWN AS PART OF THE FRINGE FESTIVAL</div>



2017	<div>AUCKLAND LIVE AND AUCKLAND CONVENTIONS, VENUES AND EVENTS MERGED</div> <div>AUCKLAND LIVE OFFERED THE FIRST EVER BEHIND THE SCENES TACTILE TOUR OF MATILDA THE MUSICAL</div> <div>AUCKLAND LIVE PRESENTED THE FIRST EVER AUDIO DESCRIPTION OF A FULL BALLET IN NEW ZEALAND</div> <div>AUCKLAND LIVE ESTABLISHED THE CIVIC TOURS</div> <div>AUCKLAND LIVE AND THE UNIVERSITY OF AUCKLAND ESTABLISHED A COURSE IN ARTS MANAGEMENT AND PRODUCTION</div>
2018	<div>THE AOTEA CENTRE PUBLIC FOYERS AND CONVENTIONS SPACES WERE REFURBISHED</div> <div>AOTEA CENTRE’S NEW AND IMPROVED WAYFINDING WAS NOMINATED IN THE DESIGNERS INSTITUTE OF NZ BEST DESIGN AWARDS</div> <div>THE ALCOVE LIGHTING IN THE GREAT HALL OF THE TOWN HALL WAS REPLACED WITH LED FIXTURE</div>
2019	<div>AUCKLAND LIVE’S DIGITAL STAGE WAS INSTALLED IN AOTEA SQUARE</div> <div>ASB GIFTED THE NAMING RIGHTS OF THE ASB THEATRE TO DAME KIRI TE KANAWA</div> <div>AUCKLAND LIVE INTRODUCED AN EDUCATION PROGRAMME</div> <div>QBE INSURANCE JOINS THE AUCKLAND LIVE FAMILY AS A PRINCIPAL PARTNER</div> <div>THE AUCKLAND LIVE CABARET SEASON TRANSFERRED TO THE CIVIC</div> <div>AUCKLAND LIVE DEBUTED FRINGE TOWN AS PART OF THE FRINGE FESTIVAL</div>



2017	<div><div>AUCKLAND LIVE AND AUCKLAND CONVENTIONS, VENUES AND EVENTS MERGED</div><div>AUCKLAND LIVE OFFERED THE FIRST EVER BEHIND THE SCENES TACTILE TOUR OF MATILDA THE MUSICAL</div><div>AUCKLAND LIVE PRESENTED THE FIRST EVER AUDIO DESCRIPTION OF A FULL BALLET IN NEW ZEALAND</div><div>AUCKLAND LIVE ESTABLISHED THE CIVIC TOURS</div><div>AUCKLAND LIVE AND THE UNIVERSITY OF AUCKLAND ESTABLISHED A COURSE IN ARTS MANAGEMENT AND PRODUCTION</div></div>
2018	<div>THE AOTEA CENTRE PUBLIC FOYERS AND CONVENTIONS SPACES WERE REFURBISHED</div>
2019	<div><div>AOTEA CENTRE'S NEW AND IMPROVED WAYFINDING WAS NOMINATED IN THE DESIGNERS INSTITUTE OF NZ BEST DESIGN AWARDS</div><div>THE ALCOVE LIGHTING IN THE GREAT HALL OF THE TOWN HALL WAS REPLACED WITH LED FIXTURE</div><div>AUCKLAND LIVE'S DIGITAL STAGE WAS INSTALLED IN AOTEA SQUARE</div><div>ASB GIFTED THE NAMING RIGHTS OF THE ASB THEATRE TO DAME KIRI TE KANAWA</div><div>AUCKLAND LIVE INTRODUCED AN EDUCATION PROGRAMME</div><div>QBE INSURANCE JOINS THE AUCKLAND LIVE FAMILY AS A PRINCIPAL PARTNER</div><div>THE AUCKLAND LIVE CABARET SEASON TRANSFERRED TO THE CIVIC</div><div>AUCKLAND LIVE DEBUTED FRINGE TOWN AS PART OF THE FRINGE FESTIVAL</div></div> <div></div>



2017	<div>AUCKLAND LIVE AND AUCKLAND CONVENTIONS, VENUES AND EVENTS MERGED</div> <div>AUCKLAND LIVE OFFERED THE FIRST EVER BEHIND THE SCENES TACTILE TOUR OF MATILDA THE MUSICAL</div> <div>AUCKLAND LIVE PRESENTED THE FIRST EVER AUDIO DESCRIPTION OF A FULL BALLET IN NEW ZEALAND</div> <div>AUCKLAND LIVE ESTABLISHED THE CIVIC TOURS</div> <div>AUCKLAND LIVE AND THE UNIVERSITY OF AUCKLAND ESTABLISHED A COURSE IN ARTS MANAGEMENT AND PRODUCTION</div>
2018	<div>THE AOTEA CENTRE PUBLIC FOYERS AND CONVENTIONS SPACES WERE REFURBISHED</div> <div>AOTEA CENTRE'S NEW AND IMPROVED WAYFINDING WAS NOMINATED IN THE DESIGNERS INSTITUTE OF NZ BEST DESIGN AWARDS</div>
2019	<div>THE ALCOVE LIGHTING IN THE GREAT HALL OF THE TOWN HALL WAS REPLACED WITH LED FIXTURE</div> <div>AUCKLAND LIVE'S DIGITAL STAGE WAS INSTALLED IN AOTEA SQUARE</div> <div>ASB GIFTED THE NAMING RIGHTS OF THE ASB THEATRE TO DAME KIRI TE KANAWA</div> <div>AUCKLAND LIVE INTRODUCED AN EDUCATION PROGRAMME</div> <div>QBE INSURANCE JOINS THE AUCKLAND LIVE FAMILY AS A PRINCIPAL PARTNER</div> <div>THE AUCKLAND LIVE CABARET SEASON TRANSFERRED TO THE CIVIC</div> <div>AUCKLAND LIVE DEBUTED FRINGE TOWN AS PART OF THE FRINGE FESTIVAL</div>



2017	<div>AUCKLAND LIVE AND AUCKLAND CONVENTIONS, VENUES AND EVENTS MERGED</div> <div>AUCKLAND LIVE OFFERED THE FIRST EVER BEHIND THE SCENES TACTILE TOUR OF MATILDA THE MUSICAL</div> <div>AUCKLAND LIVE PRESENTED THE FIRST EVER AUDIO DESCRIPTION OF A FULL BALLET IN NEW ZEALAND</div> <div>AUCKLAND LIVE ESTABLISHED THE CIVIC TOURS</div> <div>AUCKLAND LIVE AND THE UNIVERSITY OF AUCKLAND ESTABLISHED A COURSE IN ARTS MANAGEMENT AND PRODUCTION</div>
2018	<div>THE AOTEA CENTRE PUBLIC FOYERS AND CONVENTIONS SPACES WERE REFURBISHED</div> <div>AOTEA CENTRE’S NEW AND IMPROVED WAYFINDING WAS NOMINATED IN THE DESIGNERS INSTITUTE OF NZ BEST DESIGN AWARDS</div> <div>THE ALCOVE LIGHTING IN THE GREAT HALL OF THE TOWN HALL WAS REPLACED WITH LED FIXTURE</div>
2019	<div>AUCKLAND LIVE’S DIGITAL STAGE WAS INSTALLED IN AOTEA SQUARE</div> <div>ASB GIFTED THE NAMING RIGHTS OF THE ASB THEATRE TO DAME KIRI TE KANAWA</div> <div>AUCKLAND LIVE INTRODUCED AN EDUCATION PROGRAMME</div> <div>QBE INSURANCE JOINS THE AUCKLAND LIVE FAMILY AS A PRINCIPAL PARTNER</div> <div>THE AUCKLAND LIVE CABARET SEASON TRANSFERRED TO THE CIVIC</div> <div>AUCKLAND LIVE DEBUTED FRINGE TOWN AS PART OF THE FRINGE FESTIVAL</div>



2017	<div><div>AUCKLAND LIVE AND AUCKLAND CONVENTIONS, VENUES AND EVENTS MERGED</div><div>AUCKLAND LIVE OFFERED THE FIRST EVER BEHIND THE SCENES TACTILE TOUR OF MATILDA THE MUSICAL</div><div>AUCKLAND LIVE PRESENTED THE FIRST EVER AUDIO DESCRIPTION OF A FULL BALLET IN NEW ZEALAND</div><div>AUCKLAND LIVE ESTABLISHED THE CIVIC TOURS</div><div>AUCKLAND LIVE AND THE UNIVERSITY OF AUCKLAND ESTABLISHED A COURSE IN ARTS MANAGEMENT AND PRODUCTION</div></div>
2018	<div><div>THE AOTEA CENTRE PUBLIC FOYERS AND CONVENTIONS SPACES WERE REFURBISHED</div><div>AOTEA CENTRE’S NEW AND IMPROVED WAYFINDING WAS NOMINATED IN THE DESIGNERS INSTITUTE OF NZ BEST DESIGN AWARDS</div><div>THE ALCOVE LIGHTING IN THE GREAT HALL OF THE TOWN HALL WAS REPLACED WITH LED FIXTURE</div></div>
2019	<div><div>AUCKLAND LIVE’S DIGITAL STAGE WAS INSTALLED IN AOTEA SQUARE</div><div>ASB GIFTED THE NAMING RIGHTS OF THE ASB THEATRE TO DAME KIRI TE KANAWA</div><div>AUCKLAND LIVE INTRODUCED AN EDUCATION PROGRAMME</div><div>QBE INSURANCE JOINS THE AUCKLAND LIVE FAMILY AS A PRINCIPAL PARTNER</div><div>THE AUCKLAND LIVE CABARET SEASON TRANSFERRED TO THE CIVIC</div><div>AUCKLAND LIVE DEBUTED FRINGE TOWN AS PART OF THE FRINGE FESTIVAL</div></div> <div></div>



2017	<div>AUCKLAND LIVE AND AUCKLAND CONVENTIONS, VENUES AND EVENTS MERGED</div> <div>AUCKLAND LIVE OFFERED THE FIRST EVER BEHIND THE SCENES TACTILE TOUR OF MATILDA THE MUSICAL</div> <div>AUCKLAND LIVE PRESENTED THE FIRST EVER AUDIO DESCRIPTION OF A FULL BALLET IN NEW ZEALAND</div> <div>AUCKLAND LIVE ESTABLISHED THE CIVIC TOURS</div> <div>AUCKLAND LIVE AND THE UNIVERSITY OF AUCKLAND ESTABLISHED A COURSE IN ARTS MANAGEMENT AND PRODUCTION</div>
2018	<div>THE AOTEA CENTRE PUBLIC FOYERS AND CONVENTIONS SPACES WERE REFURBISHED</div> <div>AOTEA CENTRE’S NEW AND IMPROVED WAYFINDING WAS NOMINATED IN THE DESIGNERS INSTITUTE OF NZ BEST DESIGN AWARDS</div> <div>THE ALCOVE LIGHTING IN THE GREAT HALL OF THE TOWN HALL WAS REPLACED WITH LED FIXTURE</div>
2019	<div>AUCKLAND LIVE’S DIGITAL STAGE WAS INSTALLED IN AOTEA SQUARE</div> <div>ASB GIFTED THE NAMING RIGHTS OF THE ASB THEATRE TO DAME KIRI TE KANAWA</div> <div>AUCKLAND LIVE INTRODUCED AN EDUCATION PROGRAMME</div> <div>QBE INSURANCE JOINS THE AUCKLAND LIVE FAMILY AS A PRINCIPAL PARTNER</div> <div>THE AUCKLAND LIVE CABARET SEASON TRANSFERRED TO THE CIVIC</div> <div>AUCKLAND LIVE DEBUTED FRINGE TOWN AS PART OF THE FRINGE FESTIVAL</div>





2017	AUCKLAND LIVE AND AUCKLAND CONVENTIONS, VENUES AND EVENTS MERGED
	AUCKLAND LIVE OFFERED THE FIRST EVER BEHIND THE SCENES TACTILE TOUR OF MATILDA THE MUSICAL
	AUCKLAND LIVE PRESENTED THE FIRST EVER AUDIO DESCRIPTION OF A FULL BALLET IN NEW ZEALAND
	AUCKLAND LIVE ESTABLISHED THE CIVIC TOURS
	AUCKLAND LIVE AND THE UNIVERSITY OF AUCKLAND ESTABLISHED A COURSE IN ARTS MANAGEMENT AND PRODUCTION
2018	THE AOTEA CENTRE PUBLIC FOYERS AND CONVENTIONS SPACES WERE REFURBISHED
	AOTEA CENTRE’S NEW AND IMPROVED WAYFINDING WAS NOMINATED IN THE DESIGNERS INSTITUTE OF NZ BEST DESIGN AWARDS
	THE ALCOVE LIGHTING IN THE GREAT HALL OF THE TOWN HALL WAS REPLACED WITH LED FIXTURE
2019	AUCKLAND LIVE’S DIGITAL STAGE WAS INSTALLED IN AOTEA SQUARE
	ASB GIFTED THE NAMING RIGHTS OF THE ASB THEATRE TO DAME KIRI TE KANAWA
	AUCKLAND LIVE INTRODUCED AN EDUCATION PROGRAMME
	QBE INSURANCE JOINS THE AUCKLAND LIVE FAMILY AS A PRINCIPAL PARTNER
	THE AUCKLAND LIVE CABARET SEASON TRANSFERRED TO THE CIVIC
	AUCKLAND LIVE DEBUTED FRINGE TOWN AS PART OF THE FRINGE FESTIVAL





2017	<div>AUCKLAND LIVE AND AUCKLAND CONVENTIONS, VENUES AND EVENTS MERGED</div> <div>AUCKLAND LIVE OFFERED THE FIRST EVER BEHIND THE SCENES TACTILE TOUR OF MATILDA THE MUSICAL</div> <div>AUCKLAND LIVE PRESENTED THE FIRST EVER AUDIO DESCRIPTION OF A FULL BALLET IN NEW ZEALAND</div> <div>AUCKLAND LIVE ESTABLISHED THE CIVIC TOURS</div> <div>AUCKLAND LIVE AND THE UNIVERSITY OF AUCKLAND ESTABLISHED A COURSE IN ARTS MANAGEMENT AND PRODUCTION</div>
2018	<div>THE AOTEA CENTRE PUBLIC FOYERS AND CONVENTIONS SPACES WERE REFURBISHED</div> <div>AOTEA CENTRE’S NEW AND IMPROVED WAYFINDING WAS NOMINATED IN THE DESIGNERS INSTITUTE OF NZ BEST DESIGN AWARDS</div> <div>THE ALCOVE LIGHTING IN THE GREAT HALL OF THE TOWN HALL WAS REPLACED WITH LED FIXTURE</div>
2019	<div>AUCKLAND LIVE’S DIGITAL STAGE WAS INSTALLED IN AOTEA SQUARE</div> <div>ASB GIFTED THE NAMING RIGHTS OF THE ASB THEATRE TO DAME KIRI TE KANAWA</div> <div>AUCKLAND LIVE INTRODUCED AN EDUCATION PROGRAMME</div> <div>QBE INSURANCE JOINS THE AUCKLAND LIVE FAMILY AS A PRINCIPAL PARTNER</div> <div>THE AUCKLAND LIVE CABARET SEASON TRANSFERRED TO THE CIVIC</div> <div>AUCKLAND LIVE DEBUTED FRINGE TOWN AS PART OF THE FRINGE FESTIVAL</div>



2017

2018

- AUCKLAND LIVE AND AUCKLAND CONVENTIONS, VENUES AND EVENTS MERGED
- AUCKLAND LIVE OFFERED THE FIRST EVER BEHIND THE SCENES TACTILE TOUR OF MATILDA THE MUSICAL
- AUCKLAND LIVE PRESENTED THE FIRST EVER AUDIO DESCRIPTION OF A FULL BALLET IN NEW ZEALAND
- AUCKLAND LIVE ESTABLISHED THE CIVIC TOURS
- AUCKLAND LIVE AND THE UNIVERSITY OF AUCKLAND ESTABLISHED A COURSE IN ARTS MANAGEMENT AND PRODUCTION
- THE AOTEA CENTRE PUBLIC FOYERS AND CONVENTIONS SPACES WERE REFURBISHED
- AOTEA CENTRE’S NEW AND IMPROVED WAYFINDING WAS NOMINATED IN THE DESIGNERS INSTITUTE OF NZ BEST DESIGN AWARDS
- THE ALCOVE LIGHTING IN THE GREAT HALL OF THE TOWN HALL WAS REPLACED WITH LED FIXTURE

2019

- AUCKLAND LIVE’S DIGITAL STAGE WAS INSTALLED IN AOTEA SQUARE
- ASB GIFTED THE NAMING RIGHTS OF THE ASB THEATRE TO DAME KIRI TE KANAWA
- AUCKLAND LIVE INTRODUCED AN EDUCATION PROGRAMME
- QBE INSURANCE JOINS THE AUCKLAND LIVE FAMILY AS A PRINCIPAL PARTNER
- THE AUCKLAND LIVE CABARET SEASON TRANSFERRED TO THE CIVIC
- AUCKLAND LIVE DEBUTED FRINGE TOWN AS PART OF THE FRINGE FESTIVAL





2017	<div>AUCKLAND LIVE AND AUCKLAND CONVENTIONS, VENUES AND EVENTS MERGED</div> <div>AUCKLAND LIVE OFFERED THE FIRST EVER BEHIND THE SCENES TACTILE TOUR OF MATILDA THE MUSICAL</div> <div>AUCKLAND LIVE PRESENTED THE FIRST EVER AUDIO DESCRIPTION OF A FULL BALLET IN NEW ZEALAND</div> <div>AUCKLAND LIVE ESTABLISHED THE CIVIC TOURS</div> <div>AUCKLAND LIVE AND THE UNIVERSITY OF AUCKLAND ESTABLISHED A COURSE IN ARTS MANAGEMENT AND PRODUCTION</div>
2018	<div>THE AOTEA CENTRE PUBLIC FOYERS AND CONVENTIONS SPACES WERE REFURBISHED</div> <div>AOTEA CENTRE’S NEW AND IMPROVED WAYFINDING WAS NOMINATED IN THE DESIGNERS INSTITUTE OF NZ BEST DESIGN AWARDS</div> <div>THE ALCOVE LIGHTING IN THE GREAT HALL OF THE TOWN HALL WAS REPLACED WITH LED FIXTURE</div>
2019	<div>AUCKLAND LIVE’S DIGITAL STAGE WAS INSTALLED IN AOTEA SQUARE</div> <div>ASB GIFTED THE NAMING RIGHTS OF THE ASB THEATRE TO DAME KIRI TE KANAWA</div> <div>AUCKLAND LIVE INTRODUCED AN EDUCATION PROGRAMME</div> <div>QBE INSURANCE JOINS THE AUCKLAND LIVE FAMILY AS A PRINCIPAL PARTNER</div> <div>THE AUCKLAND LIVE CABARET SEASON TRANSFERRED TO THE CIVIC</div> <div>AUCKLAND LIVE DEBUTED FRINGE TOWN AS PART OF THE FRINGE FESTIVAL</div>





2020

IHI BY LISA REIHANA WAS INSTALLED IN THE AOTEA CENTRE

AUCKLAND LIVE DIGITAL SERVICES WAS AWARDED THE ENTERTAINMENT VENUES ASSOCIATION OF NEW ZEALAND HPA INNOVATION OF THE YEAR AWARD

AUCKLAND LIVE, IN PARTNERSHIP WITH PANNZ, WAS AWARDED A GHOST LIGHT AWARD FOR OUTSTANDING CONTRIBUTION TO PROFESSIONAL THEATRE AT NGA WHAKARĀKEI O WHĀTAITAI, THE WELLINGTON THEATRE AWARDS





2020

IHI BY LISA REIHANA WAS INSTALLED IN THE AOTEA CENTRE

AUCKLAND LIVE DIGITAL SERVICES WAS AWARDED THE ENTERTAINMENT VENUES ASSOCIATION OF NEW ZEALAND HPA INNOVATION OF THE YEAR AWARD

AUCKLAND LIVE, IN PARTNERSHIP WITH PANNZ, WAS AWARDED A GHOST LIGHT AWARD FOR OUTSTANDING CONTRIBUTION TO PROFESSIONAL THEATRE AT NGA WHAKARĀKEI O WHĀTAITAI, THE WELLINGTON THEATRE AWARDS





- 2020
- IHI BY LISA REIHANA WAS INSTALLED IN THE AOTEA CENTRE

AUCKLAND LIVE DIGITAL SERVICES WAS AWARDED THE ENTERTAINMENT VENUES ASSOCIATION OF NEW ZEALAND HPA INNOVATION OF THE YEAR AWARD

AUCKLAND LIVE, IN PARTNERSHIP WITH PANNZ, WAS AWARDED A GHOST LIGHT AWARD FOR OUTSTANDING CONTRIBUTION TO PROFESSIONAL THEATRE AT NGA WHAKARĀKEI O WHĀTAITAI, THE WELLINGTON THEATRE AWARDS

REGIONAL FACILITIES AUCKLAND (RFA) MERGED WITH AUCKLAND TOURISM, EVENTS AND ECONOMIC DEVELOPMENT (ATEED) TO FORM AUCKLAND UNLIMITED