

An aerial photograph of the Auckland city skyline and harbor. The image shows a dense cluster of modern skyscrapers and older buildings along the waterfront. The harbor is filled with numerous white sailboats and yachts docked at various piers. The water is a deep blue-green color. In the background, the city extends up a hillside. The sky is a clear, bright blue. In the top left corner, there is a graphic of several overlapping yellow circles of varying sizes.

AUCKLAND
CONVENTIONS
venues & events

OUR VENUES

NEW ZEALAND'S
LARGEST PORTFOLIO
OF CELEBRATED VENUES

CONTENTS

1	HAERE MAI & WELCOME
2	AOTEA CENTRE
4	VIADUCT EVENTS CENTRE
6	SHED 10
8	THE CLOUD
10	AUCKLAND TOWN HALL
12	MOTAT
14	AUCKLAND ZOO
16	AUCKLAND ART GALLERY TOI O TĀMAKI
18	THE CIVIC
20	BRUCE MASON CENTRE
22	NORTH HARBOUR STADIUM
24	GO MEDIA STADIUM
26	VENUE LOCATION MAPS
28	OUR SERVICES

Haere mai

WELCOME

TO AUCKLAND CONVENTIONS, VENUES & EVENTS

As custodians of New Zealand's largest portfolio of celebrated venues, we are proud to offer a range of unique world-class venues for extraordinary events in Auckland.

Facilitating and delivering exceptional events is our passion. Whether your meeting, conference, exhibition, gala dinner or awards ceremony is for 50 or 2,000 people, choose from more than sixty versatile spaces to suit any occasion.

With a specialised and dedicated team, every detail is looked after with care to ensure the seamless delivery of each event.

AOTEA CENTRE | AOTEA - TE POKAPŪ

AUCKLAND
CONVENTIONS
venues & events



A FLEXIBLE MULTI-PURPOSE CONVENTION CENTRE

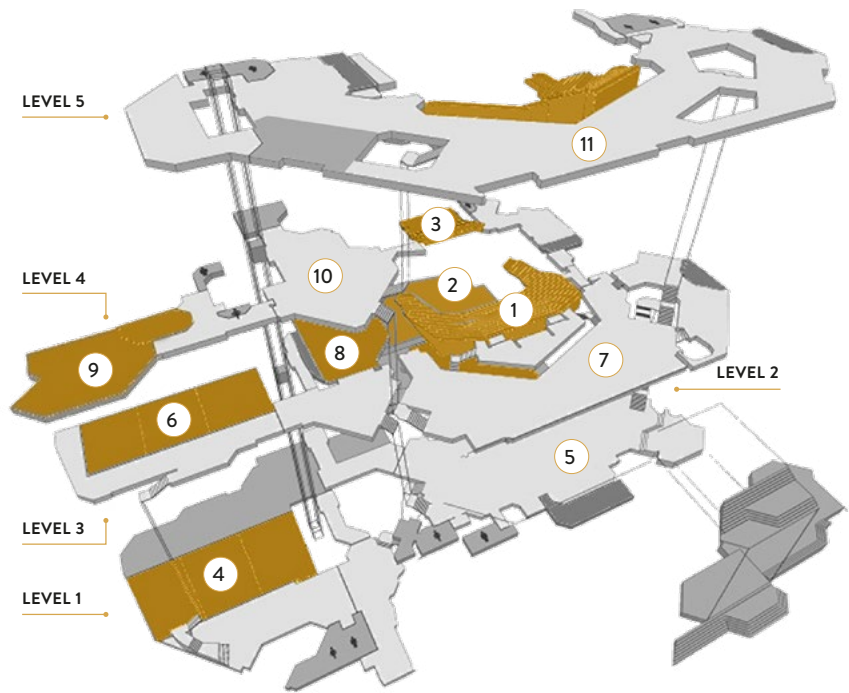
The recently refurbished Aotea – Te Pokapū | Aotea Centre is a premier venue in Auckland, ideal for events of all sizes. Located in the heart of the city, it’s the home of performing arts and a vibrant hub for conferences, trade shows, meetings, gala dinners, and cocktail functions.

Conveniently situated in central Auckland, the venue is close to dining, accommodation, entertainment, and public transport.

FEATURES

- Conveniently located on Queen Street
- Auditorium seating for over 2,000
- Flexible spaces to suit all event types
- Multiple breakout rooms
- Building boasts cutting edge technology
- Award winning catering providers
- Close proximity to The Civic, Auckland Town Hall, Aotea Square and Herald Theatre
- On-site car parking facilities
- Close to major transport routes

Discover **Aotea Centre** here.



1. Kiri Te Kanawa Theatre



4. Hunua Rooms



6. Waitakere Rooms

Capacity Chart

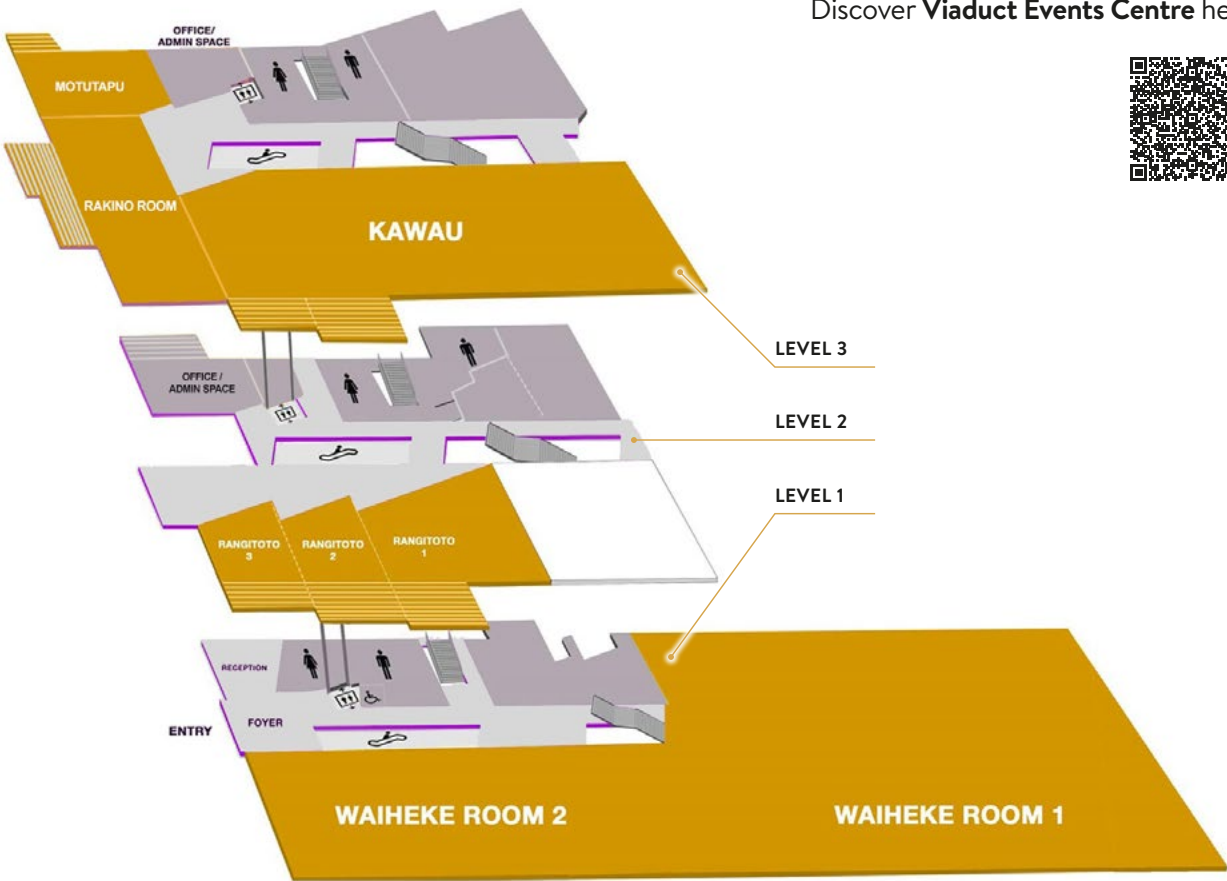
ROOMS	HEIGHT m	AREA m ²	THEATRE	CLASSROOM	U-SHAPE	CABARET	BANQUET	COCKTAIL	EXHIBITION
Kiri Te Kanawa Theatre 1	—	—	2139	—	—	—	—	—	—
Kiri Te Kanawa Stage 2	—	—	—	—	—	—	160	300	—
Herald Theatre 3	—	—	186	—	—	—	—	—	—
Hunua Rooms including foyers Level 1	4.35m	909m ²	778	376	—	464	580	900	32
Hunua Rooms excluding foyers 4	4.35m	571m ²	528	284	80	304	380	570	—
Hunua 1	4.35m	204m ²	186	92	44	112	120	200	—
Hunua 2	4.35m	187m ²	185	88	40	104	120	180	—
Hunua 3	4.35m	180m ²	169	88	40	96	110	180	—
Stalls Foyer Level 2 5	2.97m	800m ²	—	—	—	—	—	800	20
Waitakere Rooms including foyers Level 3	2.70m	518m ²	440	264	—	280	330	500	18
Waitakere Rooms excluding foyers 6	2.70m	368m ²	322	196	64	200	240	370	—
Waitakere 1	2.70m	137m ²	128	60	36	72	90	140	—
Waitakere 2	2.70m	125m ²	105	56	32	56	70	125	—
Waitakere 3	2.70m	106m ²	97	40	32	48	60	100	—
Circle Foyer Level 3 7	4.97m	460m ²	—	—	—	—	—	460	22
Limelight Rooms Level 3 8	2.50m	318m ²	180	108	48	120	150	300	10
Limelight 1	2.50m	125m ²	84	60	32	56	70	125	—
Limelight 2	2.50m	193m ²	126	64	40	80	100	190	—
Waihorotiu 1 Level 4 9	2.68m	180m ²	100	60	36	80	90	180	—
Waihorotiu 2 Level 4	2.40m	40m ²	25	20	16	16	20	40	—
QBE Gallery Level 4 10	2.50m	240m ²	—	—	—	—	—	200	10
Balcony Foyer Level 5 11	2.98m	1100m ²	—	—	—	—	—	1000	42

Please note: All capacities are guidelines only and are based on the maximum use of the space available for standard setups. They may be reduced by staging, technical equipment, dance floors, type of menu being served or entertainment.

VIADUCT EVENTS CENTRE

AUCKLAND
CONVENTIONS
venues & events

Discover Viaduct Events Centre here.



A PREMIUM VENUE EXCEPTIONAL ON ALL LEVELS

The Viaduct Events Centre is a premium venue located in Auckland's vibrant Wynyard Quarter, offering a stunning waterfront location and modern design.

Situated just minutes from Auckland's city centre, the venue is surrounded by a variety of restaurants, cafes, and public spaces, creating a lively and attractive environment. This venue ideal for cocktail functions, gala dinners, exhibitions, and conferences.

FEATURES

- Distinctive and flexible spaces
- Located on the waterfront in the vibrant Wynyard Quarter
- 6,000m² three-storey venue
- Dramatic views across the Waitematā Harbour
- Premium banquet space
- Award winning catering providers
- On-site audio-visual technicians
- Seven versatile rooms
- Accessible balconies attached to Level 2 and 3 spaces



Capacity Chart

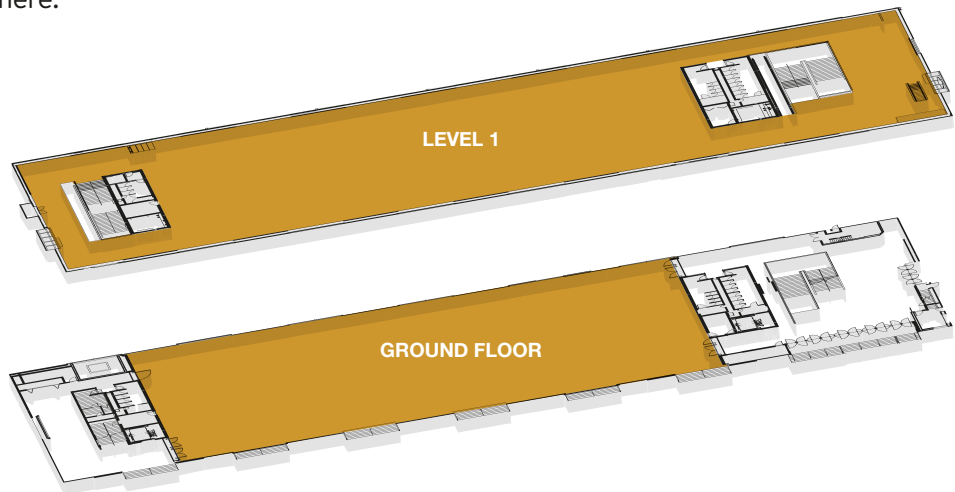
ROOMS	HEIGHT m	AREA m ²	THEATRE	CLASSROOM	BANQUET	COCKTAIL	CABARET	EXHIBITION
Waiheke 1 & 2	Varied	2109m ²	2300	1200	1200	2850	1330	130 booths
Waiheke 1	12m	1406m ²	1800	1000	850	2200	768	100 booths
Waiheke 2	3.5m	703m ²	450	320	400	600	312	25 booths
Rangitoto 1	3.5m	192m ²	180	96	120	240	80	—
Rangitoto 2	3.5m	74m ²	50	40	50	50	40	—
Rangitoto 3	3.5m	72m ²	50	32	50	50	40	—
Rangitoto 1 & 2	3.5m	267m ²	—	—	—	240	—	—
Rangitoto 2 & 3	3.5m	146m ²	—	—	—	175	—	—
Rangitoto 1, 2, 3	3.5m	338m ²	—	—	—	240	128	—
Kowau	4m	570m ²	570	375	400	700	304	30 booths
Motutapu	4m	88m ²	50	48	50	50	40	—
Rakino	4m	192m ²	180	100	120	200	104	—

Please note: All capacities are guidelines only and are based on the maximum use of the space available for standard setups. They may be reduced by staging, technical equipment, dance floors, type of menu being served or entertainment.

SHED 10

AUCKLAND
CONVENTIONS
venues & events

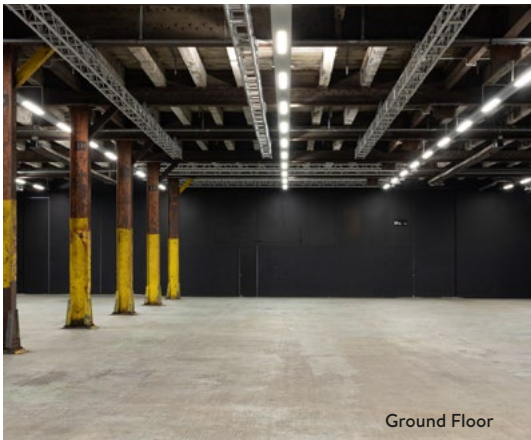
Discover Shed 10 here.



Exterior



Level 1



Ground Floor

A BLANK CANVAS TO MAKE YOUR OWN

Shed 10, located on Auckland's waterfront, is a historic yet versatile venue ideal for conferences, gala dinners, and award ceremonies.

Built in 1910, this heritage-listed Category 1 Historic Place is the last original building on Queens Wharf. Thoughtfully restored, it combines premium event amenities with its original industrial charm.

FEATURES

- Located on Queens Wharf on the Auckland waterfront
- Uninterrupted views of the Waitematā Harbour
- 4,400m2 over two levels
- Multipurpose event venue
- Walking distance from public transport hubs and retail precincts
- Close to multiple hotels and entertainment options



Ground Floor

Capacity Chart

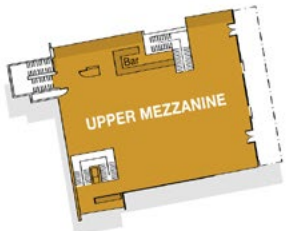
ROOMS	HEIGHT m	AREA m ²	THEATRE	CABARET	BANQUET	COCKTAIL	EXHIBITION
Ground Floor	4.9m	2216m ²	1575	580	700	2000	61 booths
Level 1	3.75m	2204m ²	1000	640	750	1000	53 booths

Please note: All capacities are guidelines only and are based on the maximum use of the space available for standard setups. They may be reduced by staging, technical equipment, dance floors, type of menu being served or entertainment.

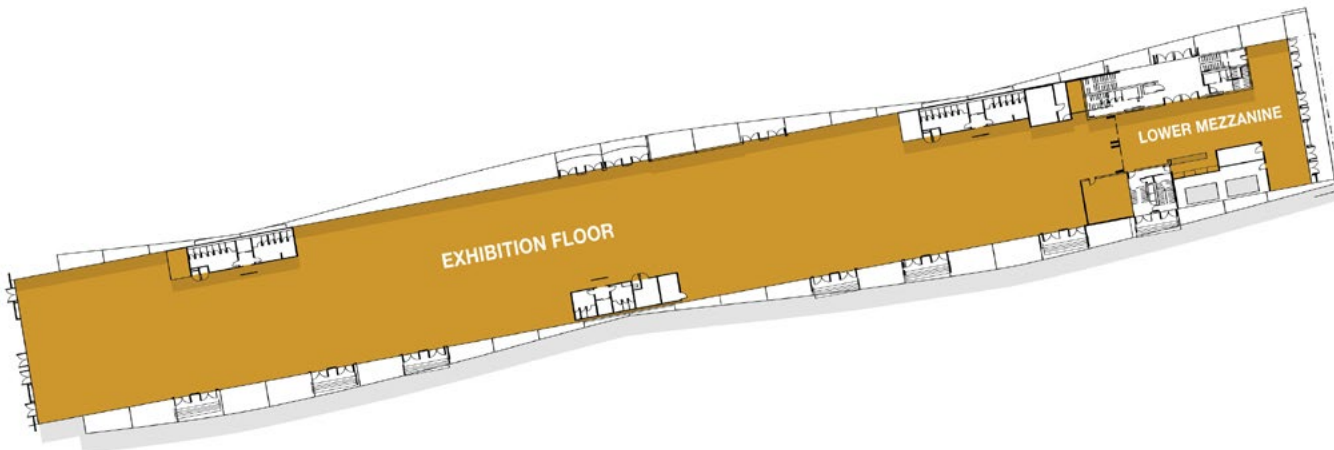
THE CLOUD

AUCKLAND
CONVENTIONS
venues & events

Discover **The Cloud** here.



Level 2



Level 1



EXQUISITELY UNIQUE ON QUEENS WHARF

The Cloud, located on Auckland's waterfront beside Shed 10, is a striking and versatile venue ideal for exhibitions, dinners, weddings, and large-scale events.

With its distinctive design, flexibility, and capacity, The Cloud continues to be a standout choice for a variety of occasions, blending functionality with Auckland's waterfront charm.

FEATURES

- Unique and modern
- Pillar-less venue
- 2,700m² exhibition floor space
- Flexible spaces to suit all event types
- Award winning catering providers
- Close proximity to Shed 10 and downtown Auckland
- Walking distance from major transport hubs - train, bus and ferry terminals
- Panoramic views of Rangitoto Island and Devonport across the Waitematā Harbour



Upper Mezzanine



Exhibition Floor



Balcony



Lower Mezzanine

Capacity Chart

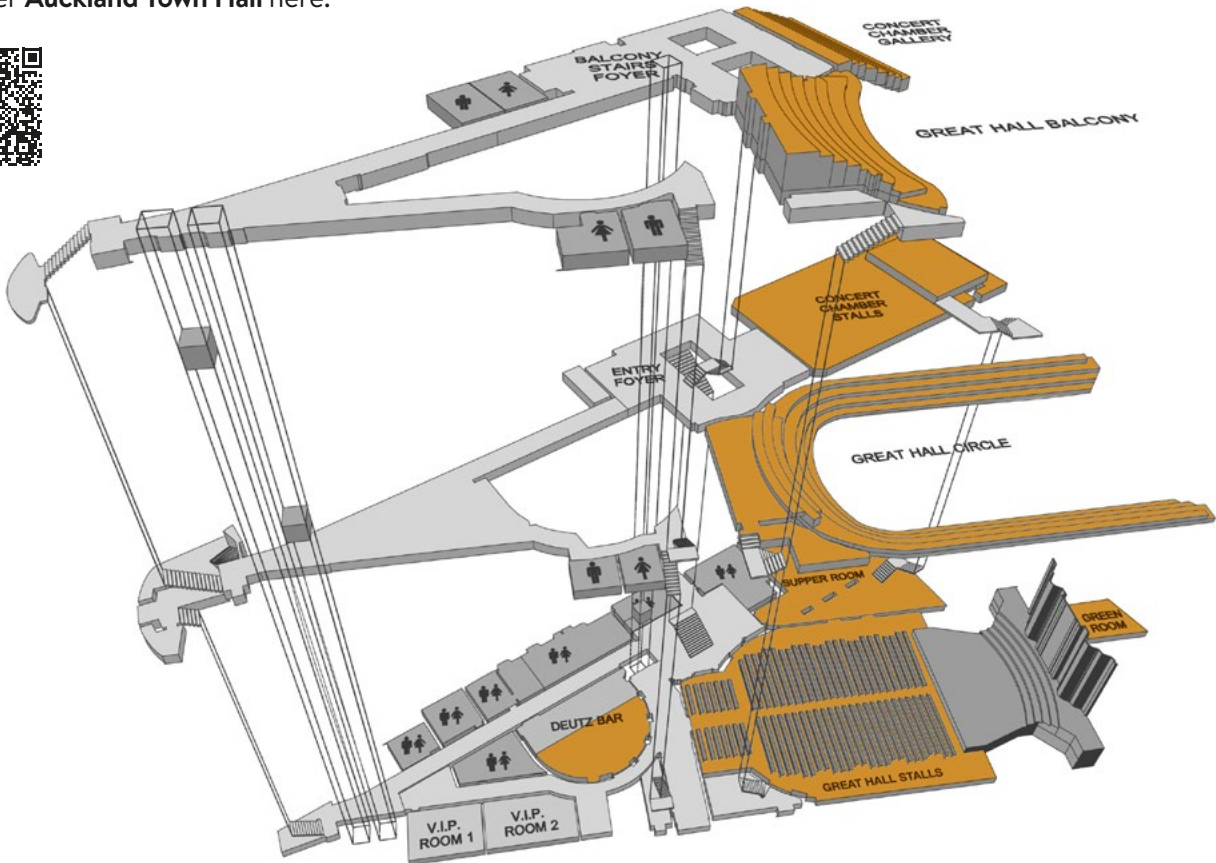
ROOMS	HEIGHT m	AREA m ²	THEATRE	BANQUET	COCKTAIL	CABARET	EXHIBITION
Exhibition Floor	Varied	2697m ²	2000	1750	2000	—	107
Lower Mezzanine	2.8m	228m ²	100	100	100	80	8
Upper Mezzanine	Varied	444m ²	230	190	230	144	11

Please note: All capacities are guidelines only and are based on the maximum use of the space available for standard setups. They may be reduced by staging, technical equipment, dance floors, type of menu being served or entertainment.

AUCKLAND TOWN HALL | HŌRO Ā-TĀONE O TĀMAKI MAKĀURAU

AUCKLAND
CONVENTIONS
venues & events

Discover **Auckland Town Hall** here.



LAVISH INTERIORS FOR ELEGANT EVENTS

Hōro ā-Tāone o Tāmaki Makaurau | Auckland Town Hall is a prestigious heritage venue perfect for gala dinners, business events, and more.

Built in 1911, the venue has hosted dignitaries and events of all kinds, from exhibitions and award ceremonies to school balls and launch parties. Its sophisticated design also accommodates custom theming, making it a flexible and elegant choice.

FEATURES

- Significant heritage building
- Central Auckland City location
- Close proximity to Aotea Centre, Aotea Square and The Civic
- Stunning Edwardian Baroque design
- Renowned for excellent acoustics
- Theatre quality technical facilities on-site
- Perfect for gala dinners, exhibitions, cocktail functions, award ceremonies and school balls



Concert Chamber



Great Hall



Great Hall



Great Hall

Capacity Chart

ROOMS	HEIGHT m	AREA m ²	THEATRE	CLASSROOM	CABARET	BANQUET	COCKTAIL	EXHIBITION
Great Hall	16m	550m ²	1529	272	288	360	670	40 booths
Supper Room	4.15m	275m ²	167	—	—	—	250	—
Deutz Bar	3.93m	105m ²	—	—	—	—	150	—
Concert Chamber	9.7m	375m ²	419	160	160	200	300	20 booths
Balcony Foyer	5.3m	—	—	—	—	—	200	—

Please note: All capacities are guidelines only and are based on the maximum use of the space available for standard setups. They may be reduced by staging, technical equipment, dance floors, type of menu being served or entertainment.

MOTAT AVIATION HALL

AUCKLAND
CONVENTIONS
venues & events

Discover MOTAT's Aviation Hall here.



THE ULTIMATE BACKDROP FOR YOUR EVENT

Taiwhanga Rererangi – Aviation Hall at MOTAT showcases a remarkable aircraft collection, offering both an exciting visitor experience and a unique venue for corporate functions. Welcome your guests under the nose of the Avro Lancaster Bomber, dine beneath the Solent and Sunderland flying boats and finish the evening taking in the spectacular view of the aircraft collection.

FEATURES

- Houses a significant aircraft collection
- Distinctive and flexible space
- Award winning catering providers
- Available for evening hire only
- On-site parking available
- Located close to the motorway and Auckland CBD



Capacity Chart

ROOMS	HEIGHT m	AREA m ²	BANQUET	COCKTAIL
Aviation Hall	Varied	425m ²	350*	500

Please note: All capacities are guidelines only and are based on the maximum use of the space available for standard setups. They may be reduced by staging, technical equipment, dance floors, type of menu being served or entertainment.

*Buffet style menus are limited to 300PAX.

AUCKLAND ZOO | TE WHARE KARAREHE O TĀMAKI MAKĀURAU

AUCKLAND
CONVENTIONS
venues & events



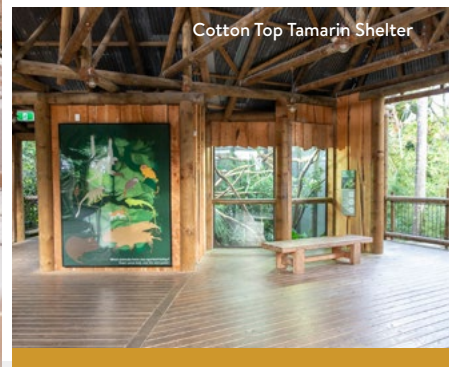
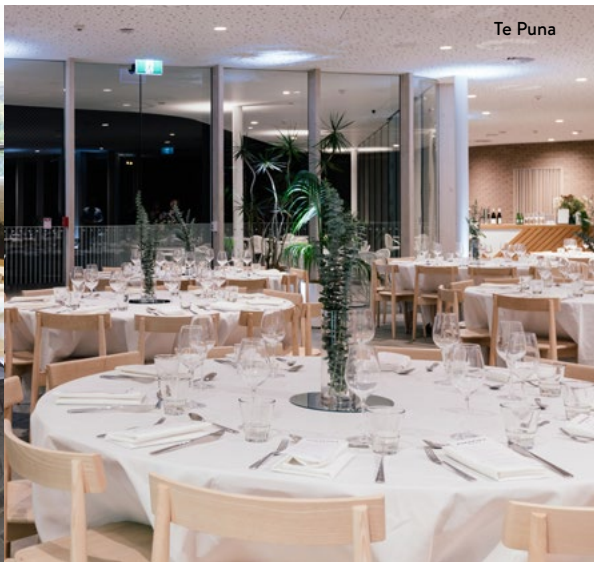
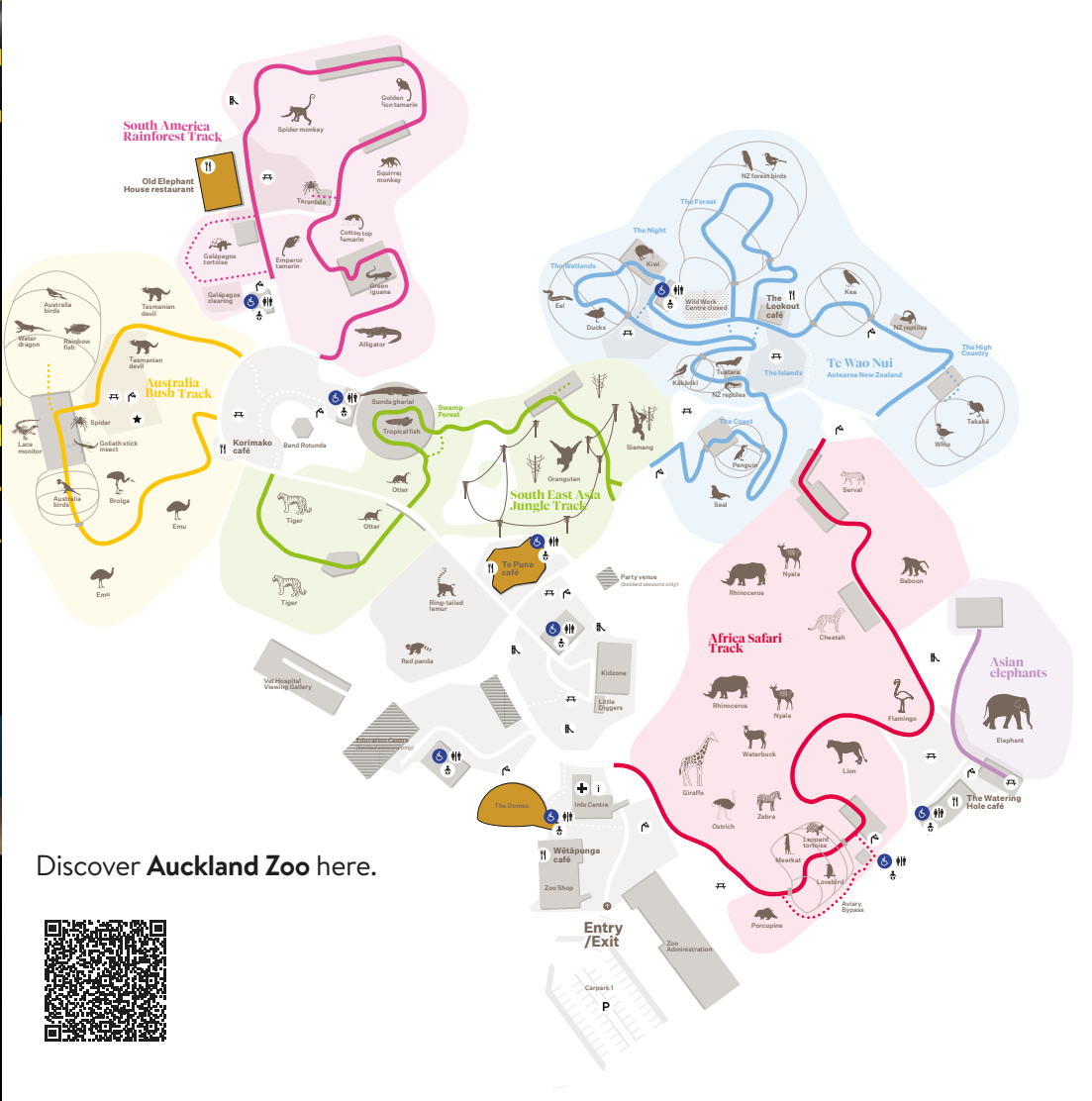
EXPERIENCE A VENUE LIKE NO OTHER

Auckland Zoo offers unforgettable event spaces with a focus on sustainability and a stunning wildlife backdrop, perfect for creating unique experiences.

With breathtaking landscapes and one-of-a-kind settings, Auckland Zoo ensures an event your guests will remember for years. Perfect for weddings, celebrations, functions, and corporate events, it's a venue that blends charm, sustainability, and the magic of wildlife.

FEATURES

- Access to explore the Zoo on the day of your event
- Distinctive and flexible spaces
- Located close to the motorway and Auckland CBD
- Available for day and evening bookings
- On-site parking available
- Award winning catering providers



Capacity Chart

ROOMS	HEIGHT m	AREA m ²	THEATRE	CLASSROOM	CAFE	CABARET	BANQUET	COCKTAIL
The Domes	Varied	740m ²	350	—	—	280	350	500
Te Puna*	3m	80m ²	150	130	—	120	150	250
Old Elephant House with Courtyard*	—	170m ²	—	—	120	—	—	160
Old Elephant House Courtyard**	—	70m ²	50	30	50	—	50•	80
Cotton Top Tamarin Shelter ***	—	Varied	40	—	—	—	—	60

Please note: All capacities are guidelines only and are based on the maximum use of the space available for standard setups. They may be reduced by staging, technical equipment, dance floors, type of menu being served or entertainment.

* Available for evening hire only ** Available for day hire only ***Available for wedding ceremonies and pre-function cocktails for evening hire only
• Only trestle tables are permitted in the courtyard.

AUCKLAND ART GALLERY TOI O TĀMAKI

AUCKLAND
CONVENTIONS
venues & events

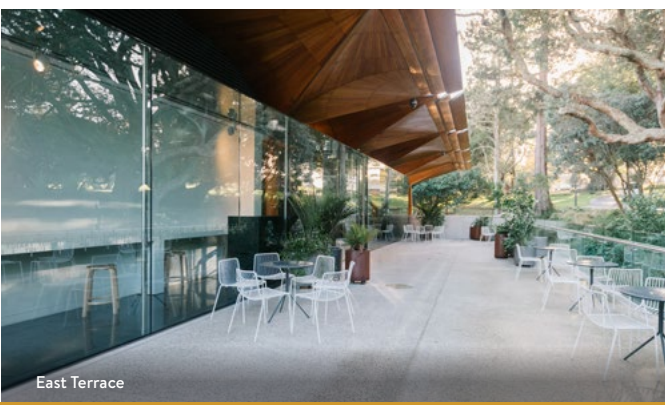
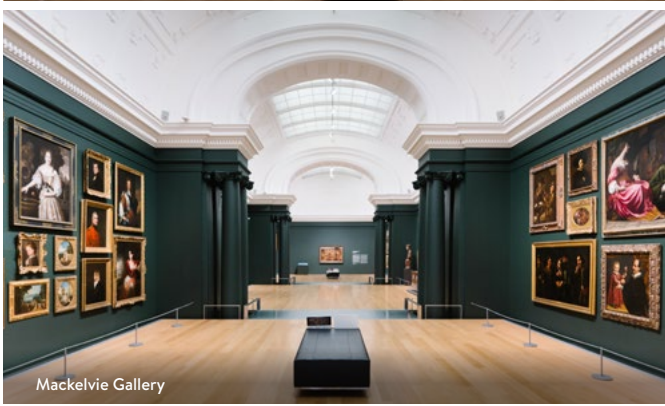
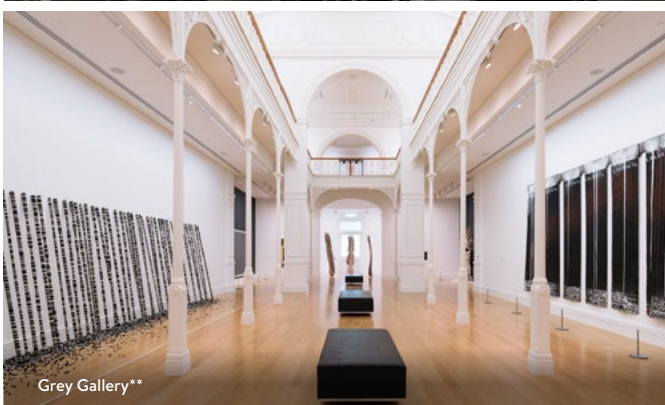
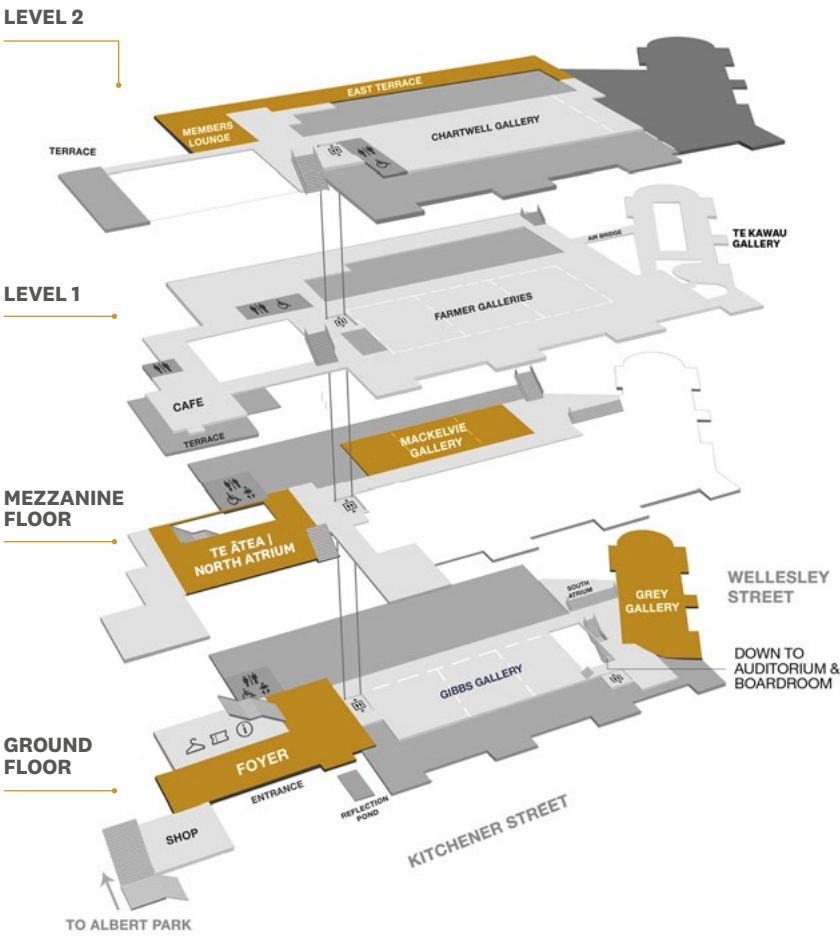


TRANSFORM YOUR EVENT INTO A MASTERPIECE

Combining modern and heritage architecture, Auckland Art Gallery Toi o Tāmaki is home to a permanent collection of 17,000 artworks. Transform your gala dinner, cocktail function or auditorium presentation into a masterpiece at one of the city’s most awe-inspiring settings. Situated on the edge of Albert Park, this award-winning heritage building seamlessly merges historical features with vibrant contemporary spaces, creating a unique and enchanting atmosphere for your event.

- FEATURES**
- Located in the heart of Auckland city
 - Celebrated mix of modern and heritage architecture
 - Award winning catering providers
 - Walking distance to a range of accommodation
 - Perfect choice for weddings and corporate functions
 - Paid parking facilities within walking distance
 - Option to include exclusive viewings of selected exhibitions

Discover **Auckland Art Gallery Toi o Tāmaki** here.



Capacity Chart

ROOMS	HEIGHT m	AREA m ²	THEATRE	BANQUET	COCKTAIL	BOARDROOM
Te Ātea North Atrium*	Varied	243m ²	160	130	250	–
Auditorium	Varied	–	150	–	–	–
Grey Gallery*	Varied	220m ²	80	80	120	–
Mackelvie Gallery*	Varied	270m ²	105	110	120	–
Boardroom	–	50.4m ²	30	–	–	16
East Terrace*	–	325m ²	–	–	250	–

Please note: All capacities are guidelines only and are based on the maximum use of the space available for standard setups.

They may be reduced by staging, technical equipment, dance floors, type of menu being served or entertainment.

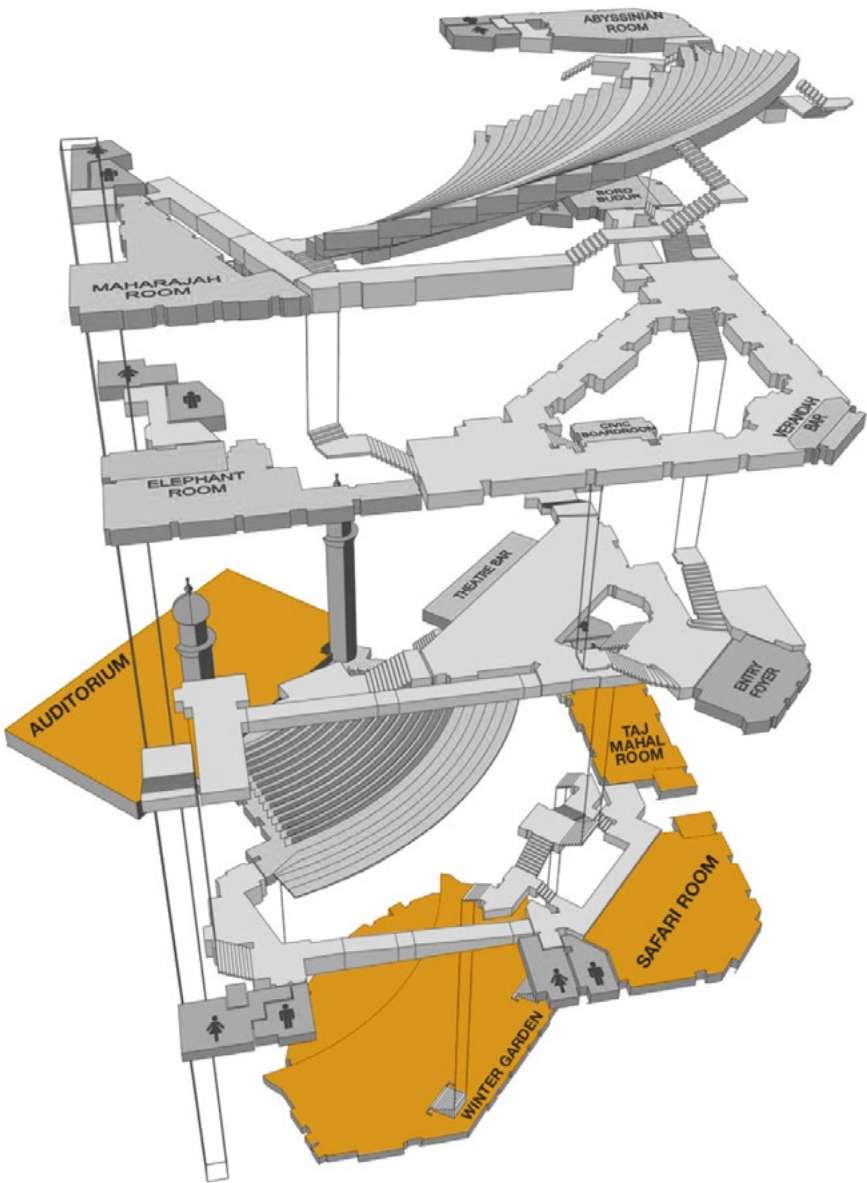
*Available for evening hire only.

** Taimoana | Coastlines: Art in Aotearoa, Auckland Art Gallery Toi o Tāmaki, 2024.

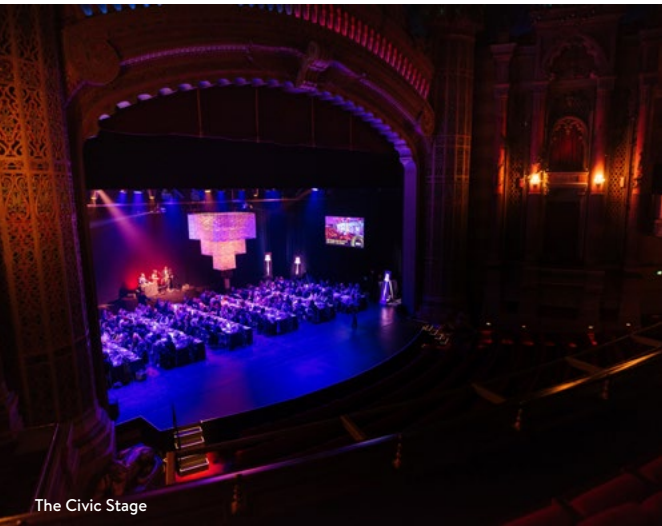
THE CIVIC | TE CIVIC

AUCKLAND
CONVENTIONS
venues & events

Discover **The Civic** here.



The Civic Foyer



The Civic Stage



Wintergarden

OPULENCE IN THE HEART OF THE CITY

The Civic is an opulent and unique venue, perfect for gala dinners, cocktail parties, ceremonies, and awards events. Sweeping double staircases, smaller rooms and extensive circulation space around the ornate bars make The Civic well suited for intimate and large events like cocktail functions, banquet dinners, pre-show cocktails and more.

FEATURES

- Central Auckland city location
- Domed ceiling with spectacular starscape
- Four unique spaces to choose from
- Moorish design with turrets, minarets and spires
- Award winning catering providers
- Ability to host an event on The Civic Auditorium Stage

Capacity Chart

ROOMS	HEIGHT m	AREA m ²	THEATRE	U-SHAPE	CLASSROOM	CABARET	BANQUET	COCKTAIL
The Civic Auditorium	24m	1990m ²	2378	—	—	—	—	—
The Civic Stage	—	—	—	—	—	—	210	300
Wintergarden	4m	550m ²	428	—	292	256	320	525
Safari Room	2.75m	160m ²	70	28	40	64	80	80
Taj Mahal Room	4m	110m ²	63	28	40	40	50	70

Please note: All capacities are guidelines only and are based on the maximum use of the space available for standard setups. They may be reduced by staging, technical equipment, dance floors, type of menu being served or entertainment.

BRUCE MASON CENTRE

AUCKLAND
CONVENTIONS
venues & events



VERSATILE VENUE AT A TRANQUIL BEACHSIDE LOCATION

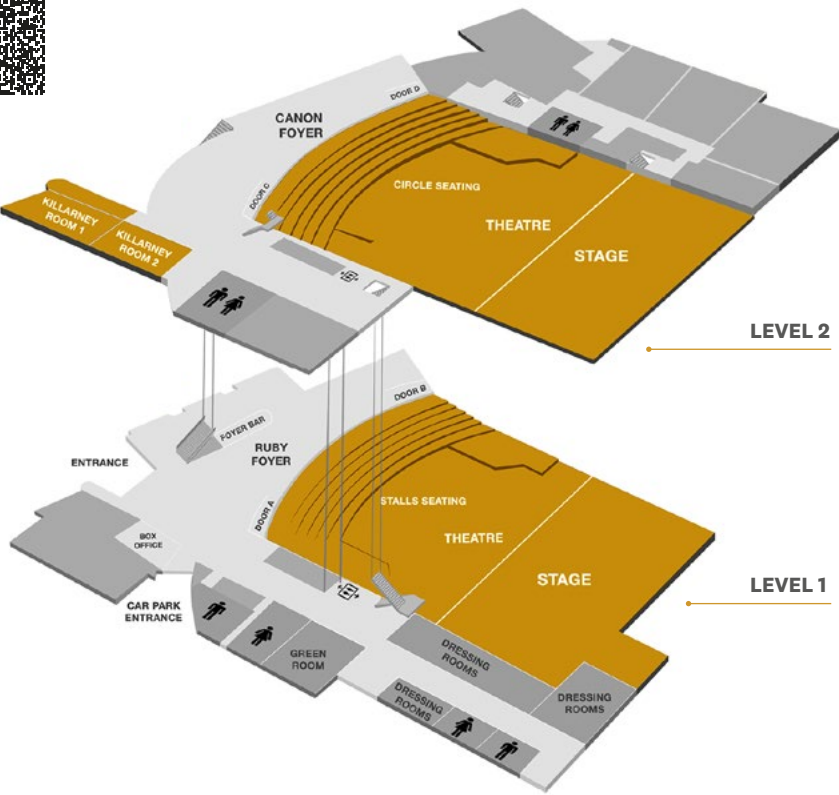
Escape the city and host your next event in the tranquil, beachside setting of the Bruce Mason Centre.

Located in the heart of the bustling seaside community in Takapuna, just steps from the stunning beach and a variety of restaurants, shops, and accommodation, the venue offers a relaxed yet sophisticated atmosphere for both corporate and private functions.

FEATURES

- Theatre with tiered seating
- Theatre transforms for dramatic gala dinners
- Tranquil beach side location
- Escape the hustle and bustle of the city
- Only 15 minutes from Auckland's city centre

Discover **Bruce Mason Centre** here.



Capacity Chart

ROOMS	HEIGHT m	AREA m ²	THEATRE	CLASSROOM	U-SHAPE	CABARET	BANQUET	COCKTAIL	EXHIBITION
Theatre Stalls & Circle	—	—	1070	—	—	—	—	—	—
Flat Floor & Terraces	—	1200m ²	—	—	—	—	406	820	—
Killarney Room 1	3m	75m ²	52	24	15	24	30	50	4
Killarney Room 2	3m	51m ²	40	15	9	16	20	30	2
Killarney Room 1 & 2	3m	126m ²	84	36	—	48	50	90	7
Ruby Ormiston Foyer	—	350m ²	—	—	—	—	—	350	8
Cannon Gallery	—	200m ²	—	—	—	—	—	150	6

Please note: All capacities are guidelines only and are based on the maximum use of the space available for standard setups. They may be reduced by staging, technical equipment, dance floors, type of menu being served or entertainment.

NORTH HARBOUR STADIUM

AUCKLAND
CONVENTIONS
venues & events



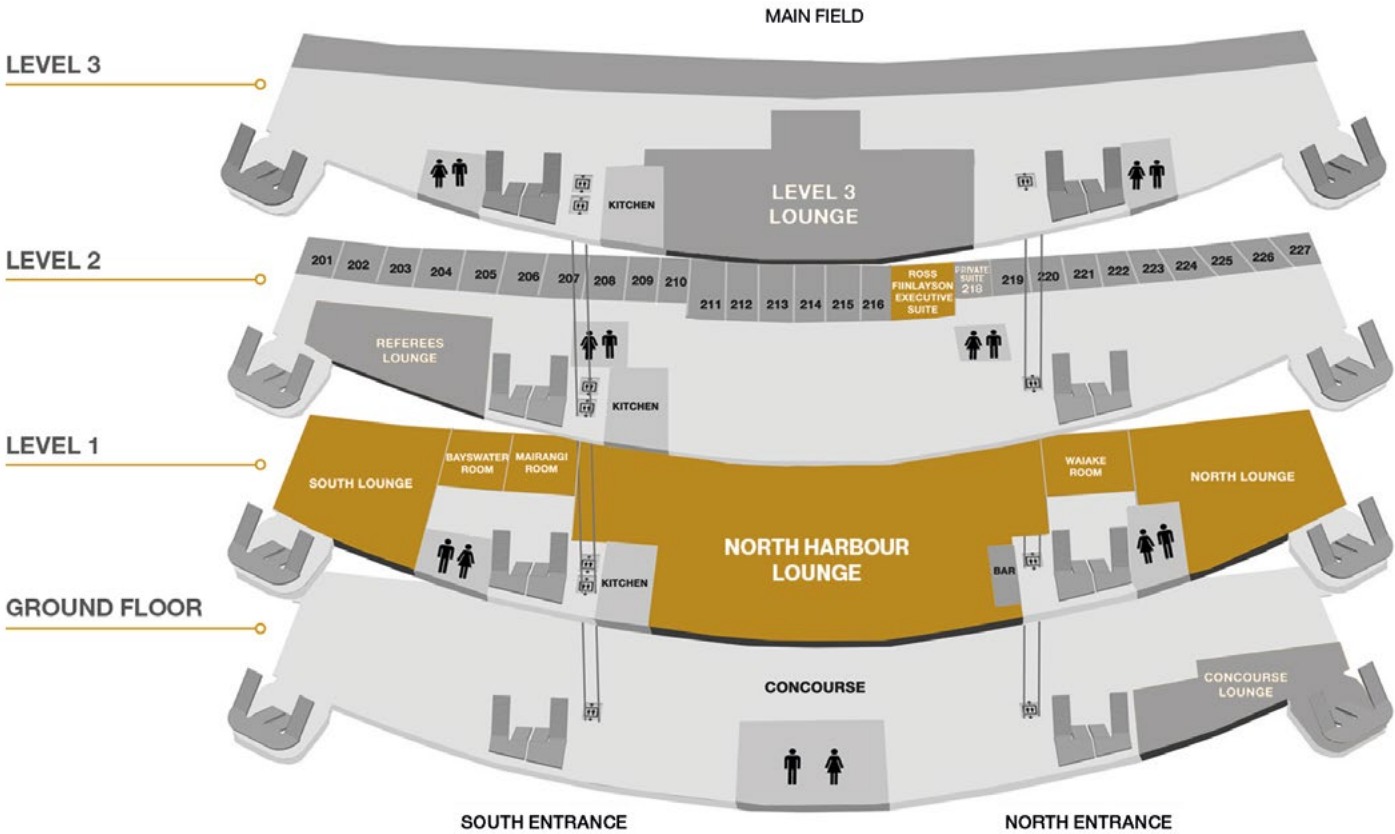
A VERSATILE VENUE FOR YOUR NEXT EVENT

Located on Auckland’s North Shore, North Harbour Stadium offers a versatile venue in a dynamic sporting setting, ideal for banquets, corporate events, cocktail functions, and more.

From private suites for intimate meetings to larger rooms for conferences, school balls, and gala dinners, or even an entire floor for exhibitions and product launches, the stadium caters to a variety of event needs.

FEATURES

- 7 versatile spaces
- Floor to ceiling glass windows
- Views across the main stadium field
- Soundproof room dividers available on Level 1
- Cocktail function capacity for 1,000
- 1,200 free car parks available on-site
- Close to major transport routes
- Located in Albany, 30 mins from Auckland’s CBD



Ross Finlayson Executive Suite



South Lounge



North Harbour Lounge

Capacity Chart

ROOMS	HEIGHT m	AREA m ²	THEATRE	CLASSROOM	U-SHAPE	CABARET	BANQUET	COCKTAIL	EXHIBITION
North Harbour Lounge Level 1	2.65m	974m ²	697	207	—	368	500	1000	98
North Lounge Level 1	2.65m	327m ²	240	84	34	152	190	350	23
South Lounge Level 1	2.65m	248m ²	180	92	32	112	150	300	17
Bayswater & Mairangi Room Level 1	2.65m	135m ²	100	40	30	64	80	120	10
Bayswater Room Level 1	2.65m	68m ²	50	16	18	32	40	75	6
Mairangi Room Level 1	2.65m	68m ²	50	16	18	32	40	75	6
Waiake Room Level 1	2.65m	68m ²	50	16	18	32	40	75	6
Ross Finlayson Executive Suite Level 2	2.32m	55m ²	—	—	14	—	30	40	—

Please note: All capacities are guidelines only and are based on the maximum use of the space available for standard setups. They may be reduced by staging, technical equipment, dance floors, type of menu being served or entertainment.

GO MEDIA STADIUM

AUCKLAND
CONVENTIONS
venues & events

Discover Go Media Stadium here.



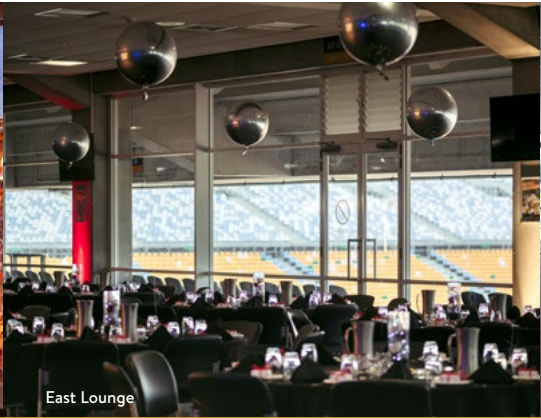
A DISTINCTIVE BACKDROP FOR YOUR NEXT EVENT

Go Media Stadium is a versatile venue offering flexible spaces for exhibitions, conferences, meetings, and more, with ample parking to accommodate your guests. Known for hosting world-class sports, concerts, and athletics events, the stadium also provides unique settings to create unforgettable experiences.

- FEATURES**
- Unique sporting atmosphere
 - Impressive views over playing fields
 - On-site parking facilities
 - Close to major transport routes
 - Plenty of natural light
 - 3kms to Auckland Airport
 - Flexible spaces to suit all event types
 - Located in Penrose



Go Media Stadium



East Lounge



John Walker

Capacity Chart

ROOMS	HEIGHT m	AREA m ²	THEATRE	CLASSROOM	CABARET	BANQUET	COCKTAIL	EXHIBITION
Full East Lounge (East & South Lounges)	3.5m	1257m ²	900	336	520	650	1000	87 booths
East Lounge	3.5m	945m ²	700	240	400	480	700	—
South Lounge	3.5m	312m ²	200	84	160	200	300	—
John Walker Lounge	2.7m	311m ²	250	60	152	190	250	—

Please note: All capacities are guidelines only and are based on the maximum use of the space available for standard setups. They may be reduced by staging, technical equipment, dance floors, type of menu being served or entertainment.

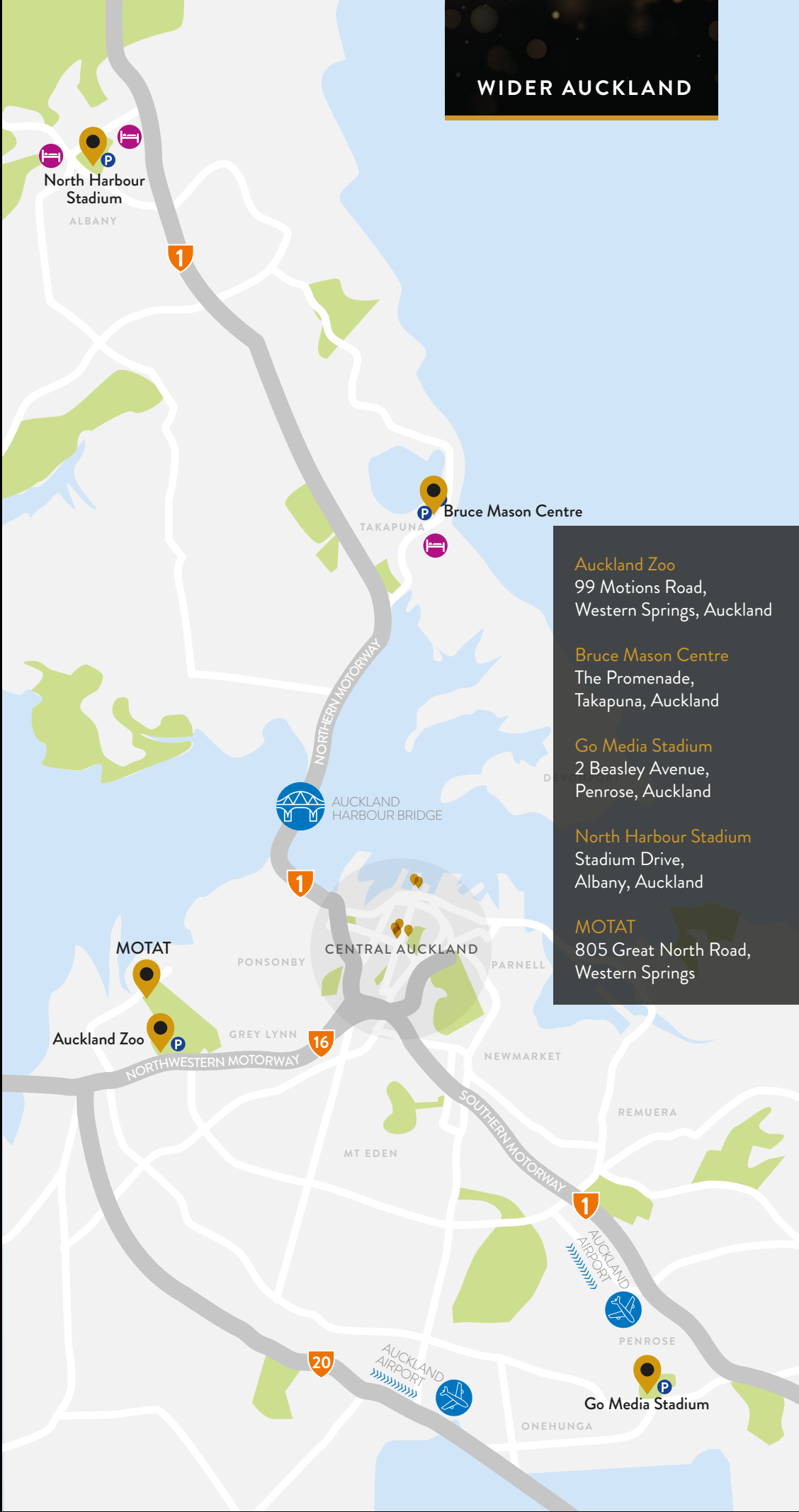
CENTRAL AUCKLAND
KEY

- Auckland Conventions' Venues
- Accommodation
- Parking Facilities



- Aotea Centre**
50 Mayoral Drive, Auckland
- Auckland Art Gallery**
Toi o Tāmaki
Corner of Kitchener & Wellesley Streets, Auckland
- Auckland Town Hall**
305 Queen Street, Auckland
- Shed 10**
89 Quay Street, Auckland
- The Civic**
Corner Queen Street & Wellesley Street, Auckland
- The Cloud**
89 Quay Street, Auckland
- Viaduct Events Centre**
161 Halsey Street, Wynyard Quarter

WIDER AUCKLAND



- Auckland Zoo**
99 Motions Road, Western Springs, Auckland
- Bruce Mason Centre**
The Promenade, Takapuna, Auckland
- Go Media Stadium**
2 Beasley Avenue, Penrose, Auckland
- North Harbour Stadium**
Stadium Drive, Albany, Auckland
- MOTAT**
805 Great North Road, Western Springs

OUR SERVICES

With an experienced and specialised team, state-of-the-art facilities and equipment, and a comprehensive range of in-house services, Auckland Conventions is passionate about catering for every event requirement.

EVENT PLANNING

A dedicated Event Planner is assigned to partner with you for every event. They are your point of contact for providing ideas, answering questions and looking after every detail to ensure the successful delivery of your event.

TECHNICAL SERVICES

From lighting design to audio visual support, our technical team offers the experience and technical capability to turn your creative vision into reality.

CATERING

We partner with some of Auckland's finest, award winning food and beverage specialists to create exceptional menus to suit your working lunch, cocktail function, gala dinner and more.

SECURITY SERVICES

Our security services team ensures a safe and enjoyable environment is maintained throughout our venues and events, providing safety and security assistance where necessary.

THIS PAGE

'Untitled' by Paratene Matchitt,
Aotea Centre. Photo by Sacha Stejko.

BACK COVER

The Civic. Photo by David Straight.

IMAGE PHOTOGRAPHY

Michael Bradley, Jinki Cambroner, Jay Farnworth,
Caren Hastings, Tom Hollow, Heath Johnson /
Deft Photography, Ivan Muller, Murray Lloyd Photography, Hannah
Peters, David St George, Bas van Est, David Watson, David Straight.

Nga mihi



NEW ZEALAND'S LARGEST PORTFOLIO OF CELEBRATED VENUES

Level 4, Aotea Centre, 50 Mayoral Drive, Auckland 1010, New Zealand
PO Box 5749, Victoria Street West, Auckland 1142, New Zealand

T 0800 54 98 98 | +64 9 309 2677 | 1800 54 98 98 (AUST)

E events@aucklandconventions.co.nz

W aucklandconventions.co.nz

**AUCKLAND
CONVENTIONS**
venues & events