



**Auckland Art Gallery Toi o Tāmaki**

PO Box 5449, Auckland 1141  
Ph (09) 307 7700 Infoline (09) 379 1349

New Gallery: Cnr Wellesley and Lorne Sts

Auckland Art Gallery's main building is now closed for development. Exhibitions and events will continue at the New Gallery across the road, cnr Wellesley and Lorne Sts

**Open daily 10am to 5pm except Christmas Day and Easter Friday. Free guided tours 2pm daily. Free entry. Admission charges apply for special exhibitions.**

[www.aucklandartgallery.govt.nz](http://www.aucklandartgallery.govt.nz)

**Discount parking** – \$4 all day, weekends and public holidays, Victoria St carpark, cnr Kitchener and Victoria Sts. After parking, collect a discount voucher from the gallery

**For bus, train and ferry info** phone MAXX on (09) 366 6400 or go to [www.maxx.co.nz](http://www.maxx.co.nz)

**The Link** bus makes a central city loop [www.stagecoach.co.nz/thelink](http://www.stagecoach.co.nz/thelink)

ARTG-0009-serial



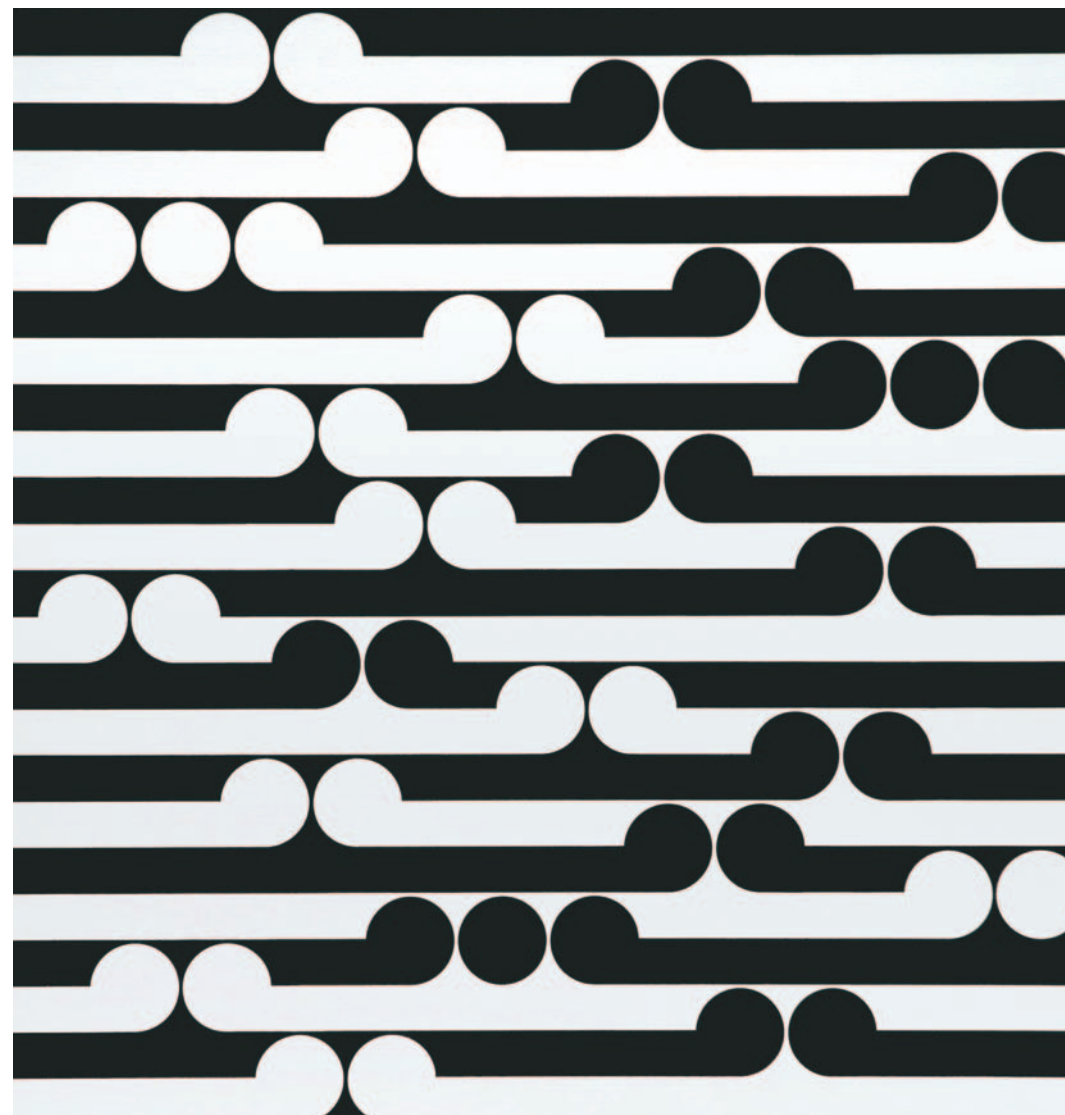
# On Show

FREE



## EXHIBITIONS & EVENTS AT AUCKLAND ART GALLERY TOI O TĀMAKI

AUGUST / SEPTEMBER / OCTOBER 2008 // FREE // [www.aucklandartgallery.govt.nz](http://www.aucklandartgallery.govt.nz)



On Show  
Designed by Inhouse  
Edited by Eran Donders  
ISSN 1177-4614

Auckland Art Gallery Toi o Tāmaki relies on the good will and generosity of corporate partners. We are delighted to acknowledge their ongoing support.

**ERNST & YOUNG**

**Simpson Grierson**

**Deutsche Bank**

**SAATCHI & SAATCHI**

**AUT**

**LEXUS**

**HOTEL**

**BECK'S**

**aa|to  
COLOUR**

Proudly printed by

**GEON**

Gordon Walters Maheno 1981,  
acrylic on canvas, Auckland  
Art Gallery Toi o Tāmaki,  
purchased 1982

## From the Director

As regular readers will know, for sometime I have normally begun this column with an update on the gallery's long-planned building development project. In the last issue, I indicated we were on the edge of commencing construction, pending the required resource consents. Well, we are still balancing on that same metaphorical edge, three months on from my last column, but the balance is at last tipping us toward a resolution.

At the time of writing, we are finalising the detail of some conditions newly attached to the 'in-principle' resource consents we obtained in a December Environment Court ruling, and I remain hopeful that these can be resolved within coming weeks. I recognise this is a frustrating degree of inching progress, particularly with the main building closed to the public since March, but we are doing everything in our power to move this project forward.

The gallery's programme continues unabated at the New Gallery with a strong line-up of exhibitions and public events, including the 2008 Walters Prize. In that context, I am thrilled to announce this year's visiting judge is to be Paris-based curator and writer Catherine David. Catherine has worked at the National Museum of Modern Art



Chris Saines,  
Director,  
Auckland Art  
Gallery  
Toi o Tāmaki

at the Centre Georges Pompidou (1982-90), the Galerie National du Jeu de Paume (1990-94), and the Witte de With centre for contemporary art in Rotterdam (2002-04).

She is highly regarded for her groundbreaking role as director of documenta X, in 1997, and for her acclaimed touring project *Contemporary Arab Representations 1 and 2*, produced in association with the Tāpapa Foundation in 2003. More recently, she was a Fellow of the Wissenschaftskolleg zu Berlin (2005-06), where she worked toward a project entitled *Di/Visions: Culture and politics of the Middle East*, and was given an award for curatorial excellence from the Centre for Curatorial Studies at Bard College (2008).

I look forward to the opening of the 2008 Walters Prize exhibition in September, our fourth, and to Catherine David's visit in late October. Her guest lecture on 30 October, presented with the assistance of AUT University, promises to be a highlight, as does the gala dinner on October 31. I hope you can continue to be part of the gallery's community of support through a time of substantial change and challenge for us. Your support is of immense encouragement to us.

Chris Saines

# Welcome to Auckland Art Gallery

It's your gallery. It's free and it's in the heart of Auckland City

**EXPLORE** Our collection is the finest in the country with 14,000 works spanning seven centuries. Free guided tours are held daily at 2pm.

**RELAX** Catch up with friends at Reuben café overlooking Khartoum Place.

**ENJOY** Don't miss the super sale at our gallery shop. Hundreds of items are reduced to clear.

**AMUSE** Children are welcome and there's plenty to keep small hands busy in our Kids Club and holiday art programmes.

**DISCOVER** Like to know more about art? We hold a mix of interesting events throughout the year. Come along and learn something new.

**JOIN** Become a Friend of the Gallery and open the door to a stimulating world of art and artists.

Admission charges apply for special exhibitions.



# News



Left: artist impression of an exhibition space in the main gallery  
Below: painting conservator Ingrid Ford



ERY DEVELOPMENT / MARIE BALTUSOVA / CONSERVATION GRANT / GALLERY DEVELOPMENT / MARIE BALTUSOVA / CONSERVATION GRANT / GALLERY DEVELOPMENT

## GALLERY DEVELOPMENT

The Auckland Art Gallery's development project is continuing with the Environment Court finalising its conditions of consent. This process has required Auckland City Council to provide the court with specific details surrounding the masterplan area – the landscaped area between the gallery building and Albert Park. Once the court is satisfied with the conditions of consent, the council can move into the construction phase of the project.

## MARIE BALTUSOVA

The gallery has appointed Marie Baltusova as an LEOTC Educator to assist its education programme. Marie hails from Brno, in the Czech Republic, where she was an art teacher to the visually impaired – a role that included working with the National Gallery of Brno. Marie says the most rewarding part of her role is introducing children to art and watching them expand their understanding of the world as a result. "I enjoy teaching children to make their own art as it expands their horizons and helps them to express themselves," Marie says.

## CONSERVATION GRANT

Painting conservator Ingrid Ford will attend a five-day workshop at the Centre for Contemporary Art Conservation, Gallery of Modern Art in Brisbane. Ingrid received a grant from Creative New Zealand, as well as funding from the gallery to attend the workshop 'New Methods for Cleaning'. The field of conservation continually grows and expands its knowledge of materials and research, with Europe and the United States often paving the way. "This is a rare opportunity for us in the southern hemisphere to be able to participate in a workshop of this calibre and intensity," Ingrid says.

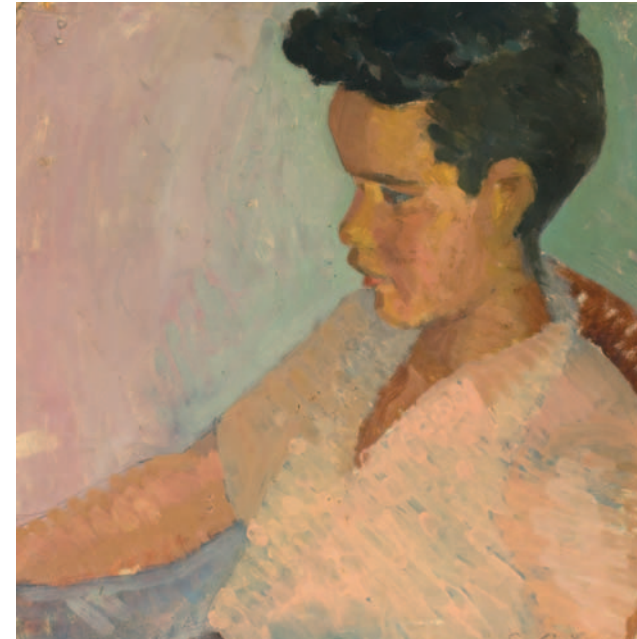
# Turuki Turuki! Paneke Paneke!

UNTIL 24 AUGUST

NEW GALLERY

Adult \$7 Concession \$5,  
Families \$18, Under 5s free.  
Free on Mondays.

Below left: Selwyn Wilson  
*Study of a head* 1948



As *Turuki Turuki! Paneke Paneke! When Maori Art Became Contemporary* draws to an end, Auckland Art Gallery Indigenous Art curator Ngahiraka Mason, reflects on the groundbreaking show that marked a cultural renaissance and the beginnings of the contemporary Māori art movement.

*Turuki Turuki! Paneke Paneke!* commemorates and celebrates an exhibition that could have easily gone unnoticed by art historians if it had not been for

a contemporary review entitled 'Māori fullback goes in for abstract painting' that appeared in the *Auckland Star*.

The modest original exhibition – featured the work of Ralph Hotere, Katerina Mataira, Muru Walters, Arnold Wilson and Selwyn Wilson – took place in the Princes Street Adult Education rooms at The University of Auckland, 50 years ago. It had no title, no curator or named venue and the artists were practically unknown at the time.

However, visitors to that inaugural show recognised the artists clearly defined another kind of Māori art, not seen before. Hotere, Mataira, Walters, Arnold Wilson and Selwyn Wilson, all of whom had tertiary level education in art teaching or fine art training, represented a new generation of Māori artists who drew on their backgrounds as teachers, visual artists and craftspeople, as well as their deeper cultural histories and identities to create a contemporary indigenous art movement.

*Turuki Turuki! Paneke Paneke!* presents art work from the original exhibition and other works sourced from the late 1950s and early 1960s that captures the turning point when Māori art became contemporary and acknowledges the place these five artists hold as pioneers and innovators in their fields.

*On Show* printed an incorrect image and image credit in our last edition. The artwork was misidentified and wrongly credited to Selwyn Wilson. We regret this error and apologise to Jim Allen and to Selwyn Wilson's family.

August, September, October 2008

# the walters prize 2008

The Walters Prize is New Zealand's premium visual arts award that celebrates excellence in contemporary art.

Named in honour of artist Gordon Walters, a pioneering modernist painter, the Walters Prize was established in 2002 to raise the profile of New Zealand's contemporary art works and artists. Past winners of the Walters Prize are Yvonne Todd

(2002), Et Al (2004) and Francis Upritchard (2006).

Every two years a national jury of critics and curators selects four bodies of work by prominent artists to exhibit at Auckland Art Gallery's New Gallery from which an internationally renowned judge selects the artist who receives the Walters Prize. The 2008 Walters Prize jurors, Jon Bywater,

Elizabeth Caldwell, Andrew Clifford and Rhana Davenport, recommended four outstanding art projects: Edith Amituanui's *Déjeuner*, Lisa Reihana's *Digital Marae*, John Reynolds' *Cloud* and Peter Robinson's *ACK*.

This year's Walters Prize judge is Catherine David, an independent curator, who began her career at the

13 SEPTEMBER  
TO 23 NOVEMBER

NEW GALLERY

Exhibition Entry Applies

From left to right: Edith Amituanui  
House of Manu 2007, Lisa Reihana  
Maui 2007 from Digital Marae, John  
Reynolds Cloud 2006, Peter Robinson  
Installation view of ACK 2006

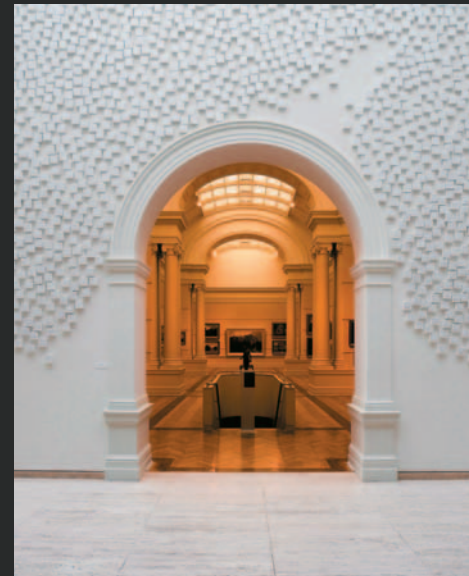
National Museum of Modern Art at the Centre Georges Pompidou and Galerie National du Jeu de Paume, Paris. Between 1994 and 1997, she was a director of documenta X and was former director of Witte de With in Rotterdam. The Center for Curatorial Studies at Bard College presented David with the Award for Curatorial Excellence, earlier this year. David was noted for her

collaborations between institutions in the Arab world and the art world. Her acclaimed project, *Contemporary Arab Representations 1 and 2*, encouraged an invaluable exchange between these different spheres.

Catherine David will announce the 2008 Walters Prize winner at a gala dinner on Friday, 31 October 2008. For booking

enquires phone Carla Frater on (09) 375 3365 or email carla.frater@aucklandcity.govt.nz

The winner will receive \$50,000 and an all expenses paid trip to New York with an opportunity to exhibit their work at Saatchi & Saatchi's world headquarters.



# In Shifting Light

11 OCTOBER 2008  
TO 12 APRIL 2009

NEW GALLERY

Free Admission

Colin McCahon *Takaka: Night and Day* 1948



The art works featured *In Shifting Light* represent how different artists have responded to New Zealand landscapes – landscapes of history and imagination, landscapes that contain public and personal symbols and landscapes as sites of social and personal experiences. As such, the exhibition concerns itself with meanings of landscapes and reminds us that landscape in art is essentially a social construct.

New Zealand and Pacific Art, senior curator, Ron Brownson says, that throughout the 19th and early 20th centuries, the diverse landscapes of New Zealand were a principal theme within our visual art.

Many painters were fascinated with our landscape's shifting and diverse lighting situations. They contrasted time of day with the specifics of place. This exploration let artists encounter New Zealand's topographic drama.

"When James Trevithick looked shoreward in his remarkable painting *Auckland Harbour by Moonlight, from the North Shore* (1881), he had no pre-conception that this nightscape would become one of the first visions of a moonlit Auckland. Generations later, Buster Black would reveal how mystical the city's street lighting appears when

viewed from the Waitakere Mountains," says Brownson.

This collection-based exhibition brings together 40 works across a variety of medium including a poignant Ans Westra photograph taken at the Early Settlers Museum in Dunedin, the mysterious video and CAD topographies of Mladen Bizumic and paintings by Charles F Goldie, Ralph Hotere and Colin McCahon. These works reflect landscapes as sites through which to define ourselves as a people and place – light and darkness conveys the spiritual and emotional responses to these sites.

# Friends of the Gallery

## Join Friends of the Gallery

Friends of the Gallery, formed in 1954, are a non-profit organisation dedicated to promoting the Auckland Art Gallery and encouraging interest in the visual arts. Friends' members enjoy participating in gallery-based programs such as special viewings of exhibitions and lectures, along with visiting

dealer galleries and artists' studios. Friends also support the Auckland Art Gallery through 'adopting' art works for conservation and contributing as a group to the acquisition of new art works, including New Zealand paintings and sculptures. Membership privileges include reduced admission fees to the

gallery and a variety discounts. Membership fees: single \$35 a year or \$80 for three years, double/family \$50 a year \$130 for three years, students \$18 for year.

For more information, email: [galleryfriends@aucklandcity.govt.nz](mailto:galleryfriends@aucklandcity.govt.nz) or phone secretary Leigh Ogier on (09) 307 7705.

## Pat Hanly Student Membership Awards

The annual Pat Hanly Student Membership Awards recognise students who have shown outstanding commitment and passion for the visual arts and community awareness.

Each year, the Friends of the Gallery invite Auckland secondary school art teachers to nominate one Year 13 student to receive the award, which includes a certificate, two-year Friends' membership and art supplies sponsored by Gordon Harris: The Art and Graphic Store and The Varuna Trust.

The nominated students are also invited to attend an awards function in August with their parents, teachers and school



Above [Left to right] Siran Li, Nina Lloyd, Jack Feltham, Frances Ferguson, Chris Kinzett, Frances Cooper, Amy Yalland standing in front of Pat Hanly's *New Order 29 part II* – at the Pat Hanly Student Membership Awards last year.

principals. This year, Auckland secondary schools also have the opportunity to nominate a student with Pacific Island heritage for a two-year membership to the Friends sponsored by the Tautai Contemporary Pacific Arts Trust.



## The 2008 Walters Prize

### Artist Discussions



Walters Prize finalist Edith Amatuanai (above) and artist Sriwhana Spong. *New gallery – exhibition entry charge* Sunday 21 September 1pm



Walters Prize finalist, Lisa Reihana (above) and artist Judy Darragh. *New gallery – exhibition entry charge* Sunday 14 September 1pm



Walters Prize finalist John Reynolds (above) and musician, critic, illustrator, and author Chris Knox. *New gallery – exhibition entry charge* Sunday 14 September 3pm



Walters Prize finalist Peter Robinson (above) and Brian Butler, director of ARTSPACE. *New gallery – exhibition entry charge* Sunday 28 September 3pm

### Public Events



Award-winning architects Jeff Fearon and Tim Hay discuss the Walters Prize and issues facing contemporary artists and designers in New Zealand. *New gallery – exhibition entry charge* Sunday 12 October 3pm

Senior curator, New Zealand and Pacific Art, Ron Brownson talks with the 2008 Walters Prize winner. *New gallery – exhibition entry charge* Sunday 2 November 1pm

Senior curator, New Zealand and Pacific Art, Ron Brownson (left) conducts a tour of the 2008 Walters Prize exhibition. *New Gallery – Friends of the Gallery – no charge, non-members \$10 (includes exhibition entry fee).* Tuesday 23 September 1pm <sup>F</sup>

Art critic, writer and senior curator at the Christchurch Art Gallery, Justin Paton offers his insight on contemporary art focusing on the practice of this year's Walters Prize artists. *New gallery – exhibition entry charge* Sunday 19 October 1pm

Auckland Art Gallery's curator of Contemporary Art, Natasha Conland, gives an insight into the judge's choice of the 2008 Walters Prize recipient. *New gallery – exhibition entry charge* Sunday 9 November 3pm

Senior curator, City Gallery Wellington, Heather Galbraith discusses the work of the four finalists in this year's Walters Prize. *New gallery – exhibition entry charge* Sunday 5 October 1pm

2008 Walters Prize jury members Jon Bywater, Elizabeth Caldwell, Rhana Devenport, Andrew Clifford give a panel discussion on how they chose the four finalists. *New gallery – exhibition entry charge* Saturday 1 November 1pm

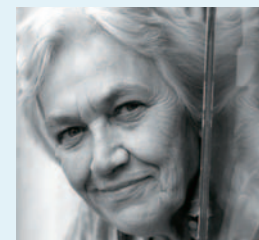
## Winter Warmers

Enjoy a hot cuppa while listening to painters, poets, writers, playwrights, arts facilitators and dancers talk about and demonstrate their work.

Poetry reading from authors Raewyn Alexander and Iain Britton – whose first collection of poems *Hauled Head First into a Leviathan* received a Forward Poetry Prize nomination for 2008/9. *Art Lounge – gold coin donation* Saturday 2 August 2pm to 4pm

Auckland-based performance poetry group, The Literatti discuss their unique mix of multiple poetic voices in a fusion of poetry, music and theatre. Los Angeles-based rap and spoken word artist Ed Mecija talks about his career. *Art Lounge – gold coin donation* Saturday 9 August 2pm to 4pm

The Oryza Foundation for Asian Performing Arts will hold a panel discussion and live presentation on their first project, *Asian Tales*. Followed by a talk by Thomas Sainsbury, a writer and director. *Art Lounge – gold coin donation* Saturday 16 August 2pm to 4pm



Writer Riemke Ensing (left), currently an Honorary Research Fellow (English) at The University of Auckland and Michael Steven the author of the chapbook *Homage to Robert Creeley* discusses poetry, art and publishing. *Art Lounge – gold coin donation* Saturday 23 August 2pm to 4pm

Two New Zealand filmmakers Shuchi Kothari, co-writer of *Apron Strings*, and Roseanne Liang, writer and director of *Take 3*, discuss their work. *Art Lounge – gold coin donation* Saturday 30 August 2pm to 4pm

## Readings at the Gallery

Celebrate Book Month with writers and poets reading from and discussing their recent work at Auckland Art Gallery's Art Lounge this September.

Graham Reid, Paul Shannon, Liz McEneaney, Janet Charman and Elizabeth Connell read from selective works, while Siobhan Harvey and Kirsten Warner give a poetry performance. *Art Lounge – free* Saturday 6 September 1pm to 4pm

Lindsey Dawson, Jean Allen, Lindy Davis, Jacqueline Ottaway, Julia Brannigan, Denys Trussell, Thea Gilich read from selected works. *Art Lounge – free* Saturday 20 September 1pm to 4pm

Performance and page poet, Miriam Barr presents a collective reading and Alistair Paterson, ONZM for services to literature, will read from his latest poetry book. *Art Lounge – free* Saturday 13 September 2pm to 4pm

Tessa Duder, Melinda Szymanik, Nick Marsden, Diana Harris, Rosetta Allan, Juliet Batten, Jocelyn Watkin and Kim Gabites, Bill Jamieson read from selected works. *Art Lounge – free* Saturday 27 September 1pm to 4pm

## Art Walks

Join us for a walk that combines art and music – see how three artists have turned a violin into a work of art in a fundraising event organised by The Guild of the Auckland Philharmonic.

*Meet outside the New Gallery Friends of the Gallery – no charge. Non-members \$10.* Saturday 27 September 11am <sup>F</sup>



## Friends of the Gallery Lecture Series

Renaissance Art with Mary Kisler (left) Mackelvie curator, International Art, Auckland Art Gallery, Mary Kisler continues her stunning series of illustrated lectures on the art of the renaissance.

The Friends lecture series is held at Central City Library Lorne Street - second floor Friends of the Gallery \$15 Student members \$10 Non Members \$20

\$4 discount parking at Victoria Street car park after 6pm. Park then pick-up your discount voucher from the library.

## Special events

Chris Brickell reads from his book *Mates & Lovers: A History of Gay New Zealand*. The acclaimed GALS (Gay and Lesbian Singers) will perform also. Art Lounge – free Sunday 3 August 3pm

Sit down with author Alexa Johnston and discuss her latest book *Ladies, A Plate: Traditional home baking* (right) at this special lunch. Art Lounge – Friends of the Gallery \$30. Non-members \$35 bookings essential Thursday 2 October noon

Go behind the scenes at the Auckland Art Gallery and discover what registrars do with senior registrar David Reeves. Art Lounge – Friends of the Gallery – no charge. Non-members \$10 Wednesday 15 October 10.30am

More than just a meal – the symbolism of food in classical and Renaissance art Wednesday 6 August 6pm

Stitched stories – the hidden history of Louise de Keroualle's court dress Wednesday 20 August 6pm

Politics, power and the saintly body Wednesday 3 September 6pm

Women artists in the Renaissance Wednesday 17 September 6pm

Join Harvey Bengé as he gives an illustrated talk on how his latest book *A Short History of Photography* came into being. Art Lounge – free Sunday 10 August 1pm

Come to the launch of Alexa Johnston's latest book *Ladies, A Plate: Traditional home baking* (below), enjoy a cup of tea and sample some of Alexa's baking. Art Lounge – free Sunday 7 September 3pm



## Turuki Turuki! Paneke Paneke!

Jim Allen (right), Roger Hardie and Murray Gilbert discuss the work and teaching of the five artists celebrated in the exhibition *Turuki Turuki! Paneke Paneke!* New gallery – exhibition entry charge Sunday 10 August 3pm



Join Indigenous curator, Māori Art, Ngahiraka Mason on a final tour of this landmark exhibition. New gallery – exhibition entry charge Sunday 24 August 3pm

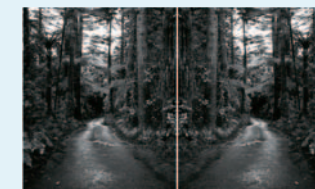
## Earth Matters

Marine scientist and attendee to the International Whaling Commission meetings, Mike Donoghue discusses the future of whales in the South Pacific. New gallery – free Sunday 17 August 1pm

Suzette Jackson from Greenpeace gives an illustrated talk on the use of photography to record Greenpeace activities. Art Lounge – free Sunday 24 August 3pm

Back by popular demand, photographer Ian Macdonald discusses his moving series of works taken of beached whales that occurred at Muriwai during the late 70s. New gallery – free Sunday 31 August 1pm

Ann Shelton, an artist working primarily with photography, will discuss her image *Sleeper* (right) and the series *a kind of sleep* produced in Taranaki during her time with the Govett-Brewster Art Gallery, artist in residency programme. New gallery – free Sunday 28 September 1pm



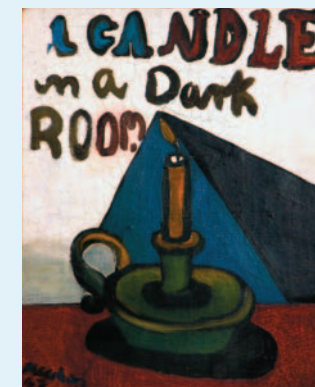
## In Shifting Light

Senior curator, New Zealand and Pacific Art, Ron Brownson, conducts a tour of his new exhibition *In Shifting Light*. New gallery – free Sunday 12 October 1pm

Artist, lecturer, Gavin Hipkins discusses his artworks *Empire (Beach)*, *Empire (Bush)* and *Te Wairoa (Falls)* in the exhibition. New gallery – free Sunday 19 October 3pm

Enjoy a glass of wine and private tour of the newly opened exhibition *In Shifting Light* with senior curator, New Zealand and Pacific Art, Ron Brownson. New Gallery – Friends of the Gallery \$5, non-members \$10 (includes exhibition entry fee) Tuesday 21 October 6pm

William McCahon discusses his father's paintings *A Candle in a Dark Room* (right) 1947, *Takaka: Night and Day* 1948 and *Urewera Triptych* 1975 and the biographical history that is contained within them. New gallery – free Sunday 26 October 3pm



# Kids Club

Sign up for our fortnightly Kids Club e-newsletter at [www.aucklandartgallery.govt.nz](http://www.aucklandartgallery.govt.nz)

## Sundays with Kids Club

If you are looking for something to keep the kids occupied during the colder months, why not book them into the gallery's Kids Club? Every Sunday at 11am and 2pm, Prue Cunningham, our special tutor for childrens programmes conducts a one-hour session of fun, practical art-making inspired by works on exhibition. Kids Club is designed for children aged five to 10 years and costs \$6 a child per session.

## Holiday Programme

Relax in our café or gallery shop while your child takes part in a two-hour workshop from 10am. There are different programmes based on the truly amazing works by the artists nominated for the 2008 Walters Prize, each week.

### Week one:

Tuesday 1 Sep, Wednesday 1 and Thursday 2 Oct

### Week two:

Tuesday 7, Wednesday 8 and Thursday 9 Oct

One programme will be for five to 10 year olds and the other for seven to 12 year olds and costs \$10 a child per session including all materials and morning tea.

Bookings are essential for both Kids Club and the holiday programme. Phone 307 4540 or email [kidsclub@aucklandartgallery.govt.nz](mailto:kidsclub@aucklandartgallery.govt.nz)

Below left: Kids learn more about the art works in *Earth Matters*  
Below right: Getting creative at Kids Club, earlier this year



# Image Credits

Page 3 Turuki Turuki! Paneke Paneke! Selwyn Wilson Study of a head 1948, oil on board, Auckland Art Gallery Toi o Tāmaki

Page 4 & 5 The Walters Prize 2008 John Reynolds Cloud 2006, Photograph by Patrick Reynolds, Collection of Te Papa Tongarewa Museum of New Zealand

Ethi Amituanai House of Manu 2007, Courtesy of the artist and Anna Miles Gallery

Peter Robinson, Installation view of ACK 2006, Image courtesy of the artist and ARTSPACE, Photograph by Alex North

Lisa Reihana Maui 2007 from Digital Marae Courtesy of the artist

### Page 6 In Shifting Light

Colin McCahon Takaka: Night and Day 1948, oil on canvas, Auckland Art Gallery Toi o Tāmaki, gift of the Rutland Group, 1958

### Page 7

Pat Hanly's New Order 29 part II, 1963, oil on canvas, Auckland Art Gallery Toi o Tāmaki

### Pg 8,9, 10 & 11

Ann Shelton Sleeper 2004, photograph, courtesy of the artist

Colin McCahon A Candle in a Dark Room 1947 foil on board, Auckland Art Gallery Toi o Tāmaki, on loan from a Private Collection

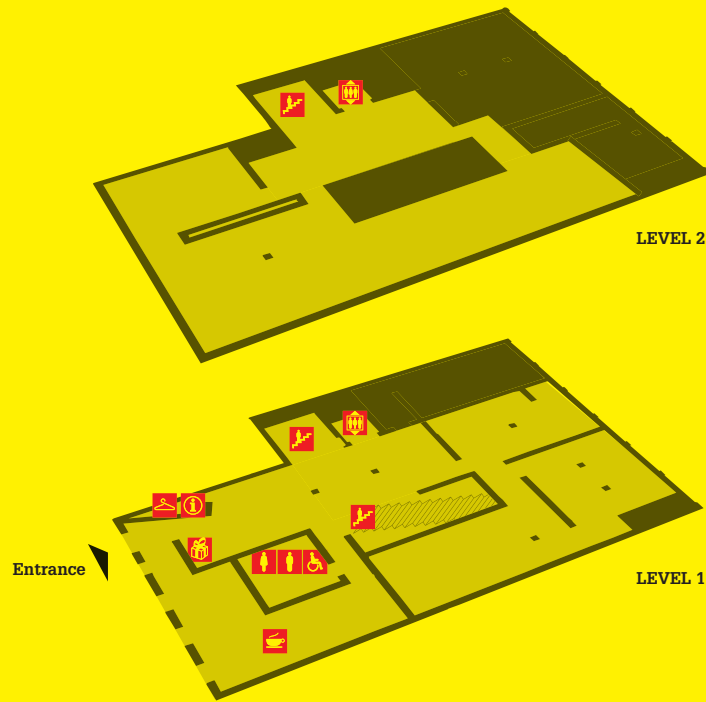
Below: Gavin Hipkins Empire [Beach] 2007 c-type print, Auckland Art Gallery Toi o Tāmaki Gift of the Patrons of the Gallery, 2007





# Gallery Floor Plans

## New Gallery

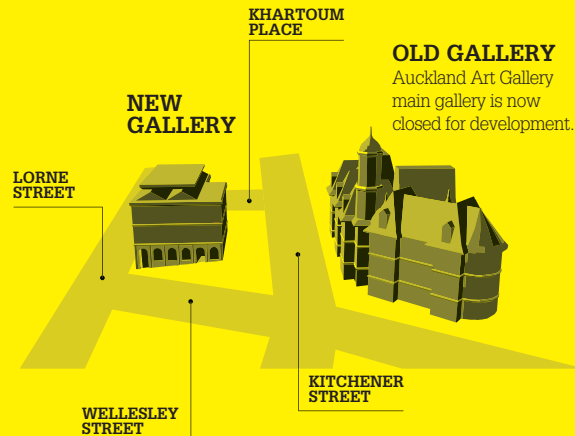


- FEMALE
- MALE
- DISABLED TOILET
- BABY CHANGE
- INFORMATION
- COAT CHECK
- SHOP
- LIFTS
- ESCALATOR
- CAFE

**guide** Our guides are located throughout the gallery. They are qualified and trained to assist with any questions you may have. Please feel free to ask our guides any questions.

**Lighting:** The lighting levels are low for the protection of the works of art

- NO PHOTOGRAPHY
- NO SMOKING
- NO FOOD
- NO TOUCHING



# GEON

bringing vision to life



Your brand is a work of art, which is why GEON was created as a visual communications company perfectly positioned to guard the safety and quality of your masterpiece.

From the moment you are inspired, to the point your vision is finally realised, our company is there to protect you every step of the way.

When you have a vision for your brand, let GEON help you bring it to life.

