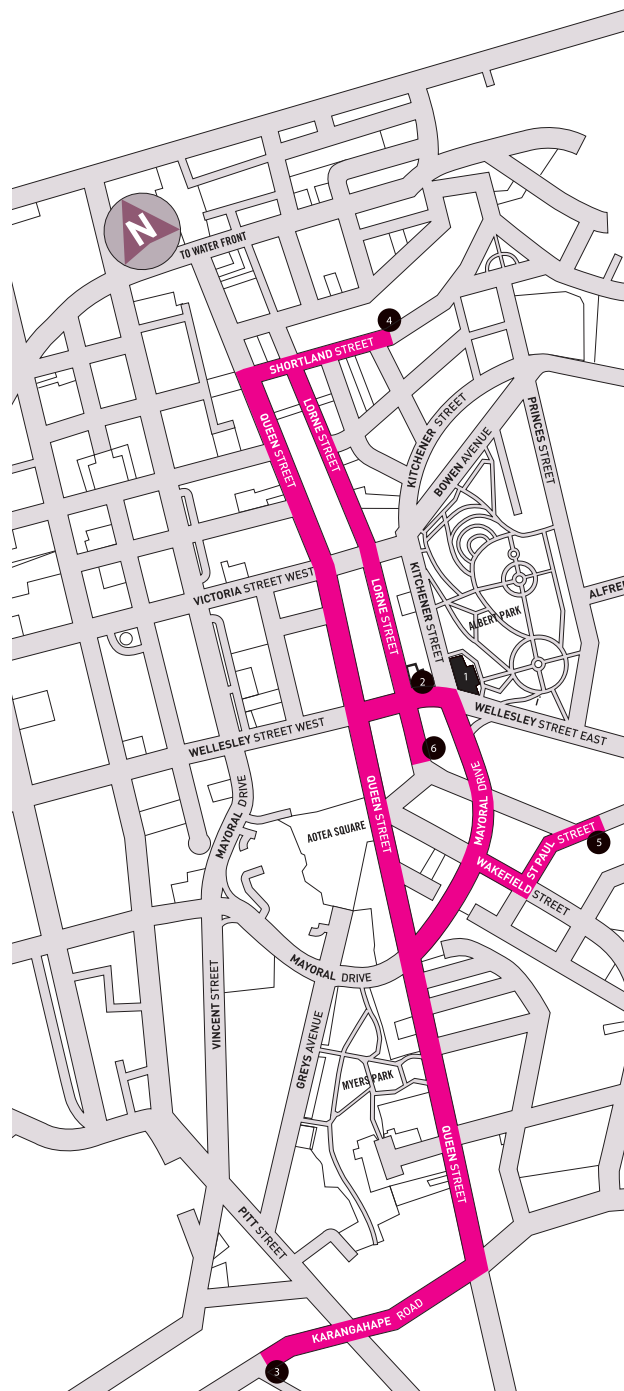


On Show

EXHIBITIONS & EVENTS

AT AUCKLAND ART GALLERY TOI O TĀMAKI

FEBRUARY / MARCH / APRIL 2007 // **FREE** // www.aucklandartgallery.govt.nz



Auckland Art Gallery Toi o Tāmaki

1 Main gallery

Cnr Wellesley and Kitchener Sts

PO Box 5449, Wellesley St

Open daily 10am to 5pm
except Christmas Day and Easter
Friday. Free guided tours 2pm daily.
Free entry to the gallery. Admission
charges apply for special
exhibitions

Ph 09 307 7700 Infoline 09 379 1349

www.aucklandartgallery.govt.nz

3rd Auckland Triennial

Venues:

2 New Gallery

Cnr Wellesley and Lorne Sts

3 ARTSPACE

Level 1, 300 Karangahape Rd

4 The Gus Fisher Gallery

74 Shortland St

5 ST PAUL ST

Level 1, WM Building, 34 St Paul St

6 Academy Cinemas

Central Library building, 44 Lorne St

Getting there:

By foot – all venues are within
walking distance of each other

By bus – Link buses pass near each
venue every 10-15 minutes.

Bus, ferry and train info:

www.maxx.co.nz or ph 09 366 6400

By car – \$4 all day parking on
weekends and public holidays at
Victoria St carpark, cnr Victoria &
Kitchener Sts. Park then collect a
discount voucher from Auckland
Art Gallery or Academy Cinemas.

ARTG-0009-serial



On Show
Edited by Jennifer Dann
Designed by Inhouse
Printed by Spectrum Print
ISSN 1177-4614

Auckland Art Gallery Toi o Tāmaki relies on the good will and generosity of corporate partners. We are delighted to acknowledge their ongoing support.

 **ERNST & YOUNG**

 **Simpson Grierson**

Deutsche Bank 

SAATCHI & SAATCHI

AUT

CITYLIFE
AUCKLAND
A SPENTAGE HOTEL

MONTANA
NEW ZEALAND

BECK'S

aa to
COLOUR

Cover image:
Lida Abdul *War Games (What I Saw)*
(still) 2006, 16mm film transferred
to DVD, courtesy of the artist and
Giorgio Persano Gallery, Turin

From the Director



Chris Saines, Director,
Auckland Art Gallery
Toi o Tāmaki

Welcome to the first On Show of 2007, a year that will see us finally reach our much heralded goal to undertake a major development of the gallery. I say 'finally' all too knowingly, because that goal has continued to elude us over the last twelve months. As most readers will know, our main building closing date has been put back on several occasions – first in July, then in December – and we have had to develop new programmes at relatively short notice each time.

As we go to print, that date remains unconfirmed due to resource consent appeals, which I am hopeful we can resolve in the next few months. Meanwhile, this issue celebrates a great end of summer and early New Year programme that points the way ahead to the expanded and exciting

future our new building will create, from the complex and sprawling collection-based *Passion and Politics*, though to the largest ever Triennial of contemporary art from New Zealand and the world.

The *3rd Auckland Triennial* reaches across five city venues – including the New Gallery, The Gus Fisher Gallery, Artspace, St Paul St and Academy Cinemas – and features nearly 40 artists from some 20 countries. They are drawn from across the globe, from places such as Afghanistan, Uzbekistan, Lebanon, Cuba and Palestine and include many major artists who are all but unknown to New Zealand audiences. Curated by Victoria Lynn around the theme of 'turbulence', it will be the must see show of 2007.

— Chris Saines

Welcome to Auckland Art Gallery

It's your gallery. It's free and it's in the heart of Auckland City

EXPLORE Our collection is the largest in the country with 14,000 art works spanning seven centuries. You don't need to be an art expert to enjoy some of New Zealand's most well-loved works. Friendly gallery guides are on hand to answer your questions and free guided tours are held daily at 2pm.

RELAX Catch up with friends over lunch or a coffee at our leafy balcony cafés overlooking Albert Park and Khartoum Place.

ENJOY Pop into our gallery shop for unique gift ideas and gallery publications.

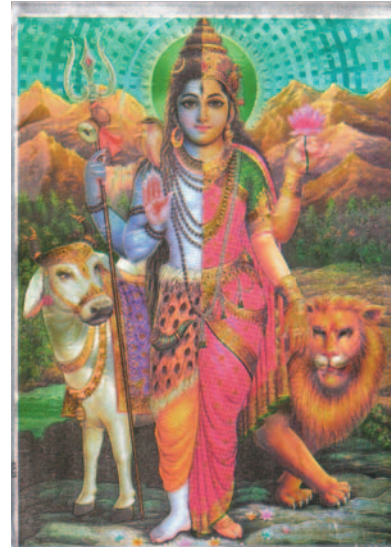
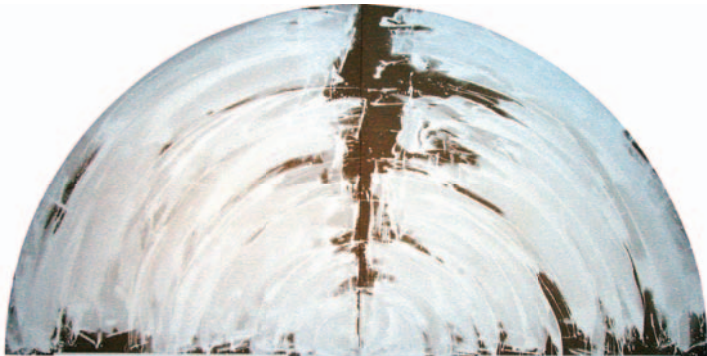
AMUSE Children are welcome and there's plenty to keep small hands busy in our Sunday Kids Club and holiday art programmes.

DISCOVER Like to know more about art? We hold a mix of interesting events throughout the year. Come along and learn something new.

Admission charges apply for special exhibitions.



News



Far left: Gretchen Albrecht *Aotearoa – Cloud* 2002 acrylic and oil on canvas, Auckland Art Gallery, gift of the gallery patrons.

Centre: Alexandros Georgiou, from the series *Without my own vehicle* 2006, courtesy of the artist and Eleni Koroneou Gallery, Athens

Below: Michael Parekowhai *The Story of a New Zealand River* 2001, paua, capiz, laquer and wood on a concert grand piano. Auckland Art Gallery. On loan from the Thanksgiving Foundation

ARCHIVE_GIFTED / FILM_FOR_SALE / ART_FOR_KIDS / MAJOR_PARTNER / ARTIST_TRAVELS / LOAN_TO_OZ / ARCHIVE_GIFTED / FILM_FOR_SALE / ART_FOR_KIDS / MAJOR_PARTNER / ARTIST_TRAVELS / LOAN_TO_OZ / ARCHIVE_GIFTED / FILM_FOR_SALE / ART_FOR_KIDS / MAJOR_PARTNER / ARTIST_TRAVELS / LOAN_TO_OZ /

ARCHIVE GIFTED

Audio recordings of talks given in the 1980s by artists including Tony Fomison, Don Binney, Sylvia Siddell and Greer Twiss have been gifted to the gallery's E H McCormick Research Library. The talks and accompanying slides were donated by Claudia Pond Eyley and Murray Gilbert (above) on behalf of the NZ Society of Sculptors, Painters and Associates. The library is open Tues and Wed 10.30am to 4pm.

FILM FOR SALE

Artist Gretchen Albrecht is helping the gallery raise money for its planned development. Proceeds from the DVD *Aotearoa – Cloud*, on sale in the gallery shop, will go towards the \$90 million project. The \$20 DVD features an interview with Albrecht on the making of her huge painting *Aotearoa – Cloud*, currently on show in the exhibition *Hei Konei Mai*.

ART FOR KIDS

School students create art inspired by work in the gallery. Up to 400 children a week attend the gallery's education programme, involving a tour of the gallery followed by a one hour practical lesson. Subsidised buses can be arranged. For bookings phone our education team. Ph 307 6345.

MAJOR PARTNER

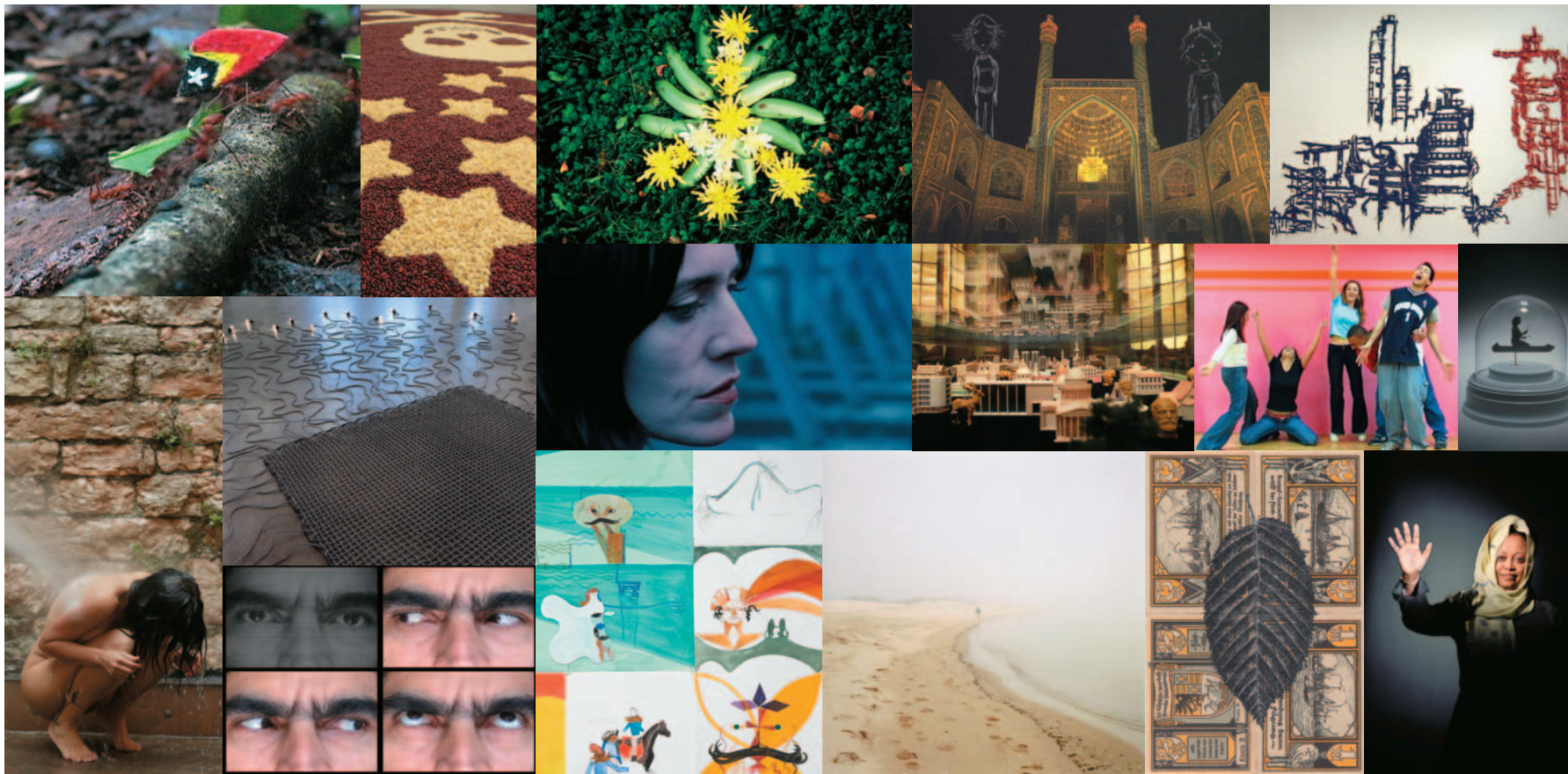
AUT University has signed a major partnership deal to support the next three Auckland Triennials to 2013. Mayor Dick Hubbard says the commitment will help grow the event, enhancing Auckland's international profile. Vice-chancellor Derek McCormack (top) says AUT is committed to supporting Auckland's creative sector. AUT's St Paul St gallery is a partner venue for the exhibition.

ARTIST TRAVELS

Greek artist Alexandros Georgiou was the first artist to leave for *turbulence: the 3rd Auckland Triennial*, travelling from India's holy city of Varanasi entirely by public transport. He left in November and hopes to arrive in Auckland for the 9 March opening! Along the way, he's creating works which respond to his environment and posting them to Artspace.

LOAN TO OZ

A grand piano by artist Michael Parekowhai had an epic journey to Queensland where it is one of four works from Auckland Art Gallery on show in the fifth Asia-Pacific Triennial. Piano movers helped pack *The Story of a New Zealand River* into a special crate flown by freight to Melbourne then taken on a 22-hour truck trip to Brisbane.



turbulence
the 3rd Auckland Triennial

This multi-venue exhibition presents contemporary art from around the world that addresses the condition of *turbulence* – the complex and unpredictable times in which we live.

Over 35 artists from more than 20 countries engage with the emotional flux of their daily reality, responding to the ambient hopes and

fears in our midst. They have created aesthetic interventions – active, vital and alternative ways of looking at the world around us.

Their works include stories of ancestry and exile; journeys through literal and imagined spaces; reflections upon the fragility of existence; and humanity's capacity for resistance and resilience.

Significant works by major artists like Turner Prize finalists Mona Hatoum (Palestine/UK), Isaac Julien (UK), Phil Collins (UK) and Willie Doherty (Northern Ireland) as well as Michal Rovner (Israel/USA), Fiona Hall (Australia), the Long March Project (People's Republic of China) and Carlos Capelán (Uruguay/ Sweden) will be seen for the first time in this country.

New works have been created by nine New Zealand artists, including Shane Cotton, John Pule and Yuk King Tan.

Curated by renowned Australian curator Victoria Lynn, the exhibition features painting, sculpture, photography, video, installation, film, performance and international collaborative actions.

Proud to be part of the Auckland Festival, AK07, *turbulence* is presented across five inner city venues: the New Gallery, Artspace, The Gus Fisher Gallery, St Paul St and Academy Cinemas.

New Zealand's premier
international contemporary
art exhibition provides a

window onto the world of contemporary art, creating a dialogue between the local and the global.

exhibition +
films +
symposium +
catalogue +
performances +
events

www.aucklandtriennial.com

TURBULENCE:
the 3rd Auckland Triennial

9 MARCH TO 4 JUNE 2007

NEW GALLERY

Adult \$7. Concession \$5.
Friends of the Festival \$5.
Friends of the Gallery \$4.
Family pass \$18

Auckland Triennial Partner

AUT
UNIVERSITY

Principal sponsor

 Simpson Grierson

Major Supporters

SUE FISHER
ART TRUST

AUCKLAND FESTIVAL 

**PATRONS OF
THE TRIENNIAL**

Exhibition Partners

ARTSPACETM

THE GUS FISHER
GALLERY

◀ST PAUL ST

**ACADEMY
CINEMAS**

Support Sponsors

 creative
nz



Australian Government

 **BRITISH COUNCIL**
New Zealand



BRITISH AIRWAYS

CITYLIFE
AUCKLAND
A HERITAGE HOTEL



Passion & Politics

Two Centuries of British Art

Drama, folly and satire from the era known as “the golden age of British painting” feature in this free show of more than 140 works by stars like Thomas Gainsborough, William Hogarth, Sir Joshua Reynolds and John Waterhouse. The new British School of Art which emerged in the Age of Enlightenment turned an often witty lens on everyday life. For the first time, artists created works that spoke of the rich variety of their own time. Ordinary

people became a legitimate subject for art while satirists lampooned kings, courtiers and country folk in equal measure. Views of the English landscape and rural pursuits were just as popular as portraits of public figures. Children could be seen at play, rather than the ‘miniature adults’ of previous centuries. Even horses could be stars – Phar Lap being among the direct descendants of *Eclipse* (below). In Walter Sadler’s *Married* (right), the body

language, blocked garden entrance and tortoise lumbering off to hibernate all suggest first love has waned. *Pope makes love to Lady Mary Wortley Montagu* (inside cover) depicts the moment poet Alexander Pope declared ardent love for his fellow writer. She burst into a fit of laughter from which his pride never recovered. These works from the gallery’s collection remain a rich and satisfying record of the age.



Above: John Sartorius *Captain O'Kelly's Eclipse* 1780, oil on canvas, Auckland Art Gallery, gift of Moss Davis

PASSION AND POLITICS:

Two Centuries of British Art

NOW SHOWING

MAIN GALLERY,
LEVEL ONE

Free Admission



Above: Walter Sadler *Married* oil on canvas, Mackelvie Trust Collection, Auckland Art Gallery

Towards Auckland:

Colin McCahon the Gallery Years

This exhibition considers McCahon's artistic contributions during the decade he worked at the gallery from 1953. His trip to the United States in 1958 triggered a radical shift in style. The significance of his encounter there with Piet Mondrian's geometric paintings is visible in this homage (right) to the Dutch artist. McCahon wrote that Mondrian's paintings "had an openness and scale that extended beyond the edges of the paintings". The work, created soon after the family's shift from leafy Titirangi to central Auckland,

reflects McCahon's new urban landscape. He spoke of a problem he shared with Mondrian: "How to make painting beat like, and with, a human heart", concluding the answer was to be found by engaging with the human condition. The exhibition's centrepiece, *The Second Gate Series* 1962, considers the threat of nuclear holocaust and "a way through" for humanity.

Colin McCahon *Here I give thanks to Mondrian* 1961, enamel on board, Auckland Art Gallery, gift of the gallery Friends, courtesy of the Colin McCahon Research and Publication Trust



TOWARDS AUCKLAND:
Colin McCahon the Gallery Years
ON SHOW UNTIL 25 MARCH
MAIN GALLERY,
GROUND FLOOR 3
Free Admission

Love Chief

Love Chief explores the idea of personality in contemporary art

Personality is the mechanism by which we understand somebody's character, their make-up and behaviour. When it comes to art, personality can also be described as an object's behaviour.

This exhibition explores how personas are used to exaggerate a sense of

behaviour and personality or character.

Love Chief integrates the persuasive language of Ed Ruscha's painting (right), which conveys a powerful persona – sexy, star-struck, Hollywood. The work has all the character of Ruscha's hometown LA and all the punch of a superstar.

Ed Ruscha *Love Chief* 1986 acrylic on canvas, Auckland Art Gallery



LOVE CHIEF
FROM 31 MARCH
MAIN GALLERY,
GROUND FLOOR 3
Free Admission

Hei Konei Mai:

We'll Meet Again

Our stories, people and places are the focus of this final collection exhibition. The gallery's much anticipated restoration provides the occasion to say hei konei mai – goodbye for now – to some of New Zealand's most famous and cherished art works until we meet again in 2010.

The gallery's unrivalled collection of Goldie and Lindauer portraits feature alongside colonial New Zealand landscapes, photography and prints while recent icons and visual touchstones expand on and create new art histories.

Many visitors feel a strong emotional response to these treasured works from past to present. The gallery is keen to hear your thoughts on your favourites.

Come and write your own label for a work of your choice. Or go to our website www.aucklandartgallery.co.nz. Your label may be chosen for display alongside the work.

This show is free. Don't miss your chance to say "hei konei mai".

HEI KONEI MAI:
We'll meet again

NOW SHOWING

MAIN GALLERY,
GROUND FLOOR 1 2

Free Admission



Filipe Tohi Veimaka – *Water Stone*
2003, andesite, Auckland Art Gallery

Framing the past:

Five centuries of European painting

We have our own Da Vinci code on display at the gallery! Marco d'Oggiono was staying in Leonardo's house in Milan when he painted this *Madonna and Child* (right) in 1490, and copied details from one of Da Vinci's portraits. While this artist never demonstrated the same genius as his friend, he was in many ways a better technician.

Right: Marco d'Oggiono
Madonna and Child c1490

The child's gesture to his mother's breast indicates both literal nurturing as well as the spiritual sustenance given by Mother Church to the faithful.

Framing the past celebrates European art from the 13th to 17th Century, in a series of conversations between periods, styles and genres that include religious paintings, landscape, portraits and scenes of everyday life.



FRAMING THE PAST:

Five centuries of European painting

NOW SHOWING

MAIN GALLERY, GROUND FLOOR **6**

Free Admission

A Lighter Touch

Hailed as the greatest British sculptor of the 20th century, Henry Moore's human figures were inspired by the organic shapes of the British landscape. Moore was torn between traditional art and more ancient, elemental images. This family trio (right) derives from both the Renaissance trinity of St Anne, Virgin and Child and the ancient Greek trinity of Demeter, Persephone and Triptolemus. As a preliminary model, it provides an

insight into the artist's creative process and also bears his direct mark, which could be lost in larger works produced with the help of assistants. *A Lighter Touch* explores the fresh approach to everyday subject matter first introduced by the Impressionists. Don't miss this free show of 19th and 20th century works by European greats, including Edgar Degas, Pablo Picasso, Paul Nash and Henri Matisse.



A LIGHTER TOUCH

NOW SHOWING

MAIN GALLERY, GROUND FLOOR **4 5**

Free Admission

Right: Henry Moore *Study for a Family Group* 1945, bronze, Auckland Art Gallery. Reproduced courtesy of the Henry Moore Foundation.



Shane Cotton *Free Fall* 2006

Acquisitions

Shane Cotton is a significant presence in New Zealand art. His works are held in every major public collection in Australasia. The Nga Puhī artist says the central theme of *Free Fall*, recently purchased by the Chartwell Collection, is dis/connection. The painting takes its structural lead from traditional Maori carvings on pare (the

horizontal panels above doors and windows) where tiki (people) are flanked by manaia (birds), alluding to the connection between the terrestrial and celestial (physical/spiritual). In *Free Fall*, the central head is flanked by a falling bird and bull's eye (or bird's eye). The painting then becomes a juxtaposition of opposites:

flat shapes as counterpoints to three-dimensional images (plane vs bird), images in motion painted as static, sky beneath land. By playing with traditional ideas in new ways and using contemporary forms like the DVD play/pause symbols, Cotton addresses ideas of loss, melancholy, separation, uncertainty, paradox and shift.

Above: Shane Cotton *Free Fall*
2006 Chartwell Collection,
Auckland Art Gallery
Right: Detail

Now showing in
HEI KONEI MAI:
WE'LL MEET AGAIN

MAIN GALLERY, GROUND FLOOR **2**

Free Admission



turbulence

the 3rd Auckland Triennial

Here's a sample of the wide array of events in the 3rd Auckland Triennial. For up-to-date listings visit our website www.aucklandtriennial.com

Talks

Public talks will be held throughout this exhibition by many of the artists including (clockwise) Alexandros Georgiou, John Pule, Lynette Wallworth, Isaac Julien and Julie Rrap. For details go to www.aucklandtriennial.com



turbulence curator **Victoria Lynn** (left) discusses the exhibition's concept. *New Gallery exhibition entry applies Mon 12 March 2pm*



Costa Rican artist **Lucia Madriz** discusses her work *Red Alert* (above) made of beans, rice and corn. "There are still pirates, they just come in a different guise these days," she says. *Main gallery auditorium Thurs 22 Feb 6pm*



Political refugee **Ahmed Zaoui** (left) and his lawyer Deborah Manning discuss the exhibition's theme. *New Gallery exhibition entry applies Sun 18 March 1pm*

Sign up for our e-newsletter. For fortnightly emails on exhibitions and events go to www.aucklandartgallery.co.nz, click on e-newsletter and fill out the form.

Performance/actions



Don't miss **The Atlas Group/Walid Raad** (above) who combine live performance with video, blurring the line between truth and fiction to expose the absurdity of terror and information networks in Lebanon. *Free. Bookings essential. Ph 307 4540. Mon 12 March*



Lantern Festival

Check out the *No Chinatown* stall, part of a collaborative action between Chinese artists the **Long March Project** with Auckland artists **Daniel Malone** and **Kah Bee Chow**. *Albert Park and Kitchener St The main gallery is open late each night until 10pm Fri 2 to Sun 4 March*



Auckland artist **Eve Armstrong** sets up her *Trading Table* (left) on the street and encourages people to trade an object, idea or service for something on the table. *Downtown Auckland. Fri 9 March, 30 March, 20 April and 11 May, 11.30am – 3pm*

Symposium

The highlight of the opening weekend symposium is a keynote lecture from Cuban curator and writer **Gerardo Mosquera** (below right). The co-curator of last year's Liverpool Biennial and adjunct curator at New York's New Museum of Contemporary Art will discuss international viewpoints on art and culture. *Main Gallery. Tickets \$10 adult, \$8 concession. Bookings essential Ph 307 4540. Fri 9 March 6pm*

The rest of the opening weekend symposium is free. In a series of panel discussions, academics and artists from New Zealand and overseas will consider the impacts of diaspora, migration and exile and their expression in contemporary art and culture. Speakers include Professor Ien Ang, director of the University of Western Sydney's Institute for Cultural Research and Dr David Craig from Auckland University's sociology

department. Nikos Papastergiadis, deputy director of Melbourne University's Australian Centre, will chair a session. *Main gallery auditorium Bookings not required. Sat 10 to Sun 11 March 1pm–3.30pm*



There are a wide array of events at the gallery each week.
For up-to-date listings visit our website www.aucklandartgallery.co.nz

Film

A screening of Andrew McAlpine's classic 1970 Kiwi surf documentary *Children of the Sun* (right) featuring breaks at Piha, Marsden Pt, Gisbourne and Kaikoura.

Main gallery auditorium – free
Sat 3 Feb 1pm – 50 minutes



The New Zealand Film Archive presents *Sculptors at Work* (left). Alexander Fraser, Fred Graham, Len Lye, Para Machitt, Greer Twiss and Arnold Wilson talk about their practice.

Main gallery auditorium – free
Sun 4 Feb 3pm – 50 minutes

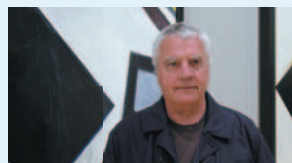


Talks

Australian-born public programmes curator [Kim O'Loughlin](#) discusses the aboriginal art on show in *Hei Konei Mai*.
Main gallery – free
Sun 4 Feb 1pm

Art historian [Edward Hanfling](#) discusses the Modernist movement and its radical effect on British art in the 1920s and 30s.
Main gallery – free
Sun 18 Feb 1pm

Curator [Mary Kisler](#) discusses the work of William Hogarth, which heralded an era known as "the golden age of British painting". Sign language interpreter available.
Main gallery – free
Sun 18 Feb 3pm



A walk through the Colin McCahon exhibition with curator [Hamish Keith](#) (left) who worked at the gallery with McCahon in the early 1960s.
Main gallery – free
Sun 4 March 3pm



[Professor Wystan Curnow](#) (above) discusses the sacred and the secular aspects of Colin McCahon's paintings.
Main gallery – free
Sun 25 Feb 1pm

Art history lecturer [Dr Don Bassett](#) presents two illustrated talks on 18th and 19th century British architecture in *Passion & Politics*.
Main gallery – free
Part 1 Sun 25 Feb 3pm
Part 2 Sun 4 March 1pm

Senior curator [Ron Brownson](#) talks about the diverse range of art on show from Australia, New Zealand and the Pacific.
Main gallery – free
Sun 1 April 3pm

Music

The internationally acclaimed [Goldenberg Duo](#), Susan and William, perform works for piano and violin by a wide range of composers from Brahms to Gershwin.
Main gallery – free
Mon 9 April 3pm

Friends of the Gallery

President's Letter



Dear Friends,

We were very pleased with the large attendance at our Christmas Party – such a warm friendly atmosphere. It was a pleasure to welcome and chat to guests, new members and old Friends. Plans are well in hand for 2007. I'm sure many of our members will be pleased to see the number of evening and weekend dates on the calendar. The committee has ambitious plans for the future. We intend to continue implementing organisational changes and will be seeking more volunteer support for individual projects. Many thanks to members who've encouraged friends and family to join our society.

Deanna Briant
President

The Friends of the Gallery is a voluntary organisation dedicated to encouraging interest in the visual arts. Members receive a range of benefits and special privileges. They are involved in the life of the gallery and contribute to its success through the purchase of artworks for the permanent collection.

FRIENDS EVENTS

FEB – APRIL 2007

For more details and booking information contact the Friends' secretary on 09 307 7705 or email galleryfriends@aucklandcity.govt.nz

Thursday 8 February
1pm
A lunchtime talk by *Summer Daze* curator Ngahiraka Mason.

Tuesday 20 February
6.15 – 8.30pm
An evening in *Passion and Politics* – *Two Centuries of British Art* with curator Mary Kisler. Drinks and savouries. Members \$20. Student members \$10. Non-members \$25

Tuesday 6 March
6.30 – 8pm
The Friends invite you to *Looks so Fine* at Whitespace Gallery, Ponsonby. Wine and cheese. Sculptor's talk. Members \$10. Student members \$5. Non-members \$12

Wednesday 21 March
9am
Coach trip north to the newly opened Brick Bay Sculpture Trail. The \$50 cost includes lunch and wine tasting in the vineyard as well as the sculpture trail.

Tuesday 27 March
6.15 – 8.30pm
Assistant curator Jane Davidson discusses *turbulence: the 3rd Auckland Triennial*. Drinks and savouries. Members \$20. Student members \$10. Non-members \$25.

Saturday 31 March
3pm
Passion & Politics curator Mary Kisler and conservator Sarah Hillary provide a special presentation on their *Up for Adoption* project. RSVP. Members only. Numbers limited.

Wednesday 11 April
10.30am
Coffee morning. Senior curator Ron Brownson discusses some highlights of *Hei Konei Mai*.

Thursday 19 April
1pm
Curator Natasha Conland talks in the exhibition *Love Chief*.

Saturday 28 April
11am
Art walkabout in Karangahape Road. Members only.



Above: Friends members at the Art Comes Alive event in November

Sunday Kids Club

Art for Children

Kids get creative in the gallery every Sunday at 11am. Our friendly guides help kids aged 5 to 12 years to make their own art inspired by works in our collection. Look out for our *Artist Highlights* when Sunday Kids take part in activities with an artist currently exhibiting at the gallery. Runs for one hour. \$4 per child. Booking is advised. Ph 307-4540.

Summer holiday programme

Relax in our café or bookshop while your child takes part in a two hour workshop from 10am. Kids aged 5 to 12 years create art inspired by works in the gallery. \$6 includes materials, a biscuit and juice. Week One: 11, 12 and 13 April. Week Two: 18, 19 and 20 April. Each daily session is the same. Programme changes weekly. Booking is advised. Ph 307-4540.



Image Credits

Page 4 & 5

Donna Conlon *Coexistence* (still) 2003, DVD, courtesy of the artist

Regina José Galindo *Limpieza Social* (still) 2006 DVD, courtesy of the artist and PrometeoGallery, Milan

Lucia Madriz *Alerta Roja (Red Alert)* [detail] 2006 Installation with beans, corn, rice Courtesy of the artist and Landings 3, Santiago

Mona Hatoum *Undercurrent* (detail) 2004 Electrical cable, light bulbs, Courtesy of the artist and Alexander and Bonin, New York. Photo: Mattias Givell, courtesy Magasin 3 Stockholm Konsthall

Lázaro A. Saavedra González *El Síndrome de la Sospecha (The Syndrome of the Suspicion)* (still) 2004, DVD, courtesy of the artist

Sriwhana Spong *Peace Mantra* (still) 2006, DVD, courtesy of the artist and Anna Miles Gallery, Auckland

Willie Doherty *Closure* (still) 2005, DVD, courtesy of the artist, Alexander and Bonin, New York and Galería Pepe Cobo, Madrid

Julian Hooper, *Liliu* (detail) 2006, various media on paper, courtesy of the artist and Ivan Anthony Gallery, Auckland

Alexandros Georgiou *Imam mosque, Isfahan* 2005, various media on paper from the series Without my own vehicle 2006, courtesy of the artist and Eleni Koroneou Gallery, Athens

Carlos Garaicoa *Postcapital* 2006 installation, wood, metal, polychromed plaster, PVC, cardboard. Produced with the assistance of Institut de Cultura de Barcelona. Courtesy of the artist, Galleria Continua, San Gimignano-Beijing, and Galería Elba Benítez, Madrid

Christina Dimitriadis *Promenade* [detail] 2004, lambda print colour photograph, courtesy of the artist and Eleni Koroneou Gallery, Athens

Yuk King Tan *Boomtown* (detail) 2006 firecrackers, installed in *Local Transit*, Artists Space, New York, 2006, courtesy of the artist and Sue Crockford Gallery, Auckland

Phil Collins *they shoot horses* (still), 2004, video, courtesy of the artist and Tanya Bonakdar Gallery, New York

Areta Wilkinson *Ki Mua Ki Muri* 2005, monel 400, 9ct gold, brass, paint, wood, glass, courtesy of the artist and Anna Bibby Gallery, Auckland. Photo: Studio La Gonda

Fiona Hall *When my boat comes in* [detail] 2002-ongoing, gouache on banknotes, courtesy of the artist and Roslyn Oxley9 Gallery, Sydney

Lynette Wallworth *Evolution of Fearlessness* (still) 2006, single-channel interactive video installation, produced by forma, commissioned by New Crowned Hope Festival, Vienna

Page 10 & 11

Marco d'Oggiono *Madonna and Child* c1490, tempera on panel, Mackelvie Trust Collection, Auckland Art Gallery Toi o Tāmaki, purchased with the assistance of the National Art Collection Fund 1966

Page 12, 13 & 14

Julie Rrap 2000 Portrait courtesy of the artist and Roslyn Oxley9 Gallery, Sydney

John Pule 2004 Portrait by Robert Catto, courtesy of the Arts Foundation of New Zealand

Isaac Julien 2004 Portrait copyright of Jonathan Root

Ahmed Zaoui 2006 Portrait courtesy of NZ Herald

Lucia Madriz *Alerta Roja (Red Alert)* 2006 Installation with beans, corn, rice. Courtesy of the artist and Landings3, Santiago

The Atlas Group/Walid Raad *My Neck Is Thinner Than A Hair* [detail] 2005 Colour photograph, courtesy of Walid Raad

Eve Armstrong *Trading Table* held as part of Roam at ARTSPACE 2005, courtesy of the artist and ARTSPACE. Photo: Conor Clarke

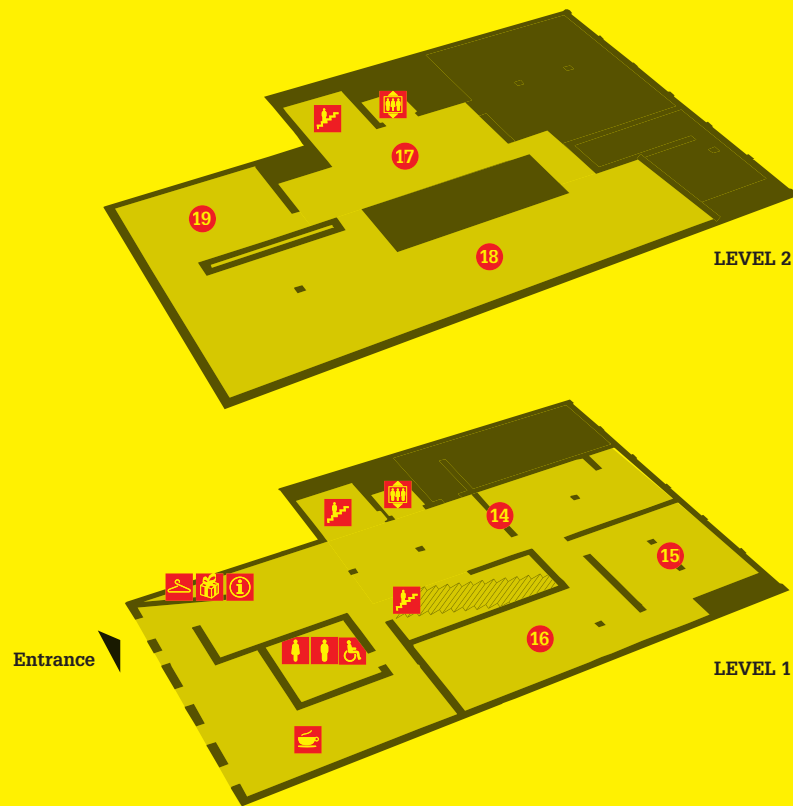
Alexander Fraser still courtesy of the New Zealand Film Archive

Below: William Powell Frith *Pope makes love to Lady Mary Wortley Montagu* 1852, oil on canvas, Auckland Art Gallery, gift of Sir Frank Mappin

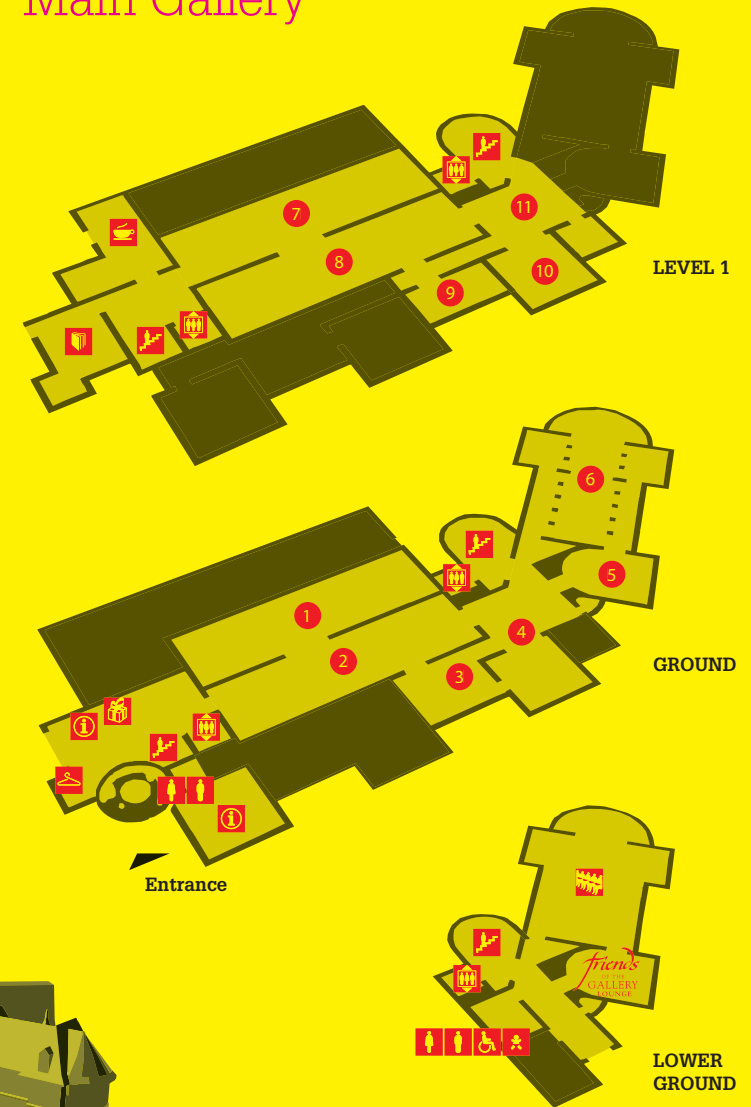


Gallery Floor Plans

New Gallery



Main Gallery



guide Our guides are located throughout the gallery. They are qualified and trained to assist with any questions you may have. Please feel free to ask our guides any questions.

Lighting: The lighting levels are low for the protection of the works of art

