

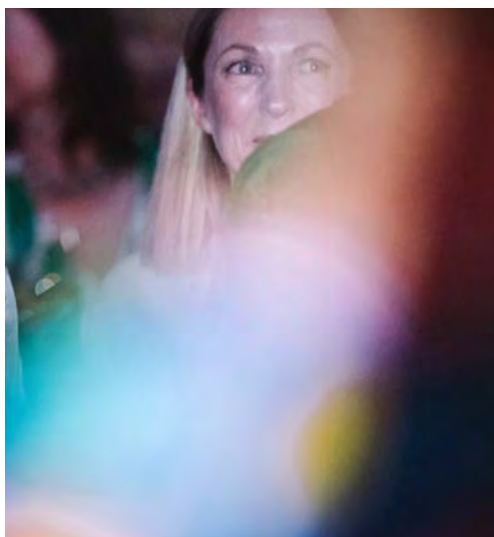
The background image shows the interior of the Auckland Art Gallery Toi Otāma. The space is characterized by a high ceiling with a complex, geometric wooden structure. Several large, colorful, abstract art pieces are suspended from the ceiling by thin wires. The art pieces have a textured, crystalline appearance with vibrant colors like red, blue, green, and yellow. The floor is dark, and the overall lighting is warm and focused on the art. A dark grey rectangular box is overlaid on the right side of the image, containing white text.

# Art After Hours

Hosting Packages at  
Auckland Art Gallery  
2020

AUCKLAND  
ART GALLERY  
TOI OTĀMAKI





# Art After Hours

---

## Hosting Packages

### About Auckland Art Gallery

Auckland Art Gallery Toi o Tāmaki is situated on the edge of Albert Park in a beautiful, award-winning heritage building that blends historical features with vibrant contemporary spaces. The Gallery is home to a permanent collection of 17,000 artworks, including some of New Zealand's most treasured works, and it stages an ever-changing series of exhibitions and public programmes delivered daily, throughout the year.

### Exclusive after-hours hosting

The Gallery also delivers unique art experiences after-hours. We offer hosting opportunities, including private views of an exhibition or collection show, for a range of events, from small, intimate dinners to larger, informal cocktails.

We invite you to contact us about hosting your own special evening, in a visually rich and stimulating environment, which will make a lasting impression on your guests.

Experiences at the Gallery can be tailor-made to meet your needs, but these are some suggested starting points.

---

#### The Collection Experience

– One Gallery

\$5,500 (excl GST)

---

#### The Exhibition Experience

– Two Galleries

\$7,500 (excl GST)

---

#### The Toi o Tāmaki Experience

– Whole Gallery

\$12,500 (excl GST)



## The Collection Experience – One Gallery

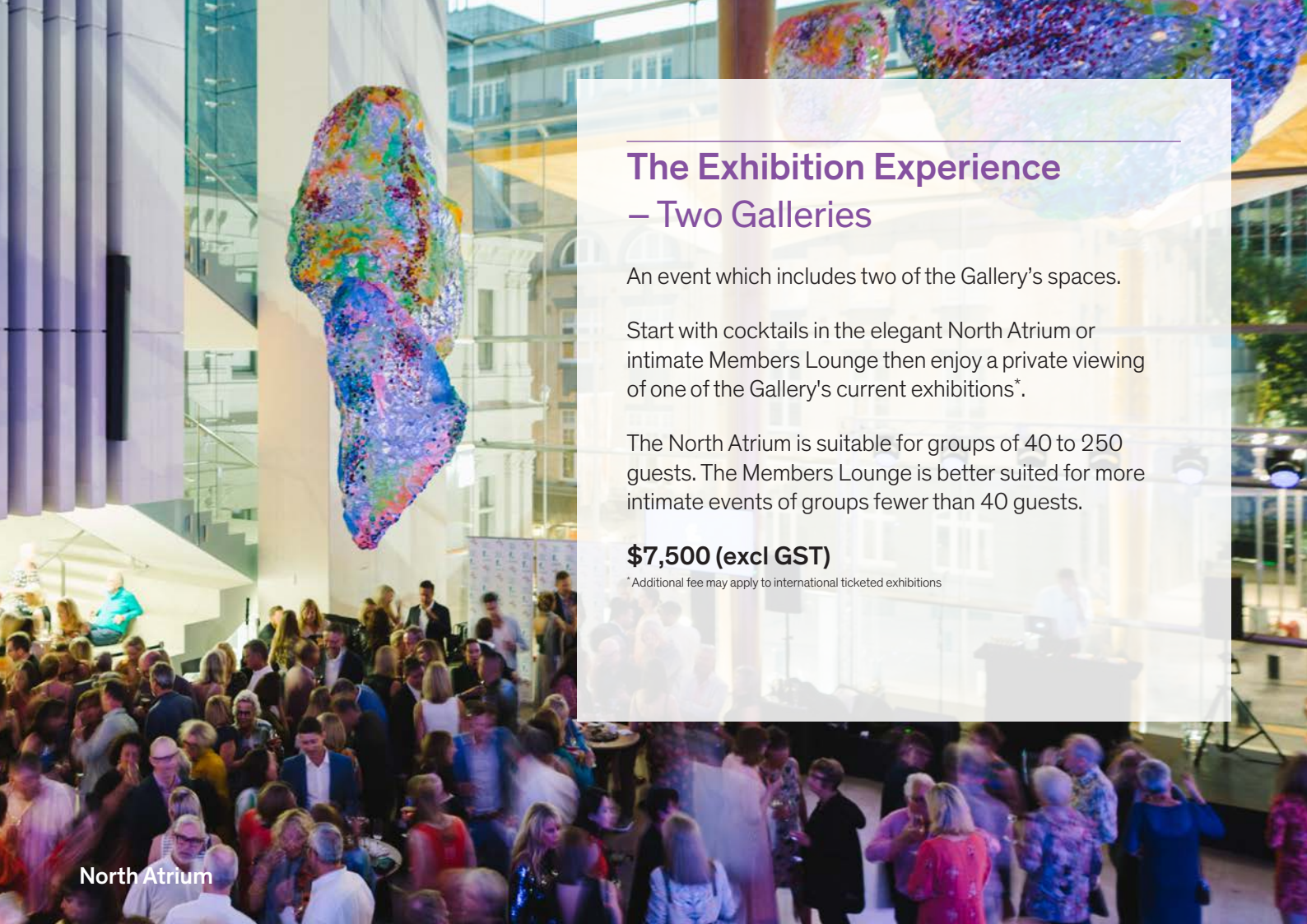
Enjoy an evening in one of the Gallery's permanent collection exhibitions, in either the Mackelvie (40–80 guests) or Lower Grey Gallery (40–140 guests)

This package entitles you to host a private function in one of the Gallery's atmospheric heritage spaces that hold works from the Gallery's permanent collection.

**\$5,500 (excl GST)**







North Atrium

## The Exhibition Experience – Two Galleries

An event which includes two of the Gallery's spaces.

Start with cocktails in the elegant North Atrium or intimate Members Lounge then enjoy a private viewing of one of the Gallery's current exhibitions\*.

The North Atrium is suitable for groups of 40 to 250 guests. The Members Lounge is better suited for more intimate events of groups fewer than 40 guests.

**\$7,500 (excl GST)**

\* Additional fee may apply to international ticketed exhibitions



Curator talk



## The Toi o Tāmaki Experience – Whole Gallery

Make the Gallery your own for the evening. Give your guests the full treatment with access to all the Gallery has to offer, from our permanent collection to our international exhibitions.

Start with cocktails in the elegant North Atrium or intimate Members Lounge, then treat your guests to an after-hours viewing.

This experience includes an introduction from one of Gallery's lead team and a self-guided tour of the Gallery's permanent historical collections (Mackelvie and NZ Art) and one of the current international ticketed exhibitions.

**From 50–250 guests**

**\$12,500 (excl GST)**

External view into North Atrium






---

## Inclusions

Each of the packages includes:

- A four-hour after-hour venue hire (6–10pm)
- Security for the event
- Standard stage set-up and microphone
- Access to up to 8 bar leaners and ottomans

## Not included

- Additional staffing (for larger groups)
- Specialised tech support
- Catering and service

## Catering

A bespoke catering package from one of our approved caterers can be organised at an additional cost, as can additional furniture and technical support.

For further information about these after-hours art experiences please contact Moira Russell, Venue Hire and Events Coordinator:

**M** 027 453 1042  
**DD** 09 890 2281  
**E** [moira.russell@aucklandartgallery.com](mailto:moira.russell@aucklandartgallery.com)

---

## Sponsorship opportunities

In addition to these art experiences, the Gallery welcomes corporate support for a specific exhibition or quarterly late night events that may complement a supporter's business.

Benefits include recognition and branding opportunities, additional networking and behind-the-scenes access accompanied by the Director and/or key Gallery staff.

---

## Contact details

For more information please contact Sue Sinclair, Head of Advancement and Sponsorship:

**M** 027 655 5892  
**DD** 09 890 2216  
**E** [sue.sinclair@aucklandartgallery.com](mailto:sue.sinclair@aucklandartgallery.com)  
[advancement@aucklandartgallery.com](mailto:advancement@aucklandartgallery.com)





North Atrium



Mackelvie Gallery



East Terrace