

Welcome to Yona Lee's *An Arrangement for 5 Rooms!*

What you see are stainless steel tubes that are playfully welded, knotted and constructed by the artist herself!

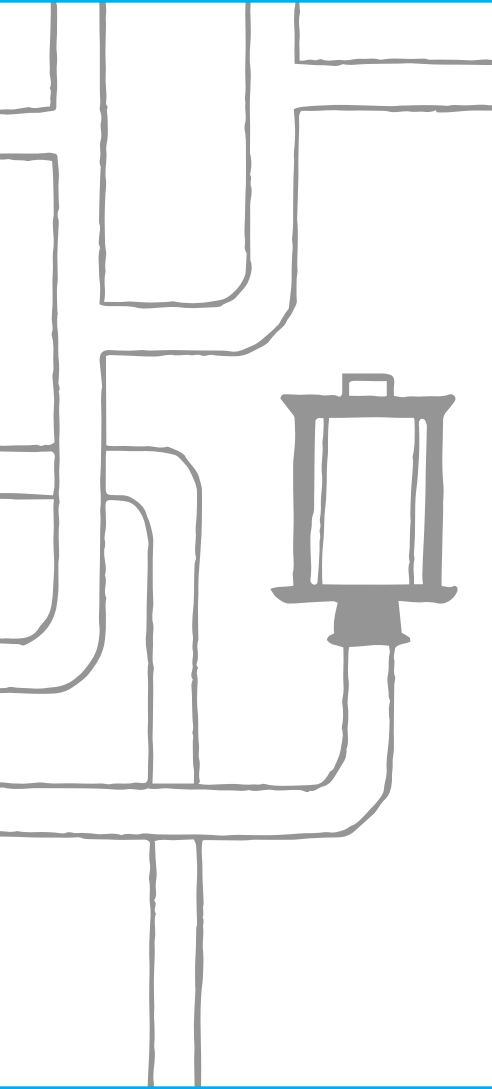
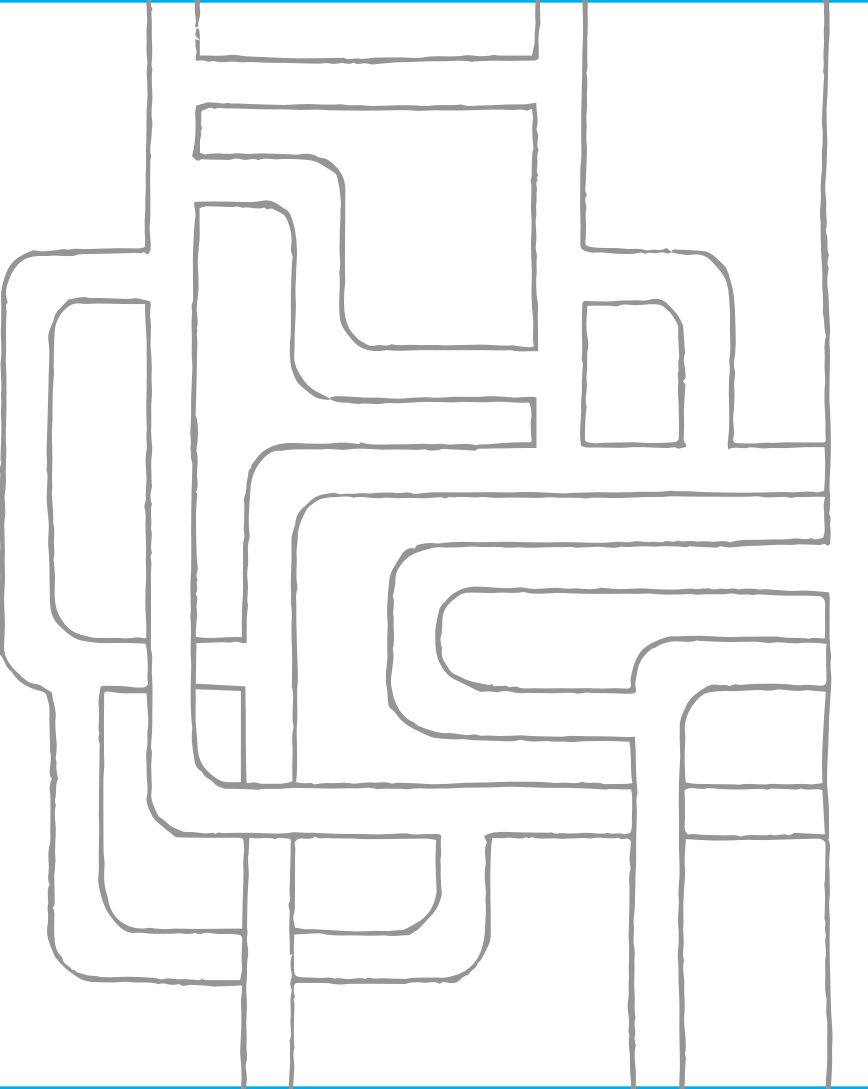
Yona Lee is a New Zealand-Korean artist who is well known for her site-specific installations. She always studies the spaces first when she starts planning an artwork – kind of like setting up a camp or making a hut in the lounge.

She is interested in ideas of how humans interact with domestic and public spaces and objects, and how our relationships to and behaviour in spaces and places are affected by rules, restrictions and expectations.

In this exhibition, you are invited to touch, sit, and interact with the art installation (but no swinging or climbing, please!).

Some rooms may feel familiar and remind you of the places you have been, or some might seem strange and unusual. In some, you may feel like dancing; in others you might feel like lying down ... let your mind and body decide!

Use this booklet as you explore and **interact** with *An Arrangement for 5 Rooms*.



Throughout this self-guide worksheet you will ...

Think to yourself!



Kōrero (talk) with a friend!



Move your body!



The list below provides the meanings of the words that you will see in purple throughout this worksheet.

Abstract artworks or things that do not look realistic and express ideas through shapes, colours, forms and/or textures.

Boundaries something that marks the edge or limit of an area.

Cello a large four-stringed instrument that you play sitting down.

Choreograph inventing a dance.

Constructed built or put together.

Domestic something relating to the home or family.

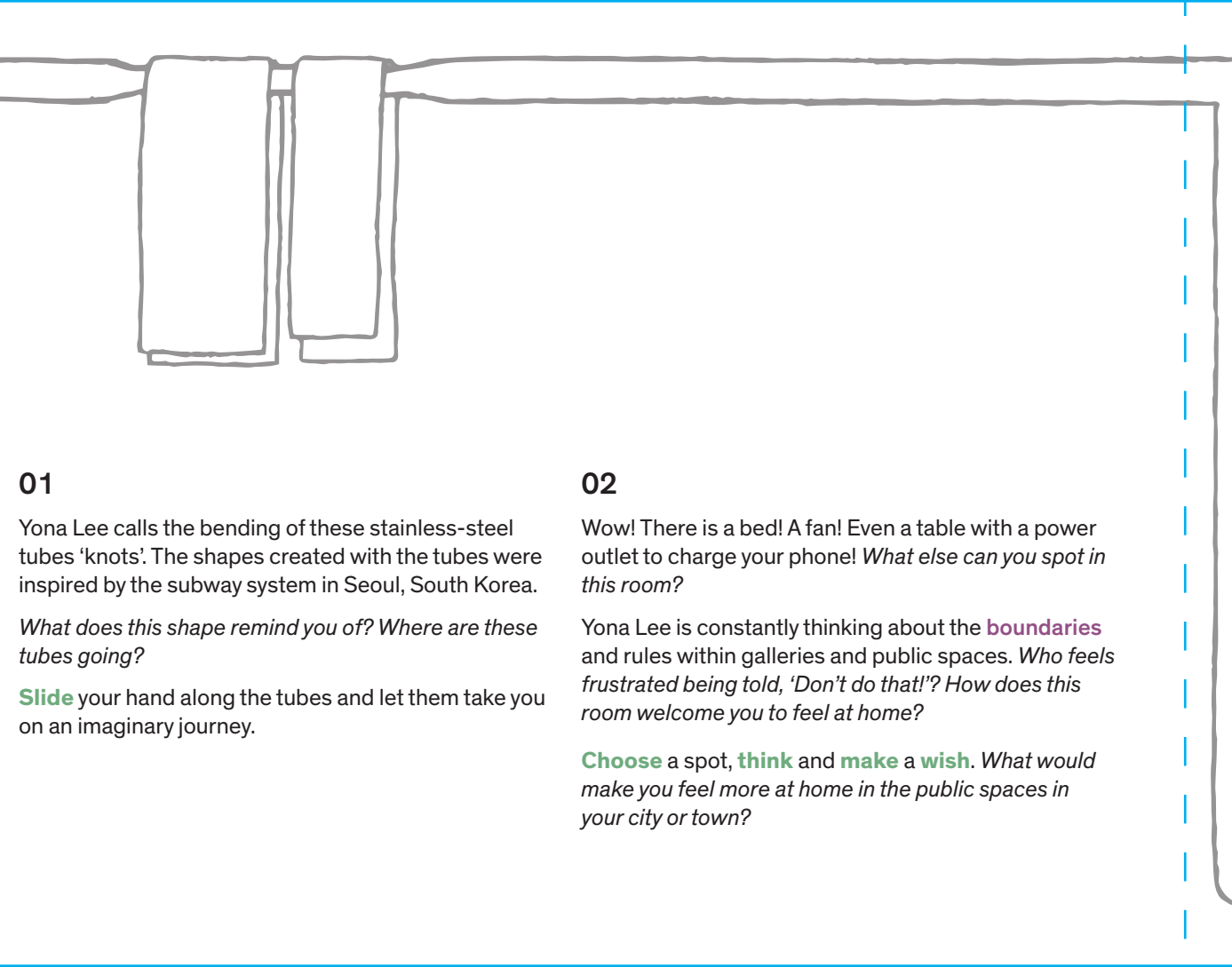
Installations three-dimensional artworks that are designed to transform gallery spaces.

Interact communicate and/or be involved directly with someone or something.

Restrictions rules that stop you from doing something.

Site-specific artworks that are designed for a particular location.

Welded a technique used to join pieces of metals together by heating them.



01

Yona Lee calls the bending of these stainless-steel tubes 'knots'. The shapes created with the tubes were inspired by the subway system in Seoul, South Korea.

What does this shape remind you of? Where are these tubes going?

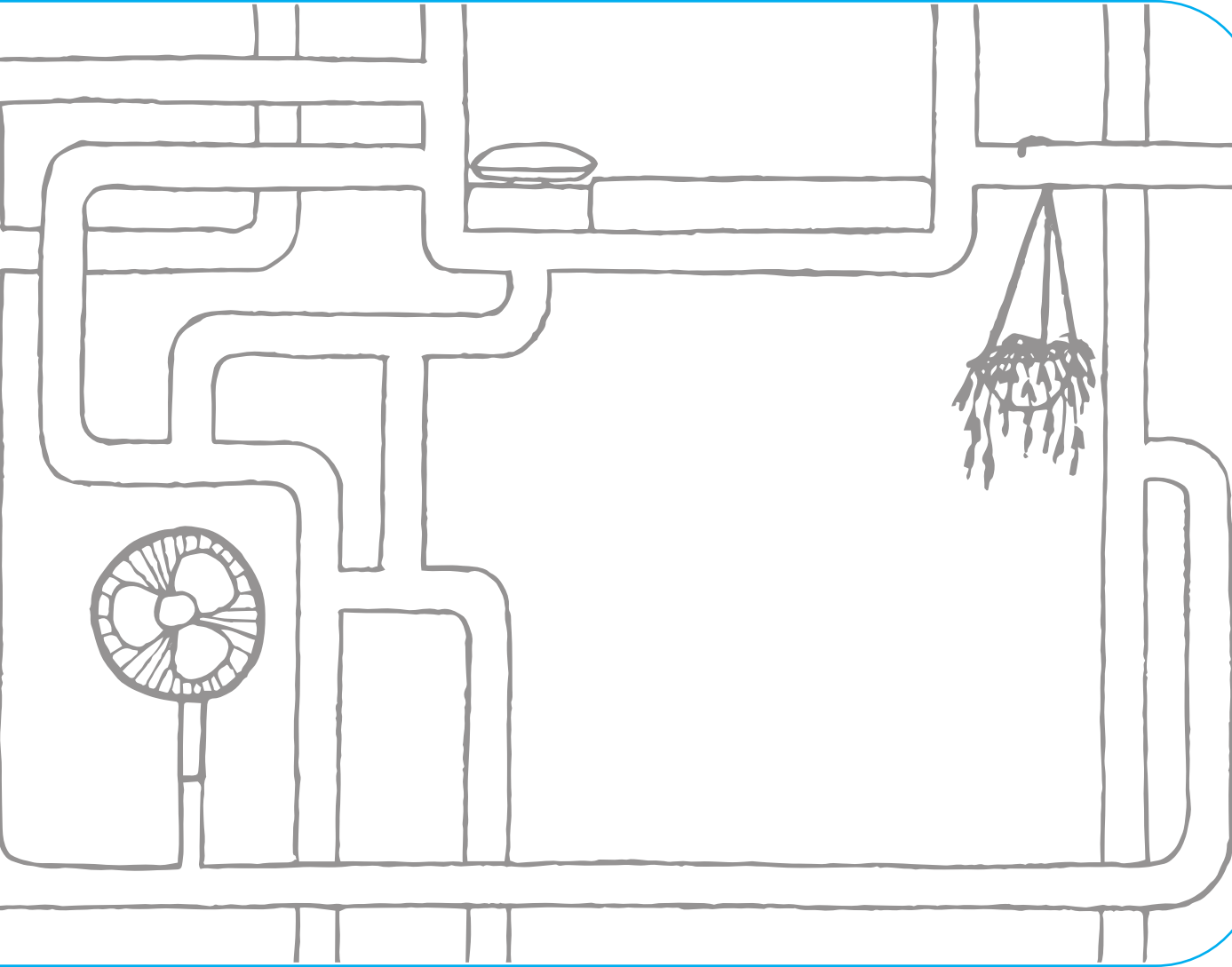
Slide your hand along the tubes and let them take you on an imaginary journey.

02

Wow! There is a bed! A fan! Even a table with a power outlet to charge your phone! *What else can you spot in this room?*

Yona Lee is constantly thinking about the **boundaries** and rules within galleries and public spaces. *Who feels frustrated being told, 'Don't do that!'*? How does this room welcome you to feel at home?

Choose a spot, **think** and **make a wish**. *What would make you feel more at home in the public spaces in your city or town?*



03

When Yona Lee went back to visit Seoul, South Korea, she spent a lot of time travelling on buses and trains. She thought about how **abstract** the streets and the lines of train network were.

Hold on to the tube and **close** your eyes. **Imagine** you are going on a bus ride ... *Where is your bus taking you? Describe or make* the noises you might hear. *What are some things you might see from the windows?*

Have you noticed that the tubes continue into Albert Park Rangipuke? When you go out of the Gallery, have a little break on a bench with a friend with some delicious snacks. Look around and think about your surroundings. *Where are the tubes going to and from?*

04

There's something strange about this room ... one of the tables is dancing high up in the ceiling! Did you know that Yona Lee is not just an amazing artist, but she is also a talented musician who plays the **cello**?

Imagine that you are the tubes in this room. **Choreograph** a dance/ bodily movement responding to the room and show it to your friends. **Stretch** your body, **lie** down and **tie** yourself in a knot, **jump** up and down – *how do you want to move?*

05

Is that a bus seat ... and soap for a giraffe? What a funny combination of objects! Yona Lee likes to be playful and bring humour into the combination and placement of her everyday objects.

Create an imaginative story featuring a bus seat, a piece of soap, and some bendy tubes. **Share** your story with education@aucklandartgallery.com

Bonus

When you make your way downstairs, **find** one more artwork by Yona Lee somewhere in the Gallery.

When you step outside the Gallery, **see** if you can **find** any objects that could be Yona Lee artworks hiding in your everyday life. Look on the streets, in the park, on the bus ... even in your home! They may be subtle, but they are EVERYWHERE!

Draw what you find ...

- ... on a walk
- ... at school
- ... on the bus, train or car
- ... at home

How could you arrange them in a big installation?

Tāmariki Guide

Yona Lee An Arrangement for 5 Rooms

AUCKLAND
ART GALLERY
TOI OTĀMAKI

