

Student worksheet

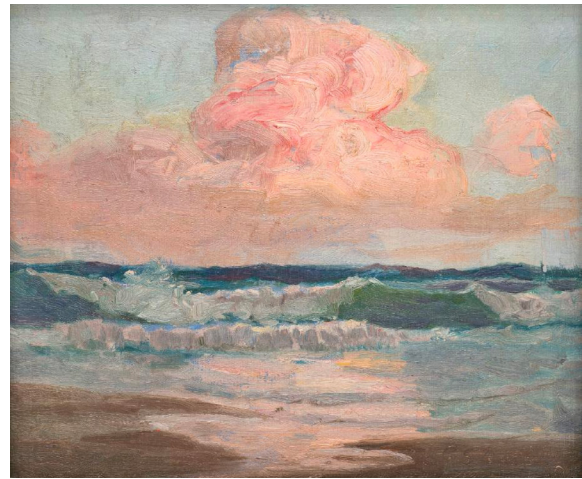
Lesson plan steps

① Check out these images:



Andō Hiroshige *Bōshū Kubota no kaigan (The Seacoast at Kubota in Awa Province)* (detail) 1858, woodcut - nishiki-e (full colour) technique, Mackelvie Trust Collection, Auckland Art Gallery Toi o Tāmaki.

www.aucklandartgallery.com/explore-art-and-ideas/artwork/11178/boshu-kubota-no-kaigan-the-seacoast-at-kubota-in-awa-province



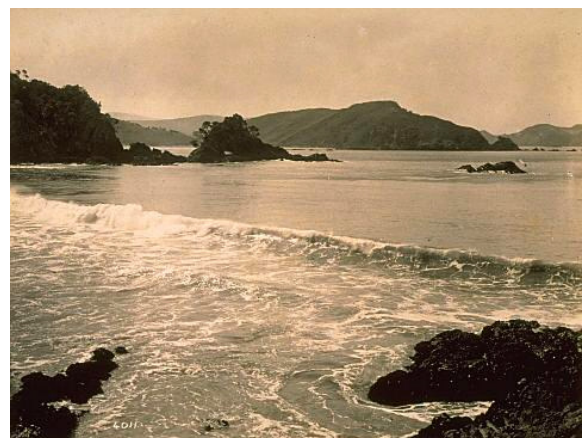
George Butler *Off Kaikoura* (detail) 1901, Auckland Art Gallery Toi o Tāmaki, purchased 1979.

www.aucklandartgallery.com/explore-art-and-ideas/artwork/5049/off-kaikoura



Carl Geissler *The Flying Dutchman* (detail) 1950, watercolour, Auckland Art Gallery Toi o Tāmaki, gift of Mr Alan Taylor, 1979.

www.aucklandartgallery.com/explore-art-and-ideas/artwork/5022/the-flying-dutchman



D G Begg *Cavalli Island, North Auckland* (detail) circa 1950, gelatin silver print, Auckland Art Gallery Toi o Tāmaki, purchased 1999.

www.aucklandartgallery.com/explore-art-and-ideas/artwork/8233/cavalli-island-north-auckland

Student worksheet

Lesson plan steps continued

- ② What do you notice about these waves? How similar and/or different are they? What kind of waves do you like?

Round circling waves, big smashing waves, smooth tunneling waves, small rolling ones, gentle lapping waves, choppy waves, others?

- ③ Start with choosing something to draw with: eg. pencil or fineliner

- A Draw a wave with as much foam and detail as you can.

- Add some colour as a wash (use watery paint so the colour is light)
- Draw back into it to emphasise certain parts (optional)
- Add some darker paint if needed

- B Make your waves translucent, slightly see-through like water.

- **TIP:** try washes, experiment with a little highlight of yellow/orange

- C Draw or paint up to 5 different types of waves.

- ④ Reflection questions:

Which wave worked the best? How did you make the wave/s appear translucent? What did you experiment with first? Which technique would you use again?



Andō Hiroshige, *Suruga Satta kaijō (The Sea off Satta in Suruga Province)*, 1858, woodcut - nishiki-e (full colour) technique, Mackelvie Trust Collection, Auckland Art Gallery Toi o Tāmaki.