

ADULT LEARNING WEEKEND WORKSHOP



Course Outline

AUCKLAND
ART GALLERY
TOI OTAMAKI

COURSE BRIEF

Image credit cover:
William Beechey's *Miss Windham*,
1828, Auckland Art Gallery Toi o Tāmaki,
purchased with assistance from the
Friends of the Auckland Art Gallery, 1976

Image credit below:
Enuake, oil on linen,
350 × 300mm, 2017

Students will be introduced to oil painting techniques to enhance their understanding of both contemporary and traditional approaches to portrait painting and drawing. Students will focus on painting one long-pose portrait, beginning with contour drawing to develop skills in creating volume and *chiaroscuro* (depth of light and shade) before progressing to *alla prima* (wet-on-wet painting).

Gallery curators will guide students on a tour of the portraits on display in the Mackelvie Gallery, with particular focus on Henry Raeburn's portrait *Master James Hay*, 1790–96 and William Beechey's *Miss Windham*, 1828.

Painting and drawing demonstrations will be given to students throughout, with critical feedback aimed at facilitating each student's individual needs and styles.



COURSE OUTLINE

Day 1 Saturday 22 June

10.30am	Introduction Drawing focusing on contour, pathways and various head positions, 10–20-minute sketches
11.15am	Gallery talk by curator, 45 minutes
12pm	Lunch
12.45pm	Line drawing, focusing on one long pose for the afternoon Colour ground wash
4pm	Finish

Day 2 Sunday 23 June

10.30am	Transfer line drawing to painting on canvas, using limited palette and concentrating on light and structure
12pm	Lunch
12.45pm	Further analysis of structure and pathways using wet-on-wet <i>alla prima</i> method
4pm	Finish

ALLA PRIMA OIL PORTRAIT PAINTING MATERIALS LIST

Materials supplied:

A2/A3 sized paper will be provided

1 × canvas no larger than A2* (420 × 600mm)

*you have the option of either having your canvas pre-toned or toning the canvas during class

Please bring the following materials:

1 × large flat palette (no plates please)

1 × odourless turpentine

2 × screw-cap jars

1 × mahl stick (optional)

1 × oil medium*

1 × roll Handee towels

1 × plastic bag for tissues and rubbish

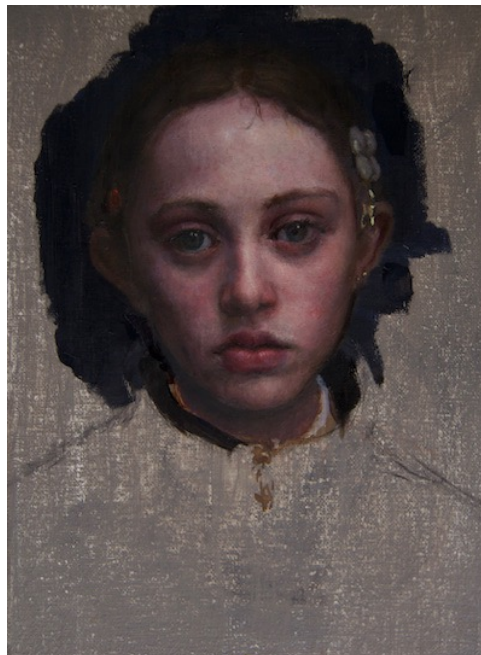
1 × palette knife

1 × plumb line or knitting needle for measuring (optional)

brushes*

*find more information on the following pages

Image courtesy of Zarahn Southon.



Oil**Three options to choose from:**

- SCHMINCKE TRANSPARENT PAINT MEDIUM 60ML
- ART SPECTRUM MEDIUM NO 1
- PEBEO COLOURLESS PAINTING MEDIUM 75ML

You have the option of using a small range of colours based upon the Zorn palette below. The Zorn palette is an excellent palette and enables you to explore the tonal and general colour range of your subject while the large palette will give you a greater range of hue, value and chroma.

I use a mixture of the oil colour brands Old Holland, Schminke, and Williamsburg

Traditional Zorn Palette of four colours*

- Titanium white
- Yellow ochre
- Cadmium light/Vermillion Red
- Ivory Black

*Google zorn palette and the 19th century artist Anders-Zorn for further information on this palette

The colours below you can add to the Zorn palette to increase colour range and are therefore optional:

- Brilliant yellow light
- Naples yellow
- Burnt umber
- Raw umber
- Brilliant pink
- Kings blue
- Ultramarine blue

Brushes

You should use brushes relative to the size of your canvas.

Studio Arts Supplies and Gordon Harris have a wide range of oil brushes in stock. If purchasing from here I recommend a range of sizes based on the sizes below.

I usually use a minimum of 3 brushes for one sitting. I designate one for my shadows, dark lights, lights, or varying hues, and one clean brush used to softly merge brush strokes.

Stationery Warehouse have good inexpensive brushes in the DAS range – their life may be shorter than professional quality, but they do the job. I recommend getting a minimum of:

- 2 × DAS Long Handle Synthetic Filbert # 18
- 2 × DAS Long Handle Synthetic Filbert # 8
- 2 × DAS Long Handle Synthetic Filbert # 4
- 2 × DAS Long Handle Synthetic Filbert # 0
- 2 × DAS Long Handle Synthetic Round # 2