

ADULT LEARNING FIGURE PAINTING IN OILS



Course Outline

AUCKLAND
ART GALLERY
TOI OTAMAKI

COURSE BRIEF

Tutor: **Zarahn Tūwharetoa Southon** (Ngāti Tūwharetoa, Ngāti Pīkiao, Ngāti Pukenga, Whakatōhea)

Times: **Saturday 3 Aug – Saturday 14 Sep** (No class on Saturday 7 Sep)
6 weeks
2–5pm

Students will be introduced to oil painting techniques to enhance their understanding of contemporary and traditional approaches to figurative oil painting and drawing. Beginning with drawing proportion and tonal oil painting, students will move onto long-pose figure painting with an emphasis on creating volume and *chiaroscuro* (light and shade).

In addition to the technical processes employed in Renaissance and Baroque Italian oil painting, students will gain a deeper understanding of the context surrounding the works' creation through supplementary guided tours from Gallery curators.

Students will spend one session in the Mackelvie Gallery drawing from the painting *Saint Sebastian*, 1625 by Italian Baroque artist Guido Reni. This experience will provide a greater understanding of the techniques used by Italian painters of the 17th century.

Painting and drawing demonstrations will be given to students throughout with critical feedback aimed at facilitating each student's individual needs and styles.

COURSE OUTLINE

Session 1
2–5pm
Studio & Mackelvie Gallery

Introduction to course and Guido Reni's Saint Sebastian

Five-minute health and safety introduction regarding fire escapes, toilets and emergency exits.

40-minute curatorial talk about Guido Reni's *Saint Sebastian*, providing historical context and information about the painting and its various versions.

One-hour drawing in the studio from block-in drawing copies, using pencil on paper.

Session 2
2–5pm
Studio

Copying from Guido Reni

Two-hour session dedicated to copying line, proportion and shadow with pencil, with discussion of Academic methods of achieving contour and tone in charcoal/pencil drawings.

Session 3
2–5pm
Studio

Drawing from a live model

1.5 hour

Introduction to plumb line and block-in drawing of the live model, focusing on the full figure.

Discussion of toned grounds and surfaces for oil painting.

Examples of my work will be shown.

1.5 hour

Quick oil sketch from the live model

Students will be encouraged to do one exercise at home.

Session 4
2–5pm
Studio

Live model: painting from the nude figure



Using Zorn palette (titanium white, yellow ochre, cadmium red light and ivory black) as a base, students will produce one painting looking at proportion and shadow shapes.

Terminology discussed:

- Dark light
- Form shadow vs cast shadow
- Highlight
- Lights
- Light lights
- Penumbra
- Reflected light
- Shadow accent/core shadow
- Terminator

Session 5
2–5pm
Studio

Live model: painting from the nude figure, two-session pose

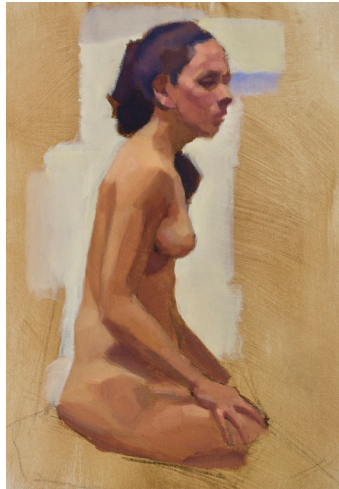
Students will paint one painting over two sessions, looking at proportion, light and shadow, and rounding.

Option of additional colours for a larger palette

Terminology discussed:

- *Chiaroscuro* (light and dark)
- Contrast
- Rhythm of light and form
- *Sfumato* (to veil, wind)
- Tonal key

Session 5 Continued
2–5pm
Studio



Using Zorn palette (titanium white, yellow ochre, cadmium red light and ivory black) as a base, students will paint one painting looking at proportion and shadow shapes.

Session 6
2–5pm
Studio

Live model: continuation from the nude figure two-session pose

Students will aim to complete the two-session painting, looking at deepening their understanding of proportion, light, shadow and rounding. Students will be encouraged to generalise the details to emphasise the roundness of the living figure and develop their skills in using a clean, soft brush to blend without losing tonal values.