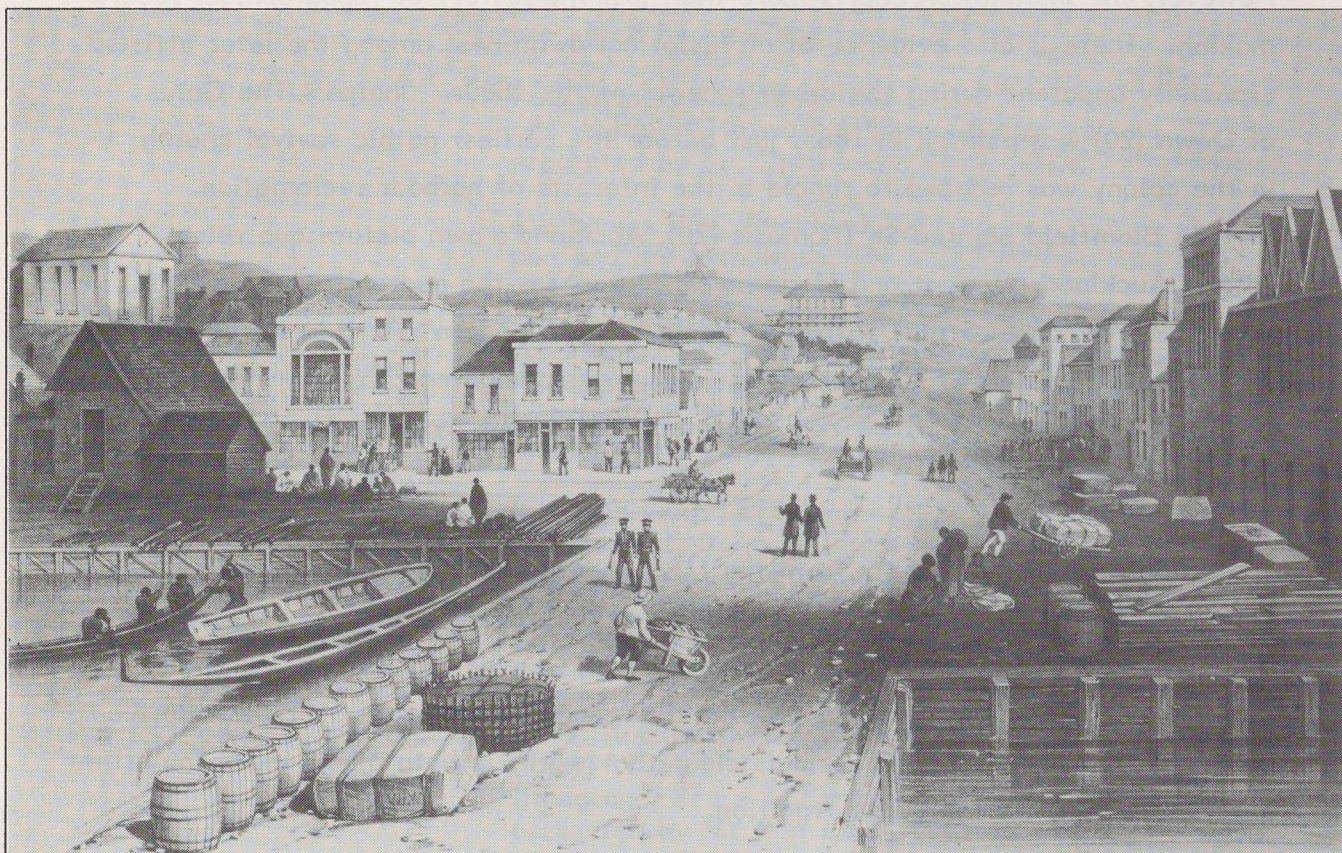


1984

THE AUCKLAND SCENE

Topographical pictures of the nineteenth century



Patrick Joseph Hogan

Auckland, New Zealand (From the new wharf) 1852

lithograph, 275 x 422 mm

An installation from the permanent collection

AUCKLAND CITY ART GALLERY

27 July to 13 September 1984

BIB 186055

1984

Auckland is a nineteenth-century city, named in 1840 by Captain Hobson as the infant colony's capital. Artists' views of the city and its environs date from these earliest years, and provide a fascinating commentary on its development. The contrast between H.Y.'s sepia sketch (1), showing Auckland as a settlement of tents, and O'Brien's view of around 1885 (21), indicate something of the transformation that overtook this landscape during the last century.

However, the installation charts more than just the history of topographical record-making. There is also evidence of an historical awareness among the later artists, especially apparent during the urban renewal of the 1880s. Sharpe's **The Gates of Dawn** (20) was painted in 1885, just before the earliest gothic revival church in the colony was reduced to rubble in the interests of harbour reclamation. In 1886 Blomfield painted St Thomas's (20), Auckland's own picturesque ruin. Aldis's **Auckland, Ancient and Modern** (27) juxtaposes the decrepit working-class housing of Wyndham Street with the cupola of the 'modern' Victoria Arcade behind. The nostalgic quality of Aldis's canvas is of course heightened by the irony that the Victoria Arcade has itself now been replaced by the more 'modern' Bank of New Zealand.

The exhibition of old masters from the Mackelvie collection (hung in the Museum from 1882) and the vigorous growth of the Auckland Society of Arts encouraged the development of a local oil painting tradition, in which landscape was the predominant genre. Despite the debates that raged last century over the relative merits of watercolours and oils, it is clear that works in both media made important contributions to our landscape tradition.

The checklist on the following two pages is arranged chronologically in order of the works' production, and does not necessarily follow the sequence on the walls.

This installation is dedicated to Una Platts, whose pioneering researches into New Zealand's art history have provided a foundation for further scholarship. Her book **The Lively Capital: Auckland 1840-1865** is still the best reference for the earliest art produced in Auckland, one which firmly locates the pictures in their social context.

Roger Blackley

Curator, Historical New Zealand Art

Watercolours and drawings

- H.Y. **[Auckland in December 1840]**
pen and ink with wash, 165 x 230 mm
presented by Sir Henry Brett, 1915 (1)
- Edward Ashworth **Auckland [Commercial Bay] 1843**
pen and ink with wash, 177 x 302 mm
presented by Sir Cecil Leys, 1935 (2)
- West View of Commercial Bay 1943**
pen and ink with wash, 227 x 378 mm
presented by Sir Cecil Leys, 1935 (3)
- Fort Street, Auckland 1843**
pen and ink with wash, 188 x 320 mm
presented by Sir Cecil Leys, 1935 (4)
- Mechanics Bay, Auckland 1843**
pen and ink with wash, 187 x 295 mm
presented by Sir Cecil Leys, 1935 (5)
- Auckland, New Zealand, from the
"Government Domain" 1843**
watercolour, 280 x 470 mm
presented by Sir Cecil Leys, 1935 (6)
- John Guise Mitford **[Grafton Gully] c1843**
watercolour, 327 x 477 mm
presented by Lt Col R.M. Rendel, 1942 (7)
- Joseph Jenner Merrett **[View of Newmarket] c1850**
watercolour, 355 x 515 mm (8)
- Patrick Joseph Hogan **No 2, Auckland, New Zealand (From Smale's
Point) 1852**
lithograph, 275 x 422 mm
presented by Mr T W Leys, 1915 (9)
- No 4, Auckland, New Zealand (From the
new wharf) 1852**
lithograph, 275 x 422 mm
presented by Mr T W Leys, 1915 (10)
- John Kinder **From veranda of Mr Reader Wood's cottage 1856**
watercolour, 290 x 247 mm
presented by Mr H A Kinder, 1937 (11)
- Old St Pauls, Auckland 1861**
watercolour, 240 x 340 mm
presented by Mr H A Kinder, 1937 (12)
- Andrew Robertson **[Auckland showing Albert Barracks] 1858**
pen and ink with watercolour, 125 x 176 mm
presented by Miss Constance Robertson, 1937 (13)
- [Auckland from Parnell] 1858**
pen and ink with watercolour, 108 x 176 mm
presented by Miss Constance Robertson, 1937 (14)

- Charles Heaphy **[St Pauls Church, with the Churton Memorial, Princes Street]** c1860
watercolour, 328 x 271 mm
presented by Mrs Tolhurst, 1947 (15)
- William Eastwood **Auckland 25 April 1863 [foot of Hobson Street]**
pen and ink with wash, 127 x 223 mm (16)
- Thomas Monkhouse **Auckland, NZ [from the Domain]** 1867
watercolour, 283 x 700 mm (17)
- Alfred Sharpe **[Taurarua, or Judges Bay]** 1874
watercolour, 341 x 619 mm (18)
- [The environs of Auckland: Newmarket from Mountain Road]**
watercolour, 355 x 665 mm (19)
- The Gates of Dawn, Auckland NZ** 1885
watercolour, 441 x 959 mm
presented by Mrs Tolhurst, 1947 (20)
- George O'Brien **[View of Auckland from Khyber Pass]** c1885
watercolour, 354 x 610 mm (21)

Oil paintings

- E Webbe
after John Logan Campbell **Commercial Bay, Auckland 1840**
oil on paper, 118 x 190 mm (22)
- Mrs K Burcher
after Charles Heaphy **[Fort Street, Auckland in 1852]**
oil on canvas, 410 x 560 mm
presented by the Hon E Mitchelson, 1915 (23)
- Sam Stuart **[Fort Britomart]** 1869
oil on paper, laid on canvas, 406 x 710 mm
presented by Mr T W Leys, 1915 (24)
- Charles Blomfield **Our harbour from Birkenhead** 1884
oil on canvas, 300 x 608 mm
presented by Mr H D Buddle, 1952 (25)
- Old Church, near Tamaki** 1886
oil on cardboard, 205 x 350 mm
presented by Sir John Logan Campbell, 1887 (26)
- A Aldis **Auckland, Ancient and Modern: Wyndham Street** c1889
oil on canvas, 305 x 405 mm (27)
- Edward William Payton **[Orakei, Auckland]**
oil on canvas, 362 x 665 mm (28)
- Horace Moore-Jones **[The departure of the Ninth Contingent for the South African War]** 1902
oil on canvas, 640 x 1350 mm
presented by the Hon George Fowlds, 1902 (29)
- Claus Edward Fristrom **[Gum trees, Great North Road, Grey Lynn]** 1903
oil on canvas, 260 x 405 mm
presented by Mr E Earle Vaile, 1956 (30)

AUCKLAND PUBLIC LIBRARIES



3 0001 00540734 3