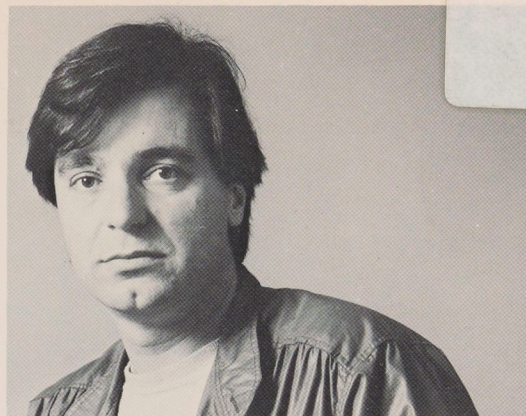


1981

AUCKLAND CITY ART GALLERY



Robin Morrison, 1981



Pink Caravan, Otago Peninsula

FROM THE ROAD

The natural and human landscapes of the South Island made a strong impression on me when I was a student at Otago University in 1964 and 1965. I was very aware of the atmosphere of the country and its difference from the North Island.

On returning to New Zealand after five years in Europe my involvement in photography grew and in 1975 I went to the South Island for a month on an assignment for Air New Zealand. The need to return and photograph the country in my own way, without a client in mind, became very strong. In 1979 I received a grant from the Arts Council, which allowed me and my family to travel for six months in the South Island. I photographed the area as I saw it, concentrating on the man-made landscape and avoiding the purely scenic aspects of the country. I spent nearly seven months in the winter of 1979 travelling over 18,000 miles through the South Island visiting my favourite areas two or three times, building up a collection of colour transparencies for later editing. I chose to work in colour to show best the quality of light between the different regions and to illustrate in particular how people express their sense of colour in the way they paint their buildings and the way these figure in the landscape. Whatever I saw from the road that interested me I photographed. The freedom was overwhelming at first but gradually themes appeared as the body of work grew.

From the thousands of photographs taken I have edited 155 which appear in the book 'The South Island of New Zealand From the Road' published in June 1981 by Alister Taylor. Of the fifty photographs in this exhibition some are from the book and some taken from the pool of South Island work. They have been selected from a more particular viewpoint.

Biography

Born in Auckland in 1944.

Involvement in photography started in London in the late (1960's).

Work first appeared in New Zealand in the Listener which has remained his major outlet for the past ten years.

Publications:

Thorndon Calendar 1976, published by the Thorndon Society

Ponsonby Calendar 1977, self published

Clutha Calendar 1979, published by Alister Taylor
 Images of a House — a book of black and white photographs — published in 1978 by Alister Taylor
 Photographs from the above collections exhibited in Wellington in the travelling Active Eye exhibition and in shows at Snaps Gallery and Real Pictures in Auckland. Represented in the Auckland City Art Gallery collection.

AUCKLAND PUBLIC LIBRARIES



3 0001 00539456 6

FROM THE ROAD

Fifty South Island photographs by Robin Morrison

Auckland City Art Gallery

June 24 — August 2 1981

An exhibition organised by the Auckland City Art Gallery toured by
 the New Zealand Art Gallery Directors Council
 Sponsored by H.E. Perry Ltd with assistance from the Queen Elizabeth
 II Arts Council of New Zealand

BIB 185496

1981

CATALOGUE

1. Cream House, Canterbury Plains
2. Yellow House, Canterbury
3. Corrugated Iron Hut, Selwyn Huts, Canterbury
4. Pink Hut, Lower Selwyn Huts, Canterbury
5. Hut and Man, Birdlings Flat, Canterbury
6. Hut, Birdlings Flat, Canterbury
7. Community Centre, Kaiapoi, Canterbury
8. Funeral Directors, Kaiapoi, Canterbury
9. Masonic Lodge, Rakaia, Canterbury
10. Quinn's Arcade, Waimate, Canterbury
11. Cream House, Greymouth, West Coast
12. Corrugated Iron Shed, Lyttelton
13. Hotel, Ross, West Coast
14. Phoenix Assurance Company, Greymouth, West Coast
15. Masonic Lodge, Westport, West Coast
16. Masonic Lodge, Hokitika, West Coast
17. Hut, Stafford, West Coast
18. Friendly Store, Granity, West Coast
19. John McGregor and Company, Dunedin
20. Surf Bathing Pavillion, St Clair, Dunedin
21. Portobello Hotel, Otago Peninsula
22. Raki-Ura, Place of the Setting Sun, Otago Peninsula
23. Crib and Yellow Car, Otago Peninsula
24. 'Hestbank', Brighton, Otago
25. Royal Hotel, Naseby, Central Otago
26. Sutton Station, Central Otago
27. Linkwater Memorial Hall, Marlborough
28. Wairau Valley Hall, Marlborough
29. Green House, Richmond, Nelson
30. 'Coronet View', Queenstown
31. Fails Fish Cafe, Christchurch
32. Tim Jamieson, Aramoana, Otago
33. Patric's Billiard Room, Mahinerangi, Otago
34. Doll, Old Seacliff Mental Hospital, Otago
35. Rachel and Fanny Short, Bannockburn, Central Otago
36. Jane and Ted Lawrence, Bannockburn, Central Otago
37. Bus Station, Dunedin
38. Railway Station, Dunedin
39. Motel Lounge, Pakawau, Golden Bay
40. Ted Duggan's Store, Matakau, Central Otago
41. Fred and Myrtle Flutey's Paua Shell Parlour, Bluff
42. Murrell's Guest House, Lake Manapouri
43. Bar of Red Lion Hotel, Hokitika, West Coast
44. Lublow Tailors, Lyttelton
45. Caravan, Birdlings Flat, Canterbury
46. Caravan I, Leithfield Beach, Canterbury
47. Caravan II, Leithfield Beach, Canterbury
48. Caravan III, Leithfield Beach, Canterbury
49. Caravan, Seconville, West Coast
50. Pink Caravan, Otago Peninsula