

New Zealand Painting

**1965**

New Zealand Painting

**1965**

Since 1957, this Gallery has mounted an annual exhibition of contemporary New Zealand painting; initially these were a series of eight-man shows which in 1961 were replaced by anthologies. The exhibitions had two major purposes: to contribute something towards lessening the isolation of one centre from another, and to attempt a definition of current directions and standards.

While internal isolation is still a problem it is now less serious than previously and the second purpose of the exhibitions has become the most important. Ideally these anthologies should demonstrate the strengths and weaknesses of contemporary New Zealand painting. However, significant changes in the cultural environment over the past three years have made this intention increasingly difficult to achieve. The heavy demands now made on the more important painters have made their major works difficult to obtain. Collectors are understandably unwilling to part with works they have recently acquired for the length of time necessary for these exhibitions to tour the country.

Consequently a number of these painters are represented in this current anthology by relatively minor works. The collection, then, tends to be dominated by the work of the more promising and enterprising of the younger painters.

Within these limitations, however, the exhibition does reveal a number of interesting developments in New Zealand painting. There has been a marked increase in both scale and level of accomplishment. But perhaps the most significant development is the growing manifestation of two distinct regional styles; those of Auckland and Canterbury.

For a number of reasons the Auckland painters have the greater coherence as a group. Perhaps the greater exhibiting opportunities and confidence enjoyed by these painters have contributed to this. Nonetheless the Canterbury style is equally obvious.

Whether the idiom employed by the Auckland painters is completely abstract, as in Ralph Hotere, John Perry or Milan Mrkusich, or figurative as in Colin McCahon, Don Binney, Patrick Hanly or Ross Ritchie, their work is marked by common characteristics of style. These might generally be remarked as a certain austerity and directness; hard-edge or hard-core imagery with a minimum of ambiguity. There seems to be a general avoidance of technical bravura in favour of a simply fashioned, assertive image.

On the other hand, the Canterbury painters seem to be much more painterly. M. T. Woollaston, Rudolph Gopas and Philip Trusttum, while disparate in intention have an apparently common commitment to a haptic style. Painting in the South appears to be developing along a more expressionist line.

There are, of course, historical precedents for these two styles. The nineteenth century watercolourists working in the Auckland area demonstrated a crispness of technique similar to that of the contemporary painters. While it may seem a far cry from Kinder, Hoyte and Sharpe to Hanly, Binney and McCahon, there are certain undeniable similarities. In Canterbury the work of Petrus van der Velden at the turn of the century could be seen, perhaps, as a harbinger of the contemporary style.

While it may yet be too early to point to any continuing tradition in New Zealand painting, it is at least possible to see it as a distinct development — as something more than an isolated collection of painters. Not only are the painters now much more aware of each other, they have also become aware of those that preceded them. It is from such awareness that national schools draw their strength and acquire the facility to absorb and modify external influences.

One other aspect of this particular exhibition should be noted. A great many New Zealand painters have chosen to live and work abroad and this has generally meant that their work is no longer seen here. Two such painters, Bill Culbert and Michael Browne, have been included in this anthology and it is hoped that future exhibitions will be able to do more in this direction.

*Sizes are given in inches, height before width. Unless otherwise stated works have been lent by the artist and are for sale. Enquiries regarding purchases should be directed to the Auckland City Art Gallery.*

---



## Gretchen Albrecht

*Born Auckland 1943. Studied Elam School of Fine Arts, Auckland, 1960-63. Honours year in Painting 1964.*

*Exhibited: Contemporary New Zealand Painting Auckland City Art Gallery 1964; One-man Exhibition, Ikon Gallery 1964. Lives in Auckland.*

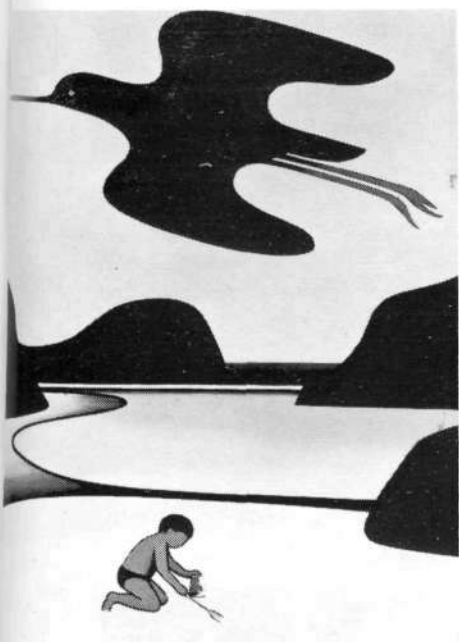
### 1 REGATTA 1

acrylic on canvas 32x38

### 2 REGATTA 2

acrylic & oil on canvas 32x38

1



## Don Binney

*Born Auckland 1940. Studied Elam School of Fine Arts Auckland, 1958-61.*

*Exhibited: Contemporary N.Z. Painting, A.C.A.G. 1962, 1963, 1964. Paris Biennale, 1963; New Zealand Contemporary Painting and Ceramics, Japan and South East Asia, 1964; The Group, Christchurch, 1964; Contemporary Painting in New Zealand, Commonwealth Institute, London, 1965; Eight New Zealand Artists, Australia, 1965. One-man Exhibitions Ikon Gallery, Auckland, 1963-64. Lives in Auckland.*

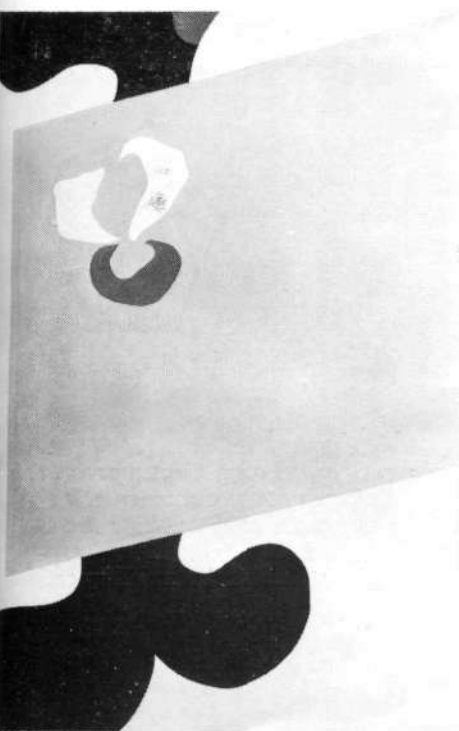
### 3 SUNDAY, CITY DOMAIN

oil on hardboard 52x24

### 4 HIGH SUMMER, STEWART ISLAND

oil on hardboard 48x36

4



## Gordon Brown

*Born Wellington 1931. Studied: Wellington Technical College and Canterbury School of Art, Christchurch; Graduated 1955. National Library School 1960.*

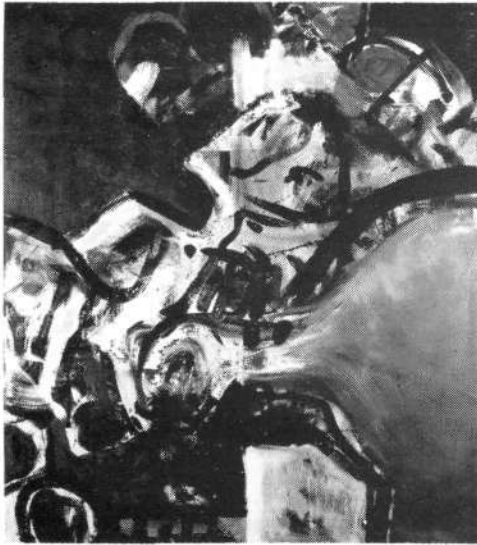
*Exhibited: The Group, Christchurch, 1962, 1965; Three Wellington Painters, A.C.A.G. and Christchurch 1959; N.Z. Contemporary Painting, A.C.A.G. 1962, 1963, 1964. One-man Exhibitions: Wellington 1962; Uptown Gallery, Auckland 1964. Assistant, Auckland City Art Gallery.*

### 5 PAINTING MID 1965

casein on hardboard 33 $\frac{1}{4}$ x22 $\frac{1}{2}$

5





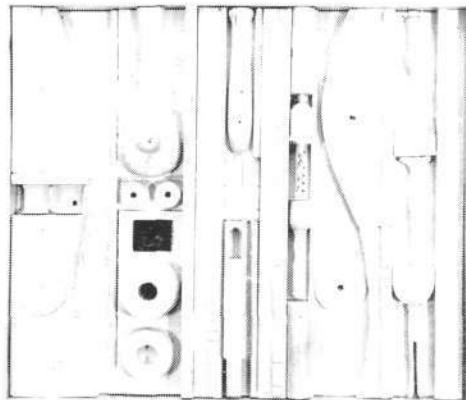
## Michael Browne

*Born 1930. Studied Canterbury School of Art, Royal College of Art, London, and with S. W. Hayter in Paris.  
Exhibited: New Zealand, Japan, France and Amsterdam.  
Teaches at Hammersmith College of Art, London.*

6 GANULF'S STAFF  
oil on canvas 90x70

7 BROKEN RIDER  
oil on canvas 51x44

7



## John Coley

*Born Palmerston North 1935. Studied: Canterbury School of Art 1955-1957. Visited U.S.A. on Arts Council Award 1964.  
Exhibited: Contemporary N.Z. Painting, A.C.A.G. 1961, 1962, 1963; The Group, Christchurch 1959, 1960, 1961, 1962, 1963, 1964; N.Z. Art, Soviet Union 1957-58; 20-20 Vision, Christchurch 1964; Three Canterbury Painters, A.C.A.G. 1960.  
One-man Exhibitions: Gallery 91, Christchurch 1959.  
Lives in Christchurch.*

8 RELIEF WITH MIRROR  
found objects, wood 16½x18

9 FIVE ELEMENT MANUAL  
painted wood 11½x13½

10 SIX ELEMENT MANUAL  
painted wood 15½x17

8



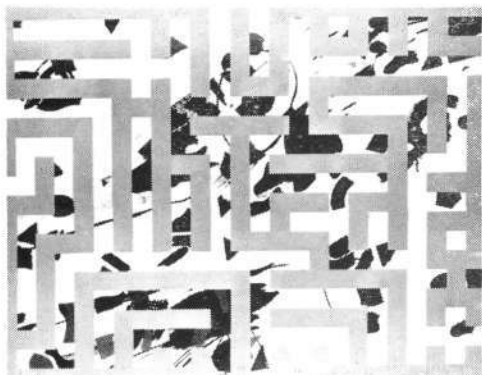
## Katherine Coolahan

*Born Sydney 1929. Associate Sydney Technical College, L.S.I.A. London. Resident in N.Z. since 1952.  
Exhibited: Contemporary Art Society, Sydney; Contemporary N.Z. Painting A.C.A.G. 1964; Several group exhibitions in N.Z. as a printmaker and painter.  
Lives in Wellington.*

11 TREE TOMATO  
acrylic on hardboard 36x48

12 TREVALLY  
acrylic on hardboard 23x36

11



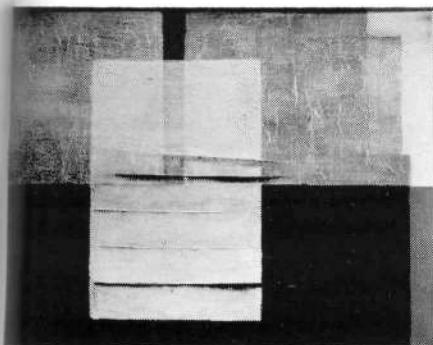
## Bill Culbert

*Born 1935, Port Chalmers. Studied: Canterbury University School of Art; N.Z. National Art Gallery Travelling Scholarship 1957; Royal College of Art, London 1957-1960. Fellow in Fine Art, Nottingham University 1962-65.  
Exhibited: The Group, Christchurch 1955-56; London Group; Young Contemporaries; Young Commonwealth Artists; Towards Art, Royal College of Art; Commonwealth Biennale of Abstract Painting. One-man Exhibitions: Commonwealth Institute Art Gallery, London 1961; Edinburgh Festival 1961; Nottingham University Art Gallery 1963, 1964, 1965; Picadilly Gallery, London 1963; McRoberts and Tunnard Gallery, London 1965.  
Lives in London.*

13 CLOSE TOLERANCES  
oil on canvas 50x80

14 INGRESS  
oil on canvas 40x50

14



15

## John Drawbridge

*Born Wellington 1930. National Art Gallery Travelling Scholarship 1957. Studied London and Paris, 1957-1963; 1963 commissioned to paint mural N.Z. House, London. Exhibited: First Commonwealth Biennale of Abstract Art, Commonwealth Institute, London 1963; Zwemmer Gallery, London; Picadilly Gallery, London; Contemporary Painting in N.Z., Commonwealth Institute, London 1965. One-man Exhibitions: Redfern Gallery, London 1963; Uptown Gallery, Auckland 1964; Ikon Gallery, Auckland 1964. Teaches painting School of Design, Wellington Polytechnic.*

### 15 COASTLINE, ISLAND BAY

p.v.a. on canvas 40x60



## Robert Ellis

*Born Northampton, England 1929. Studied at Northampton School of Art 1944-47; Royal College of Art, London 1949-1952. Exhibited: Royal Academy; Royal Watercolour Society; Royal Artist's International Association; Society for Education through Art; 1957 Festival of Britain; Contemporary N.Z. Painting, A.C.A.G. 1962, 1963, 1964; Contemporary Painting in N.Z., Commonwealth Institute, London 1965; Eight N.Z. Artists, Australia, 1965. One-man Exhibitions 1959, 1960, 1961, 1963, 1964; Sydney 1964; Adelaide 1964; Melbourne 1965. Barry Lett Galleries, Auckland 1965. Senior Lecturer, Elam School of Fine Arts, Auckland.*

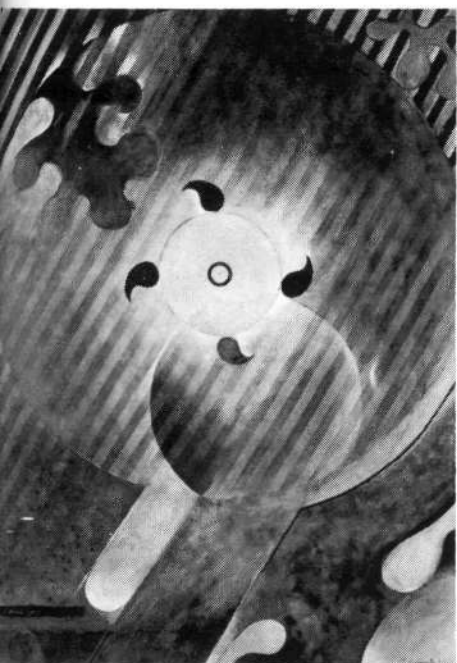
### 16 CITY WITH INTRUDING RIVER

oil and acrylic on hardboard 48x35½

### 17 RIVER WINDING THROUGH THE CITY

oil on hardboard 48x48

16



## Tim Garrity

*Born London 1931. Studied: philosophy Canterbury University; architecture, briefly, Auckland University; worked with Colin McCahon 1962-63. Exhibited: Contemporary N.Z. Painting, A.C.A.G. 1961, 1962, 1963; The Group, Christchurch 1961; Paris Biennale 1963; N.Z. Contemporary Painting and Ceramics, Japan and South East Asia 1964; Eight N.Z. Artists, Australia 1965; Ikon Gallery, Auckland 1965. Lives and teaches in Bari, Italy.*

### 18 I LOVE YOU

gouache on paper 30x22½

### 19 PAINTING, BARI 1965

gouache on paper 30x22½

18



## Rudolf Gopas

*Born Lithuania 1913. Studied: Kannas, Lithuania and later in Austria, Italy and Greece. Resident in N.Z. since 1949.*

*Exhibited: Contemporary N.Z. Painting, A.C.A.G. 1961, 1962, 1963, 1964; N.Z. Contemporary Painting and Ceramics, Japan and South East Asia 1965; Contemporary Painting in N.Z., Commonwealth Institute, London 1965. Lecturer in Painting, School of Art, University of Canterbury.*

### 20 OARO

p.v.a. canvas on board 41x36

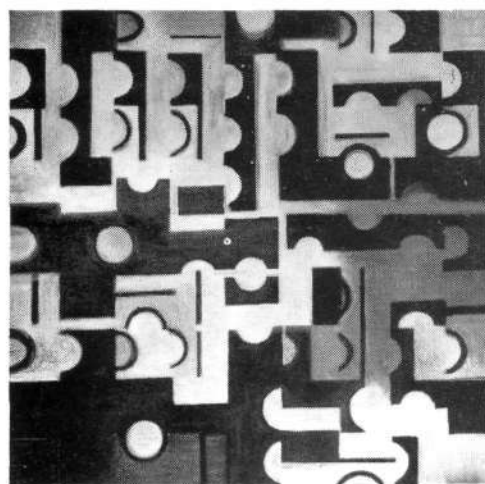
### 21 PACIFIC COAST I

p.v.a. canvas on board 40½x42½

### 22 PACIFIC COAST III

p.v.a. canvas on board 28½x30

20



## David Graham

*Born Christchurch 1928. Studied Victoria University 1946-1947. Began painting 1958. Exhibited: Contemporary N.Z. Painting, A.C.A.G., 1962, 1963; Christchurch Group. Lives in Christchurch.*

### 23 SET ONE

p.v.a. on hardboard 30x30

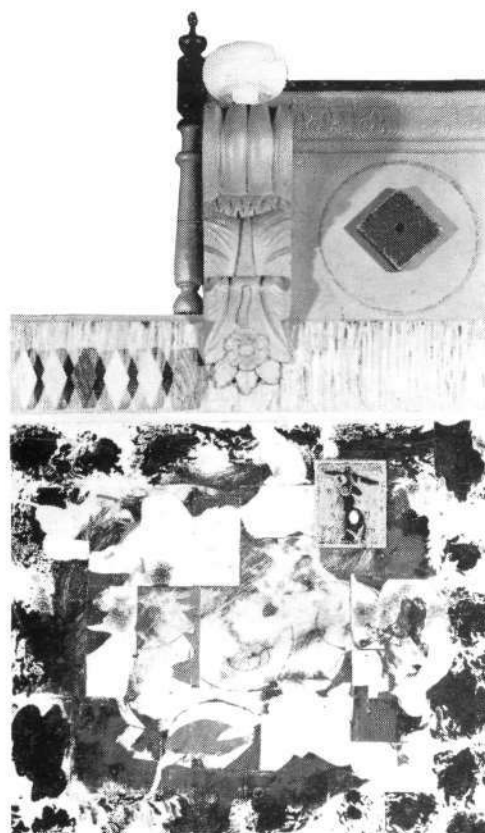
### 24 SET THREE

p.v.a. on hardboard 30x30

### 25 SET FIVE

p.v.a. on hardboard 30x30

23



## David Graves

*Born Estancia, New Mexico 1931. Studied Chouinard Institute of Art, Los Angeles. Exhibited: Artists of Los Angeles 1959, 1960, 1961, 1962; Californian Water Colour Society 1960-61, 1961-1962; Californian State Exhibition 1959. Teaches, School of Design, Wellington.*

### 26 ADIMAX III

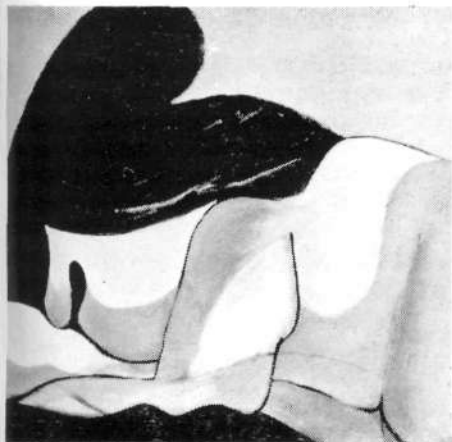
p.v.a. and construction 48¾x28½

### 27 AUTOBIOGRAPHICAL SELF PORTRAIT WITH HANDLES

p.v.a. and construction 48x39½

26





28

## Patrick Hanly

*Born Palmerston North 1932. Studied Canterbury School of Art for four years. Worked in London, Holland, Italy and Spain 1957-1962. Exhibited: London Group; Royal Society of British Artists; Young Contemporaries, London; John Moore's Exhibition; Commonwealth Artists, Edinburgh Festival; Paris Biennale 1963, 1965; Contemporary N.Z. Painting, A.C.A.G. 1962, 1963, 1964; N.Z. Contemporary Painting and Ceramics, Japan and South East Asia 1964; International Print Biennale, Tokyo 1964; Contemporary Painting in N.Z., Commonwealth Institute, London 1965; Eight N.Z. Artists, Australia 1965. One-man Exhibitions: Christchurch 1963; Centre Gallery, Wellington 1963; Auckland, Ikon Gallery 1962, 1963, 1964; Barry Lett Galleries 1965. Lives in Auckland.*

28 GIRL ASLEEP 20  
oil on canvas 33x36

29 GIRL ASLEEP 22  
oil on canvas 30x38

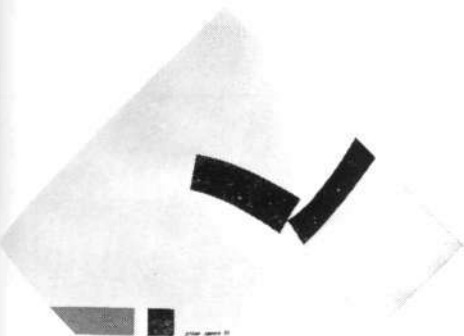


30

## Louise Henderson

*Born Paris. Studied and lectured at Canterbury School of Art. Moved to Auckland in 1950 and studied at Elam School of Fine Arts with John Weeks. Studied with Metzinger in Paris 1951. Worked in the Middle East 1955-1958. Exhibited: Four Painters, A.C.A.G. 1953; A.R.A., London 1956; London Group 1957; Eight New Zealand Painters, A.C.A.G. 1958; Contemporary N.Z. Painting, A.C.A.G. 1961, 1962, 1963, 1964; N.Z. Contemporary Painting and Ceramics, Japan and South East Asia 1964; London, Paris, Brussels 1965. One-man Exhibitions: A.C.A.G. 1953; Centre Gallery, Wellington 1954, 1964; Macquarie Galleries, Sydney 1959, 1960; John Leech Gallery, Auckland 1963; Ikon Gallery, Auckland (with Mrkusich) 1965; Dunedin Art Gallery 1965. Lives in Auckland.*

30 CLOUD AND WATER SERIES 9  
oil on canvas 28x39½



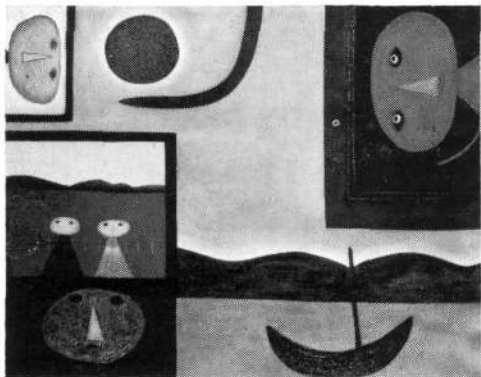
## Ralph Hotere

*Born 1931. Awarded N.Z. Art Fellowship 1961-65; Sponsored by Karolyi International Fellowship in France and Italy 1962-63. Exhibited: Dunedin Art Gallery 1952; Northland Art Society 1958, 1959, 1960; Contemporary N.Z. Painting, A.C.A.G. 1961; Galerie Chandor, Tourettes Sur Loup, France 1962; Middlesbrough City Art Gallery, England 1963; London Group R.B.A. Exhibited: Dunedin Art Gallery 1952; Northland Art Society 1958, 1959, 1960; Contemporary N.Z. Painting, A.C.A.G. 1961; Galerie Chandor, Tourettes Sur Loup, France 1962; Middlesbrough City Art Gallery, England 1963; London Group R.B.A. Galleries Royal College of Art 1963; Whitechapel Gallery, London 1964; Redfern Gallery, London 1964; Qantas Gallery, London 1964; Quixote Galleries, Sydney 1965; Barry Lett Galleries, Auckland 1965. Lives in Auckland.*

31 GREEN SQUARE I  
p.v.a. on canvas 40x40

32 GREEN SQUARE II  
p.v.a. on canvas (diamond) 40x40

33 33 GREEN SQUARE III  
p.v.a. on canvas (diamond) 40x40



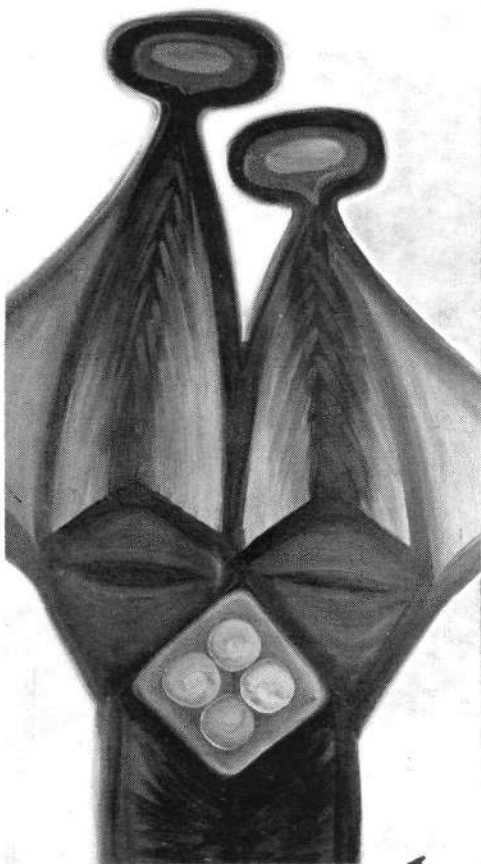
34

## Michael Illingworth

*Born England 1932. Arrived N.Z. 1952. Returned to Europe 1959-61. Resident in N.Z. since 1961. Awarded first Frances Hodgkins Fellowship, University of Otago, 1965. Exhibited: London; Paris; Princeton, New Jersey. One-man Exhibitions: Maxwell Gallery, San Francisco; New Vision Gallery, Auckland 1961; Ikon Gallery, Auckland, 1962; Barry Lett Galleries, Auckland 1965. Lives in Auckland.*

34 WHAT LIES BETWEEN THESE  
FRAGMENTS OF REFERENCE  
oil on canvas 24x30

35 PAINTING WITH RAINBOW V  
oil on canvas 35½x36½

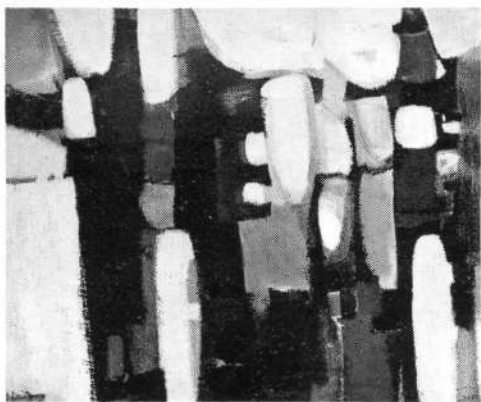


## Eric Lee-Johnson

*Born Suva, Fiji 1908. Studied: Elam School of Fine Arts, Central School of Arts and Crafts, London and Camberwell School. Returned to New Zealand in 1938. Represented in most public collections in N.Z. Exhibited: South London Group; Five N.Z. Watercolourists, A.C.A.G. 1958 and extensively throughout N.Z. Lives in Waihi.*

36 HOPEFUL IMAGE  
oil on hardboard 27x48

36

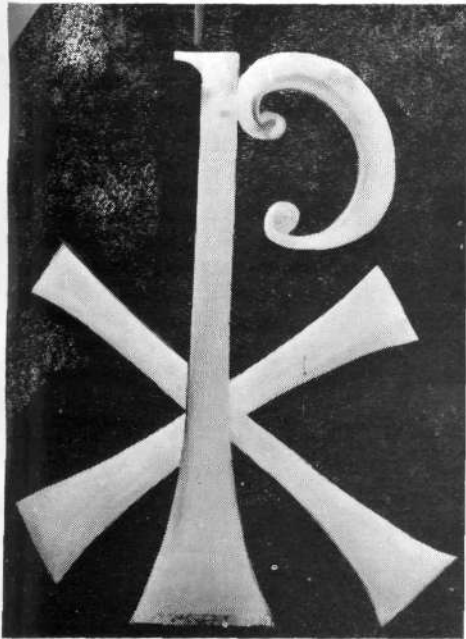


59

## William Jones

*Born Liverpool 1923. Studied: Hereford School of Art 1933-35; Liverpool School of Art 1938-40; Elam School of Art 1952-53. Resident in N.Z. since 1951. Exhibited: N.Z. Art, Soviet Union 1957-58; Contemporary N.Z. Painting A.C.A.G. 1961; Pan Pacific Young Painters, Japan. One-man Exhibitions: John Leech Gallery, Auckland 1964; New Vision Gallery, Auckland 1965. Lives and teaches in Palmerston North.*

59 ENCOUNTER III  
oil, canvas on hardboard 30x36



## Colin McCahon

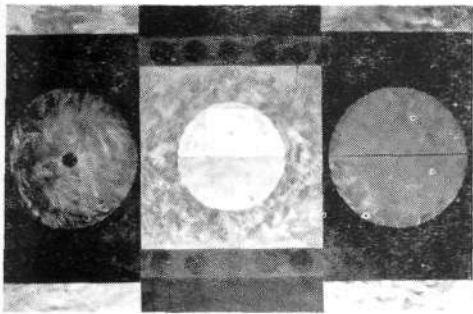
Born Timaru 1919. Studied Dunedin School of Art. From 1939, lived in Nelson, Wellington and Christchurch, moving to Auckland in 1953 (Staff Auckland City Art Gallery). In 1950 visited Australia, and in 1958 the United States of America. Exhibited: *The Group*, Christchurch, regularly from 1948; *N.Z. Art*, Soviet Union 1957-58; *Painting from the Pacific*, A.C.A.G. 1961; *Commonwealth Art Today*, London 1962; *Contemporary N.Z. Painting*, A.C.A.G. 1961, 1962, 1963, 1964; *Retrospective exhibition* (with M. T. Woollaston) A.C.A.G. 1963; *N.Z. Contemporary Painting and Ceramics*, Japan and South East Asia 1964; *Contemporary Painting in N.Z.*, Commonwealth Institute, London 1965; *Commonwealth Art Treasures*, London 1965; *Eight N.Z. Artists*, Australia 1965. First one-man exhibition in 1947, and subsequent annual one-man exhibitions in Auckland, Wellington, Christchurch and Dunedin.

Lecturer in Painting, Elam School of Fine Arts, Auckland.

37 X.P.

p.v.a. on hardboard 48x36

37



## Milan Mrkusich

Born Dargaville 1925. Largely self-taught. Began painting in an abstract manner 1946. Exhibited: *Contemporary Artists* 1950, 1951; *Painting from the Pacific*, A.C.A.G. 1961; *Contemporary N.Z. Painting*, A.C.A.G. 1961, 1962, 1963, 1964; *Commonwealth Art Today*, London 1962-63; *N.Z. Contemporary Painting and Ceramics*, Japan and South East Asia 1964; *Contemporary Painting in N.Z.*, Commonwealth Institute, London, 1965; *Eight N.Z. Artists*, Australia, 1965; London, Paris, Brussels 1965; *One-man Exhibitions*: Auckland Society of Arts 1957; Ikon Gallery 1961, 1962, 1965 (with Louise Henderson). Lives in Auckland.

38 EMBLEM III 1965

oil on canvas 48x33½

39 GOLDEN CENTRE  
WITH TWO ELEMENTS

oil on canvas 46x69¾

39

## John Perry

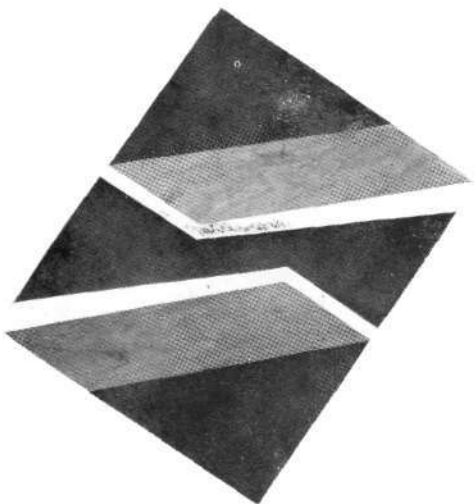
Born Auckland 1943. Studied Elam School of Art 1960-63. Honours in Painting 1964. Exhibited: *Painters of Promise*, Auckland Society of Arts 1963; *Five Young Painters*, Uptown Gallery, Auckland 1964; *Contemporary N.Z. Painting*, A.C.A.G. 1964; Paris Biennale 1965; London, Paris, Brussels 1965; *One-man Exhibitions*: Auckland Society of Arts 1964; Uptown Gallery, Auckland 1964; Barry Lett Galleries, Auckland (with Ross Ritchie) 1965. Lives in Auckland.

40 PAINTING

mixed media on hardboard 30x23¾

41 HAT TRICK

mixed media on hardboard 67x67



40



## Ross Ritchie

*Born Wellington 1941. Attended Wellington Technical College School of Design for 18 months; otherwise no formal training.*

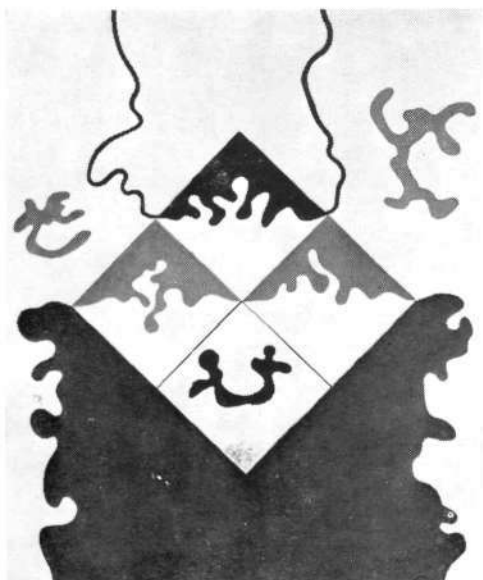
*Exhibited: Contemporary N.Z. Painting, A.C.A.G. 1964; Contemporary Painting in N.Z., Commonwealth Institute, London 1965; Eight N.Z. Artists, Australia 1965. One-man Exhibitions: Wellington 1964-65; Uptown Gallery, Auckland 1965 (with Jeff Macklin); Barry Lett Galleries, Auckland 1965 (with John Perry). Lives in Auckland.*

42 JOHNSONVILLE, MARCH '48  
oil on canvas 60x48

43 LYALL BAY, AUGUST '56  
oil on canvas 60x48

44 REEFTON, JUNE '63  
oil on canvas 72x60

42



## Theo Schoon

*Born Keboemen, Central Java 1915. Studied: School of Art, Rotterdam 1930; Balinese School of Painting and Sculpture, Bali; Canterbury School of Art 1939-40. Resident in New Zealand since 1939.*

*One-man Exhibition: New Vision Gallery, Auckland 1965. Lives in Auckland.*

60 ONE MAN'S PAINTING IS  
ANOTHER'S RORSCHACH TEST  
p.v.a. on hardboard 54x48

60



## Michael Smither

*Born 1940. Studied Elam School of Fine Art 1960-61.*

*Exhibited: Contemporary N.Z. Painting, A.C.A.G. 1961-62. One-man Exhibitions: Auckland, Wellington, Dunedin and New Plymouth. Lives in New Plymouth.*

45 MOTHER AND CHILD  
oil on hardboard 32½x30

45



## Paul Tangata

*Born Atiu, Cook Islands 1942. Studied Elam School of Fine Art, Auckland 1961-64. Honours year in Painting 1965.*

*Exhibited: Contemporary N.Z. Painting, A.C.A.G. 1964. One-man Exhibitions: Uptown Gallery, Auckland 1964; Barry Lett Galleries, Auckland 1965. Lives in Auckland.*

46 EAST COAST AND WEST COAST  
oil on hardboard 29x33

47 BEACH ON BOTH SIDES  
oil on hardboard 46x36

46



## Philip Trusttum

*Born Raetihi 1940. Studied Canterbury School of Fine Art 1961-64.*

*Exhibited: The Group, Christchurch; Contemporary N.Z. Painting, A.C.A.G. 1964; Contemporary Painting in N.Z., Commonwealth Institute, London 1965. One-man Exhibitions: New Vision Gallery, Auckland 1965. Lives in Christchurch.*

48 THE NECKLACE  
oil on hardboard 96x48

49 WOMAN  
p.v.a. and oil on hardboard 96x48

50 BIRTH  
oil on hardboard 72x48

50



## Susan Watson

*Born 1945. Studied Elam School of Fine Art.*

*Exhibited: Contemporary N.Z. Painting, A.C.A.G. 1964; The Group, Christchurch 1965; One-man Exhibition: Ikon Gallery, Auckland 1965 (with Merlene Young). Lives in Auckland.*

51 SMALL WAR II  
oil on canvas 23 $\frac{3}{4}$ x35 $\frac{1}{2}$

52 SMALL WAR III  
oil on canvas 23x35 $\frac{1}{2}$

52



## Clive Wilson

*Born Auckland 1940. Studied School of Fine Arts, Auckland 1958-61; Honours in Sculpture 1962.*

*Exhibited: Contemporary New Zealand Painting and Sculpture, A.C.A.G. 1962; Society of Sculptors 1963; Contemporary New Zealand painting, A.C.A.G. 1964. Lives in Auckland.*

53 HARBOUR  
oil on hardboard 30x49

54 HARBOUR EYES  
oil on hardboard 26x20

53





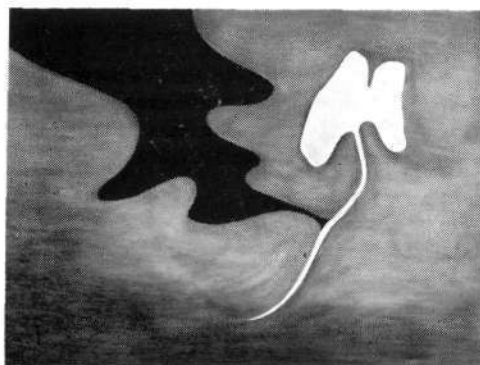
## M. T. Woollaston

*Born Toko, Taranaki 1910. Self-taught except for two terms at Canterbury School of Art 1931. Visited Australia 1958; Europe and America 1962. Exhibited: The Group, Christchurch, annually since 1935; Contemporary N.Z. Painting, A.C.A.G. 1961, 1962, 1963, 1964; Painting from the Pacific, A.C.A.G. 1961; Commonwealth Art Today, London 1962; Retrospective Exhibition (with Colin McCahon) A.C.A.G. 1963; N.Z. Contemporary Painting and Ceramics, Tokyo and South East Asia 1964; Contemporary Painting in N.Z., Commonwealth Institute, London 1965; Commonwealth Art Treasures, London 1965; One-man Exhibitions: Dunedin 1936; Wellington 1948, 1954, 1960, 1964; Nelson 1948, 1961; Melbourne 1958; Sydney 1958; Christchurch 1961, 1962; Auckland, Ikon Gallery 1963; Hayah's Gallery 1964; Barry Lett Galleries 1965. Lives in Greymouth.*

55 ALIX SIMPSON 65/96  
oil on board 28½x21½  
W. Somerville Esq., Westport

56 ALIX SIMPSON 65/106  
oil on board 31½x20½  
W. Somerville Esq., Westport

55



## Merlene Young

*Born Perth, Australia 1941. Studied Wellington Polytechnic. Exhibited: Four Painters' Exhibition, Aritides Gallery, Wellington 1964; Contemporary N.Z. Painting, A.C.A.G. 1964; One-man Exhibitions: Ikon Gallery, Auckland (with Susan Watson) 1964; Aritides Gallery, Wellington 1965. Lives in Auckland.*

57 LES FLEURS DU MAL  
oil on hardboard 48x48

58 LES FLEURS DU MAL  
oil on hardboard 36x48

58